

2019 Annual Report



MISSION STATEMENT

Cornell Cooperative Extension of Chautauqua County puts knowledge to work in pursuit of economic vitality, ecological sustainability and social, well-being. We bring local experience and research based solutions together, helping New York State families and communities thrive in our rapidly changing world.



Cornell Cooperative Extension | **Chautauqua County**

Some of you may recall from just four short years ago, CCE Chautauqua is no stranger to change. In 2015, the organization underwent a great deal of change and restructuring, with a promise and commitment to move forward. 2019, was another year of change, but this years changes are validation of that commitment to diversification, increased offerings and the continuing development of support for Chautauqua County Citizens. Since 2015 we have developed new programs, procured new grants and most recently moved our offices.

Chautauqua County Cornell Cooperative Extension offices are now located at the Jamestown Community College Campus at 525 Falconer Street, in the Katherine Jackson Carnahan Center. This move has increased available meeting space for CCE events, programs and workshops and has increased our accessibility. It has also fostered the development of a new and limitless partnership with Jamestown Community College and we look forward to the many new and upcoming opportunities this will offer.

This year we also established the Southwest New York Dairy, Livestock and Field Crops Team. The formal development of this regional team came to fruition in 2019 after 3-4 years of discussion, brainstorming and development. Regional partners include Erie, Cattaraugus, Allegany and Steuben counties. The team now employs 4 experts in farm business management, field crops, dairy, and livestock.

Our success and growth is a direct result of the wonderful staff and volunteers at CCE. A very special thank you to everyone who helps make and helped shape CCE Chautauqua into what is today.



Emily Reynolds
Executive Director



“Be brave enough to
discover, wise enough to
accept learning and bold
enough to inquire.”

- Emily Reynolds



Agricultural Education

Lisa Kempisty– Educator

The Chautauqua County Agricultural Program offers various educational programs to meet the needs of farm managers, their family members and farm employees. We also support our county's farms through financial management and education. Positively impacting the productivity and profitability of their agricultural businesses and enhancing the county economic development.

Agricultural Educators conducted over 480 individual consultations that allow farms to test ideas for soundness, learn new information about issues they are experiencing, and have access to research based information and staff skills and knowledge.



This year, 4,000 elementary aged students at 25 different locations in Chautauqua County enjoyed hearing a book entitled "On the Farm, At the Market" by G. Brian Karas.



Pasture Walks provided 35 producers an opportunity for hands on, boots on the ground learning.



Visit the Farm day hosted at Frontier Brook Farm educated approximately 475 community residents about Chautauqua County agriculture and highlighted one of our outstanding Chautauqua County Family Farms.



100 members of the public attended "Meat" Your Farmer held at the Falcons Nest last November. Participants were invited to taste locally produced meat products, visit with area farmers to learn more about their farm businesses and ask questions, and learn more about purchasing meat directly from a local farmer.

Master Gardener Volunteer Program

Susanne Bloom– Volunteer Chairperson

Master Gardener volunteers are a key link to helping Cornell Cooperative Extension accomplish its mission, “to enable people to improve their lives and communities through partnerships that put experience and research knowledge to work”, by providing horticultural programs and resources that will educate home gardeners, youth, community gardeners, consumers of horticultural products, and neighbors teaching neighbors.

The Helpline is open annually from March-November and provides approximately 210 responses to garden based inquiries.



“Evenings in the Garden” provided residents with hands on tours of the Master Gardener demonstration garden, exposing residents to onsite research and at home techniques for improving their gardening skills and knowledge.



Vegetables from the Demonstration Garden in excess will be donated to St. Susan's kitchen.



Master Gardener Volunteers in the community contributed over 2,500 hours from 41 different volunteers last year.



Since volunteering is part of us, we offer many opportunities to assist the community, and these include; Snowflake Festival, Grow Jamestown, 4-H Conservation Field Days, Evening in the Garden, Lawson Museum container planters, Chautauqua Fairground plantings in Dunkirk, The Jamestown Audubon Native Gardens and the Lily Dale Butterfly Garden.

Regional Teams

Cornell Vegetable Program

The Cornell Vegetable Program serves a large multi-county region in the western and central parts of the state. The Vegetable Program provides educational programs and information to growers, processors and agri-business professionals, contributing to the viability of farms and the economic wellbeing of New York State.



Lake Erie Regional Grape Program

There are approximately 30,000 acres of vineyard in the Lake Erie region of New York and Pennsylvania grown on 840 farms, making this the largest grape growing region outside of California. The Regional Grape Program is devoted to projects aimed at increasing yields, product quality, diversity and improvement of cultivars, efficiency of production, profitability and adoption of environmentally sound cultural and pest management strategies.



- 261 growers and members of the grape industry attended thirteen Coffee Pot meetings held during the growing season across the Lake Erie grape belt.
- The annual LERGP Twilight Meeting and Erie County Hort Society BBQ was held on July 31 with 250 participants.
- 83% of survey respondents indicated that they saved more than \$80 per year by using resources provided by the Lake Erie Regional Grape Program.

SWNY Dairy, Livestock Field Crops

The SWNY Dairy, Livestock and Field Crops Team serves a 5-county region in the western part of the state. The team's specialists work together with Cornell faculty and Extension educators statewide to provide service to the farms large and small whether dairy, livestock, hay, corn, wheat or soybean focused. The Team was formed in 2019.

Katelyn Walley-Stoll

Farm Business Management and Team Leader
716-640-0522
kaw249@cornell.edu

Josh Putman

Field Crops
517-490-5572
jap473@cornell.edu

Alycia Drwencke

Dairy Management
517-416-0386
amd453@cornell.edu

Amy Barkley

Livestock
716-640-0844
amb544@cornell.edu



Harvest New York

Harvest New York's goal is to expand and enhance Cornell Cooperative Extension's agriculture programs to spur agricultural economic development in New York State.

- Direct assistance provided to 53 farms or other agricultural enterprises. Assistance provided through 415 emails, texts, phone calls, on-site visits, and even a few video conferences to more distant operations.
- 31 projects in various stages of design and implementation, representing almost \$4.7 million of investment in the upstate economy. Almost \$100,000 of additional funds were leveraged from various state, federal, and private grants.
- 12 monthly articles to a readership of almost 650 subscribers.

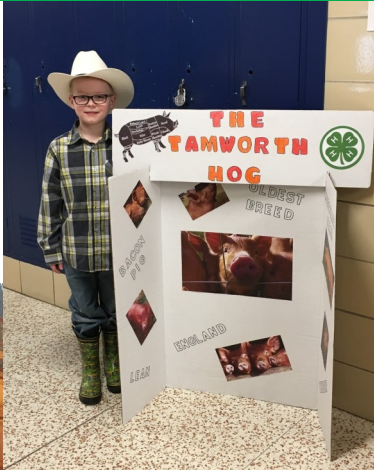


4-H Youth Development

Kate Ewer— Educator

Chautauqua County 4-H enriches the lives of Chautauqua County youth. 4-H youth are makers, doers, and leaders. Within clubs and projects youth complete community service, learn valuable life skills, responsibility, public speaking skills, and more. The Chautauqua County 4-H Youth Development Program connects youth to hands-on learning opportunities that help them grow into competent, caring, contributing members of society.

Youth completed 1,000 life-skills projects and put them on display at the 2019 Chautauqua County Fair.



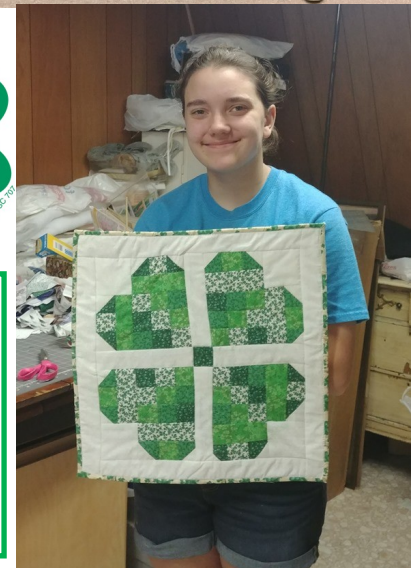
LEAF Junior debuted in May and hosted nearly ten classes reaching an estimated 50 youth through the end of 2019.



Nearly 80 youth gave a public presentation at the annual Public Presentation Contest in March.



Building a Community Legacy Together (BCLT) was piloted in June of 2019 and created bonds between high-school aged youth and adults over the age of 65. The program is slated to expand in 2020 to include seniors and youth outside of Cooperative Extension.



Thanks to funds from Tractor Supply Paper Clover Campaign two youth and two chaperones were able to represent Chautauqua County at 4-H Capital Days for the first time in nearly ten years.

4-H Youth Development

Molly R. Brown— Educator

STORY (Science Technology Opportunities for Rural Youth) is a regional program funded by a 3 year grant from the Ralph Wilson Foundation. This program reaches youth, grades 6-12, who may not be currently involved in 4-H. Youth have the opportunity to learn, discuss and solve a challenge related to Chautauqua County and beyond. 4-H Youth Development STEM activities will captivate the imagination and allow the use of technology and experimentation to identify, research and find solutions to challenges of Chautauqua today.



When working at the Jamestown Boys and Girls club I was discussing a student's future and asked what she wanted to go to college for. She said "I actually didn't know but after working with robots I have discovered I really love robotics and would like to pursue a future in robotics"

Year to date we have reached 71 youth in Chautauqua County.

Last week as I was packing up my items at the Eastside YMCA one of the young ladies said to me "I had a great time with you today. This is so much fun, I am so glad you come here every week to spend time with us".

At the Boys and Girls club in Jamestown I passed out STORY goodie bags containing a shirt, thumb drive, drone and batteries. One of the students looked at me and then gave me a hug. She said "this is the nicest thing I have ever owned and I am so excited"



A parent texted me the other day from the Sherman group "Thank you for being you. Our kids absolutely adore you and I am personally beyond thankful that my daughter had this experience. She has grown and learned so much. You are a big deal!"

EFNEP Expanded Food and Nutrition Education

Heather Gregory and Iris Ruiz– Educators

The Chautauqua County Expanded Food and Nutrition Education Program (EFNEP) addresses critical societal concerns by educating participants about the impacts of healthy nutrition and physical activity behaviors. The program focuses on assisting low-income families, particularly those with young children. The EFNEP program assists income eligible families and youth to improve their health. The program teaches ways to: eat more fruits and vegetables, drink fewer sweetened beverages, maintain a healthy weight, and be physically active. The curriculum can be taught in group or home settings.

My first success was a participant that when I first met her, had just had a wind storm rip the roof off her trailer! The last thing she remembered eating was four days prior to our first visit.... She had a reputation for hating county workers, but somehow got along with me. We had a MASSIVE revelation about the importance of water over sugar sweetened beverages. She lost weight, started running again... eats fruits and veggies every day and now attends a gym where she boxes. AND – she closed on a house a month after she graduated. So much love and pride in me for her!



I had one participant complete three separate programs with me. She graduated and gave birth to a healthy baby girl the very next week. She LOVED cucumber-mint infused water and she and her son both ditched sodas in favor of that.



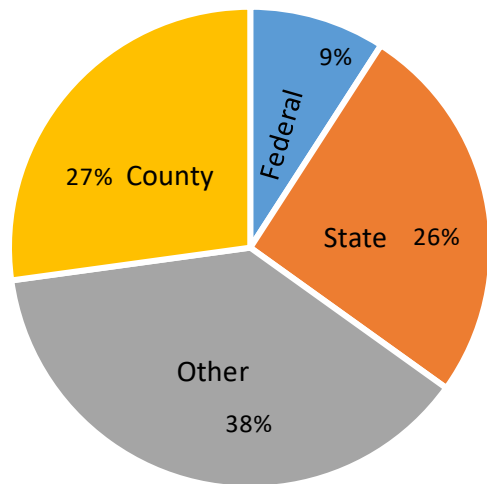
“One little girl started referring to me as “MY Heather” when I came for sessions with her mom. She made breakfast parfaits with us and I got her to trade a bag of mini donuts for my healthy treat another day. She played all the fitness games with me and I will never forget the sound of her giggle!”

“A text that a participant tried something new or looks forward to my coming... Always makes my day.”



One of my highlights was hosting sessions at the County Fair. Just getting to walk participants through the barns and connect them to people who actually can tell them exactly how their food is grown is a success in every way.

2019 Sources of Support



Cornell Cooperative Extension of Chautauqua County
716-664-9502

@ JCC Carnahan Center; 525 Falconer Street; P.O. Box 20; Jamestown, NY 14702-0020
www.cce.cornell.edu/chautauqua

COMMUNITY EDUCATORS



Iris Ruiz
SNAP-Ed, Ext. 217



Molly Howell
SNAP-Ed, Ext. 218



Heather Gregory
Food and Nutrition, Ext. 221



Kate Ewer
4-H Youth Development, Ext. 212

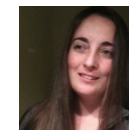


Molly Brown
4-H Youth Development, Ext. 216

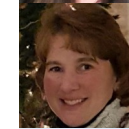


Lisa Kempisty
Agriculture, Ext. 203

ADMINISTRATIVE STAFF



Emily Reynolds
Executive Director, Ext. 201



Darcy Cramer
Finance, Ext. 208



Lucia Conti
Administrative Assistant, Ext. 209



Lisette Cabrera
4-H Administrative Assistant, Ext. 214

