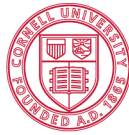


2018 ANNUAL REPORT



Cornell Cooperative Extension Chautauqua County

Cornell Cooperative Extension puts knowledge to work in pursuit of economic vitality, ecological sustainability and social well-being. We bring local experience and research-based solutions together, helping New York State families and communities thrive in our rapidly changing world.



CORNELL COOPERATIVE EXTENSION CHAUTAUQUA COUNTY

NUTRITION

Nutrition Educator Iris Ruiz explains the transformation in a classroom below:

Participants in my classroom, who are learning English in order to find a job, were not trying the new foods that I was bringing into class. For example, the breakfast parfait, when I brought it into the classroom they were saying, "What is that?" and they would only eat the fruit, but not the yogurt. They were also not using their food dollars wisely, many were not making a shopping list and therefore were buying the same foods that they already had at home. Many were running

out of food before the end of the month and some were not providing healthy foods for their family for the month, because of failing to plan ahead. As the class went on, personal growth and confidence started to grow in the participants and as a result there was a positive impact. Before the lessons were completed, participants were trying the different foods that I brought in and indicating they are making positive changes to their lifestyles.

Some of their comments are highlighted here.

"I really like the peanut butter dip, I will make it for my family."

"I am not running back to the store every time I need something for a dish I am making, because I already have it at home, it wasn't on my grocery list."

"I am trying new foods and introducing them to my family."

"I now know the importance of making a grocery list."

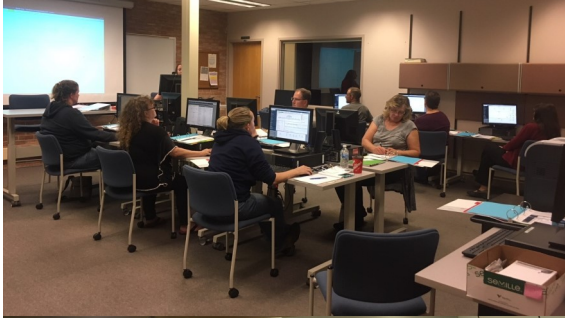
Nutrition

The Chautauqua County Expanded Food and Nutrition Education Program (EFNEP) addresses critical societal concerns by educating participants about the impacts of healthy nutrition and physical activity behaviors. The program focuses on assisting low-income families, particularly those with young children.

"I am not running out of meat before the end of the month, I buy large packets and divide them into freezer bags, I put enough in for a meal."



AGRICULTURE



Agriculture

The Chautauqua County Agricultural Program offers various educational programs to meet the needs of farm managers, their family members and farm employees. We also support our county's farms through financial management and education, which positively impacts the productivity and profitability of their agricultural businesses, and enhances county economic development.



Master Gardeners volunteered **2,767** hours in 2018 and reached **9,052** individuals. That is an estimated economic impact of **\$66,795.38**

Cornell Cooperative Extension
Chautauqua County

Basics of a CSA

Learn.
Empower.
Achieve.
Farm.

#LEAFlive!
2.22.18 @ noon

Made by Kristin Whiteford, January 2018. LEAF is a certified program of the Chautauqua Region Community Foundation. CC of Chautauqua is a community based organization, affiliated with Cornell University, Chautauqua County Government, and NY State government, and the local business community. For more information on LEAF, please contact us at 716.833.6200 or visit our website at www.chautauquafoundation.org. Community Foundation of Chautauqua County, Inc. is a 501(c)(3) nonprofit organization.

Economic Impact of \$260,000 from the LEAF Program: including workshops, consultations, resource development, and community support, through improved management practices, agribusiness creation, expansion of homesteads, and diversification of current farm operations into new farm markets; with a total reach of 985 community members.

AGRICULTURE



Dairy Profit Teams:

These meetings provide dairy farm family members, farm employees, and the farm's agribusiness advisors a facilitated discussion of the dairy farm business. Chautauqua County farm families have improved communications, resulting in improved management of their dairy herd and replacements, through increased milk production, improved herd health, improved calf and heifer health and growth, and decreased production costs.



Farm Safety:

The Extension Risk Management grant provided an opportunity for educational meetings including Commercial Driver's License requirements and truck safety on the farm and over roadways, farm pre-disaster education and preparedness, barn fire and structure collapse prevention, minimizing storm damage, coping with power outages, and maintaining continuity of farm operations during community disasters, reducing criminal activity and stored chemical risk, enhancing livestock handling and biosecurity, and insurance programs for forage and pasture to manage risks of growing forages.



Over 600 consultations with farmers, homesteaders, and community members on farm business management, beginning farm business, agribusiness support, technical assistance, best management practices, local food access, and much, much more!



Beef Quality Assurance:

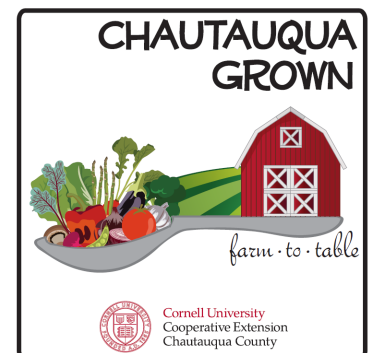
Beef Quality Assurance (BQA) is a national program that provides training in food safety, proper cattle handling techniques, handling of animal health products, injection sites, and record keeping. Producers in Chautauqua County were provided on-farm presentations, hands-on learning activities and demonstrations on cattle management topics.



\$161 million

The total market value of agricultural products sold in the county, making it the county's largest industry.

Farm Business Management Educator Katelyn Walley-Stoll completed a Master's Degree in Adult Learning from SUNY Empire with a Capstone Project focused on the LEAF Program and Extension Outreach, she also became a Produce Safety Alliance Certified trainer, an Annie's Project Trainer, and brought in six grants for our Farm Business Management Programming.



4-H YOUTH DEVELOPMENT

Youth Development

The Chautauqua County 4-H Youth Development Program connects youth to hands-on learning opportunities that help them grow into competent, caring, contributing members of society.

New York State 4-H Vision:

A world in which youth and adults, learn, grow, and work together as catalysts for positive change.

1,000 youth engaged in one-time 4-H programming at Conservation Field Days. Area fifth graders explored a variety of conservation careers and hobbies at the Lake Chautauqua Lutheran Center this past May.



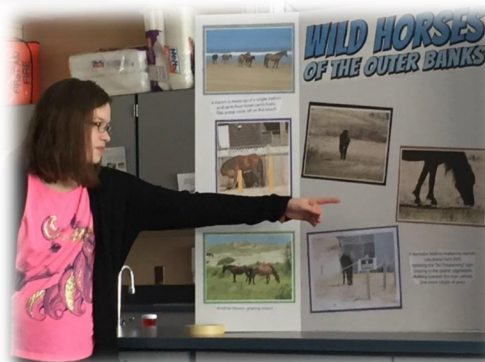
300 youth put their best on display at the Chautauqua County Fair. Youth exhibited over 1,000 projects in the 4-H Building and filled the barns with beef cattle, dairy cattle, goats, horses, poultry, rabbits, sheep, and swine.



The 4-H Green Tie Affair raised \$24,000 to support 4-H programming in 2018. Thank you donors, sponsors, and volunteers!



The Dairybud program for 4-Hers aged 5-8 with an interest in dairy programming had a successful year with the introduction of the Big Buddy program. Older 4-H youth in the dairy project helped their Dairybud learn more about the dairy project and helped them show their calf at the Fair.



325 youth participated in yearlong 4-H programming and developed important life skills like record keeping, working as a team, the importance of community service and—most importantly—that learning is fun!

REGIONAL PROGRAMS



This past June, Harvest New York Specialist Anika Zuber conducted a workshop at Castelli America in Ashville, NY. The facility in Ashville is the only Castelli facility in the United States, and they produce mozzarella and ricotta products. At the workshop, 9 Castelli America employees were trained on new Food and Drug Administration Food Safety requirements. The training was broken down into 2 separate 2-hour sessions to help employees understand critical changes in regulations that were required to be implemented this September. Workshops such as this help New York State processors produce the highest quality and safest products possible.

With support from Harvest NY, one local dairy farm with a flat barn parlor retrofit was able to increase their through put at milking time from 30 cows/hr. to ~42 cow/hr. – a 40% increase with no increase in labor. This has also allowed them to more than double their herd size (from 60 to 125 head) but only increase milking time by 50% (2 hours to 3 hours).



LEFT: Vegetable Specialist Elizabeth Buck, discusses the niche cucurbit cultivar trial for evaluation of agronomic characteristics and pest susceptibility. RIGHT: CVP Vegetable Specialist Christy Hoepting explains the results of a swede midge insect management.



Together, the Cornell Vegetable Program made more than 1,025 farm visits and phone/email consultations amounting to 540+ direct contact hours .

On April 12, 2018, members of the Lake Erie Regional Grape Program participated in Governor Cuomo's Concord Grape Summit in Westfield, NY. One of the outcomes of the Summit was the creation of a Vineyard Improvement Program.



NYS Dept of Ag & Markets has provided \$1.25 million over the next 5 years for LERGP and CCE Chautauqua to improve Concord Grape Vineyards throughout the concord grape belt of WNY and PA

Vegetable

The Cornell Vegetable Program provides educational programs and information to growers, processors and agri-business professionals, arming them with the knowledge to profitably produce and market safe and healthful vegetable crops, contributing to the viability of farms and the economic wellbeing of New York State.

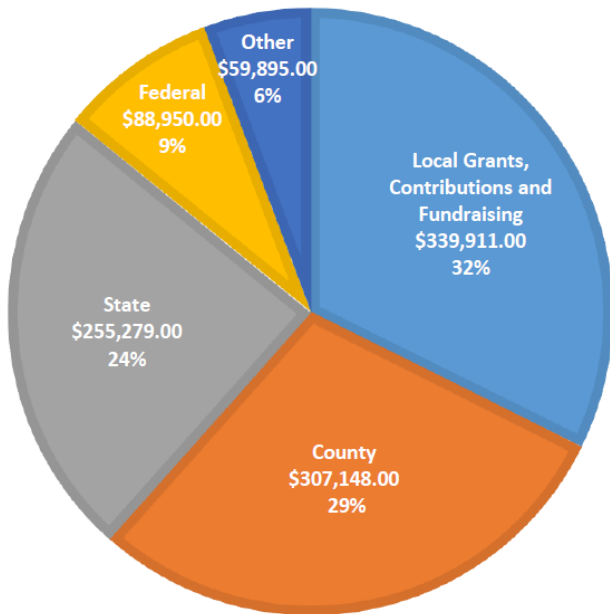
Grape

The Lake Erie Regional Grape Program consists of Extension Educators and research faculty/staff from Cornell University and Penn State University devoted to projects aimed at increasing yields, product quality, diversity and improvement of cultivars, efficiency of production, profitability and adoption of environmentally sound cultural and pest management strategies.

Harvest NY

Harvest New York's goal is to expand and enhance Cornell Cooperative Extension's regional agriculture programs to spur agricultural economic development in New York State. The team began in 2012 in Western New York, expanded into Northern New York in 2016, and now extends into New York City to better serve all of New York.

**CCE Chautauqua County
Estimated Sources of Support**



* other sources of income includes, but is not limited to program participation.

**2018 CORNELL COOPERATIVE EXTENSION
OF CHAUTAUQUA COUNTY
BOARD OF DIRECTORS**

- Sarah Nickerson: President
- Breeanne Agett: Vice President
- Tom Hockran: Secretary
- Jeff O'Brien: Treasurer & 4-H Youth Development Representative
- Tim Black: Member-At-Large
- Andy Joy: Member-At-Large
- Dr. Paul Holley: Member-At-Large
- Max Martin: Member-At-Large
- Shelly Wells: Member-At-Large
- Jeff Miller: Agricultural Representative
- Sara Moss: Agricultural Representative
- Matt Overfield: 4-H Youth Development Representative
- Mark Sullenburger: Master Gardener Volunteer
- John Hemmer: County Legislative Representative
- Elisabeth Rankin: County Legislative Representative
- Dan Heitzenrater: County Executive Representative
- Renee Smith: State Extension Specialist

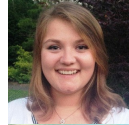
COMMUNITY EDUCATORS



Heather Gregory
Food and Nutrition, Ext. 221



Iris Ruiz
Food and Nutrition, Ext. 217



Kate Ewer
4-H Youth Development, Ext. 212

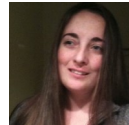


Katelyn Walley-Stoll
Agriculture, Ext. 202

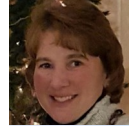


Lisa Kempisty
Agriculture, Ext. 203

ADMINISTRATIVE STAFF



Emily Reynolds
Executive Director, Ext. 201



Darcy Cramer
Finance, Ext. 208



Lucia Conti
Administrative Assistant, Ext. 209



Lisette Cabrera
4-H Administrative Assistant, Ext. 214

**CORNELL COOPERATIVE EXTENSION
OF CHAUTAUQUA COUNTY**

3542 Turner Road; Jamestown, NY 14701
Phone: 716-664-9502
Fax: 716-664-6327

Email: Chautauqua@cornell.edu
Website: www.cce.cornell.edu/chautauqua

REGIONAL OFFICES

Lake Erie Regional Grape Program

716-792-2800

Cornell Vegetable Program

585-394-3977

Harvest New York

607-255-6619