

Cornell Cooperative Extension Chautauqua County



2022 Annual Report

CONNECTING CORNELL UNIVERSITY
to Chautauqua County Since 1913

Table of Contents

Mission Statement	2
Directors Statement	3
Financial Update	3
Program Budget Summary	3
Staff	4
Board of Directors	4
Regional Teams	4
Advisory Committees	4
Youth Development	6 - 8
Nutrition	9 - 11
Master Gardener Volunteers	12 - 13
Agriculture	14 - 18

OUR MISSION

Cornell Cooperative Extension puts knowledge to work in pursuit of economic vitality, ecological sustainability and social well-being. We bring local experience and research-based solutions together, helping New York State families and communities thrive in our rapidly changing world.



Cornell Cooperative Extension | Chautauqua County

525 Falconer Street; P.O. Box 20

@JCC Carnahan Center

Jamestown, NY 14702-0020

t. 716 664-9502

f. 716 664-6327

e. chautauqua@cornell.edu

<http://cce.cornell.edu/chautauqua>



Directors Statement



Each year I take the development of this Annual Report as a time to reflect on the progress the organization has made over the year and throughout my time with Extension. As I look over the changes and accomplishments I am forever grateful for the opportunity to be part of such a meaningful organization. I am amazed as the partnerships, comradery and commitment from our volunteers, staff, colleagues and friends of CCE. 2021-2022 saw many changes, as has become a repeating theme in Extension and the world. In 2022, we welcomed five new staff members and promoted another to a new position. You will see new staff highlighted throughout this report as we welcomed, Shannon Rinow into a new Master Gardener Volunteer Coordinator position, Cassandra Skal into a new Agriculture Coordinator



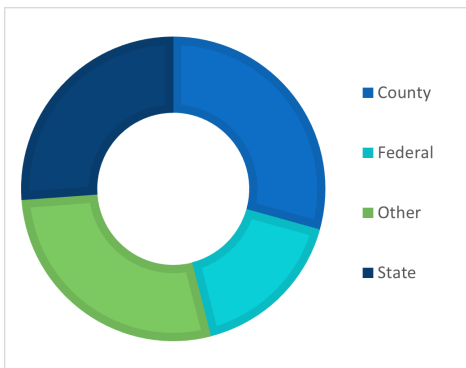
position, Elizabeth Mc-Elwain into a new EFNEP nutrition educator role in Dunkirk, Wendy Alexander was hired as the Jamestown Nutrition Educator, and Lindsey Crisanti was hired as the 4-H educator and Lisette Cabrera was promoted to the new 4-H coordinator position. We also had to say best wishes to both Kate Ewer and Heather Gregory who each moved on to new positions outside of our organization. In 2022 we were blessed with increase support from New York State, a new partnership with Erie2Chautauqua BOCES in a farm to school grant collaboration, and support for our producers through the County Legislature from the American Rescue Plan Act. We also welcomed the LEAF series back into full operation offering 11 workshops, a FarmNEt Webinar series, Narcan training for all staff and are currently planning for a November 2022 Agriculture Forum. I am also excited to announce that eh Chautauqua County Legislature has dedicated \$15,000 to

agri-tourism support through CCE Chautauqua in 2023.

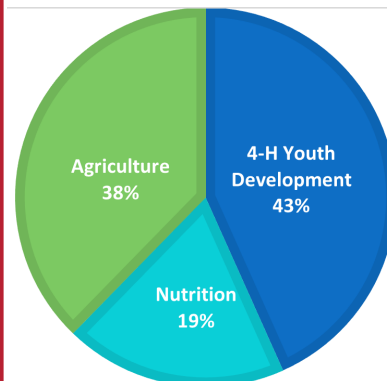
From agriculture, to nutrition, to youth development; CCE continues to change and improve because of our wonderful supporters, friends, volunteers, staff and partners. Thank you for helping make 2022 an exceptional year at CCE Chautauqua.

EMILY REYNOLDS
Executive Director

ESTIMATE OF SUPPORT



PROGRAM BUDGETS



2022 Total
Budget
\$1,190,524.45

“Cornell Cooperative Extension is an employer and educator recognized for valuing AA/EEO, Protected Veterans, and Individuals with Disabilities and provides equal program and employment opportunities”



Advisory Committees

4-H YOUTH DEVELOPMENT

Brittany Begier
Betty Catanese
Fred DeGoiler
Mary Jantzi
Linda Jarvis
Joe Osborne
Emily 'Beth' Southworth
Kimberly Witherow

AGRICULTURE

Ron Almeter
Kaitlyn Bentley
Jessica Brehm
Rosemary Joy
Jeff Miller
Ben Nickerson
Michael Wilson
Derek Yeric

Staff

ADMINISTRATORS

EMILY REYNOLDS
Executive Director
DARCY CRAMER
Finance Administrator
LUCY CONTI
Administrative Assistant

AGRICULTURE DEPARTMENT

LISA KEMPISTY
Dairy and Livestock Community Educator
SHANNON RINOW
Master Gardener Coordinator
CASSANDRA SKAL
Agriculture Program Coordinator

4-H DEPARTMENT

LINDSEY CRISANTI
4-H Community Educator
LISETTE CABRERA
4-H Program Coordinator
MOLLY BROWN
4-H Community Educator

NUTRITION DEPARTMENT

MOLLY HOWELL
SNAP Education Community Educator
MARY RYDER
SNAP Education Community Educator
WENDY ALEXANDER
EFNEP Community Educator
ELIZABETH MCELWAIN
EFNEP Community Educator

Cornell Regional Teams

VEGETABLE TEAM

Elizabeth Buck
Robert Hadad
Christy Hoepting
Julie Kikkert
Margie Lund
Judson Reid

SOUTHWEST NEW YORK DAIRY, LIVESTOCK, & FIELD CROPS TEAM

Amy Barkley
Camilla Lange
Katelyn Miller
Katelyn Walley-Stoll

LAKE ERIE REGIONAL GRAPE PROGRAM

Jennifer Phillips-Russo
Kevin Martin

Board of Directors

SHELLY WELLS

President

RON ALMETER

Vice President
Agricultural Representative

KIM WITHEROW

Treasurer, 4-H Representative

GEORGE HAFFENDEN

Secretary

RENEE MOONEYHAN

Extension Specialist

SUZANNE FASSET-WRIGHT

Board Member At Large

CHAD BUCK

Board Member At Large

ALYSSA PORTER

Board Member At Large

ANNA EMKE-WALKER

Board Member At Large

PAT WALKER

Board Member At Large

DAN HEITZENRATER

Board Member At Large

JOE OSBORNE

4-H Representative

CAMILLE ROSADO

Board Member At Large

JEFF MILLER

Agricultural Representative

DINAH HOVEY

Master Gardener Representative

DAN PAVLOCK

County Legislator

JOHN HEMMER

County Legislator



CCE Chautauqua

Agriculture

“The Chautauqua Grown program is important to the community because it really helps producers and consumers connect. Chautauqua Grown is an online platform that has listings of all local producers and is continuously growing. I have heard from producers that there has been an increase in sales and it has been credited to Chautauqua Grown as the consumer mentioned it at the time of sale! I am so proud to be a part of facilitating that! In 2023 I am going to launch a Chautauqua Grown Facebook page to help share Chautauqua Grown farm updates in one location to help foster this trend.” more from Cassandra Skal and other CCE Agriculture staff on pages 14– 18.



Master Gardeners

The Master Gardener program plays an integral role in our community. Master Gardeners are trained using a horticulture curriculum through Cornell and volunteer their time doing a variety of service projects locally. Educating our youth and families on growing healthy foods and contributing to food security and access in Chautauqua County is one of the goals of the program. This is done through public outreach and hands-on at our community garden, where Master Gardeners discuss methods for growing vegetables, seed starting and offer taste testing during harvest time. Monthly “Evening in the Garden” family events offer free information sessions on a variety of horticulture topics. More from Shannon Rinow and Master Gardener volunteers on 12– 13.

Youth Development

“The 4-H Building at the Chautauqua County Fair is important to the community because it provides an opportunity for all community Fair attendees to see what 4-H can teach. County clubs display the projects their youth have produced throughout the year. This helps to educate the public that 4-H has more to offer than animal projects for youth that may not have the ability to participate with an animal.” More from Lisette Cabrera and other 4-H youth development staff on pages 6-8



Nutrition

“SNAP-Ed NY teaches people how to shop for and cook healthy meals on a limited budget. Our goal is to give you the tools, tips, and tricks to help you make nutritious food choices and choose a physically active lifestyle. SNAP-Ed works to help make the healthy choice the easy choice for our communities.” More from Mary Ryder and other CCE Nutrition staff on pages 9-11.



Youth Development: 4-H

4-H youth development connects youth to hands-on programming that will shape them into competent, caring, contributing members of society.



In this county we have a huge issue with poverty, being homeless, and drug problems. Teaching our youth at a young age to become responsible, confident, independent, resilient, and compassionate is crucial to the future of our community. Through our programming youth learn more than just "raising animals". These youth learn life skills like civic engagement, how to become a homesteader, how to work with others, and even how to speak in front of the public. Another reason it is so important to our community is that we are very volunteer based. We have some volunteers who are just members of our community, but a lot are parents of the youth. This gives the parents more hands-on time with their children and really brings on a positive impact on family relationships.



- ### 2022 Impacts
- 213 Public school youth reached through 4-H Special Interest Programming
 - 2222 youth reached through Ag in the classroom 's Ag Literacy Program
 - 118 youth participated in 4-H programming at Camp Onyahsa
 - 282 youth participants in CHQ Public Libraries Oceans of Possibilities
 - 200 youth reached through Public School Summer programming
 - 800 participants at Chautauqua Institution
 - 239 youth enrolled in yearly 4-H programing
 - 135 enrolled volunteers
 - 2 youth completed Tractor Safety
 - 36 youth participated in County-Level Public Presentations



My favorite CCE program is the 4-H Youth Development Program because it is a program that makes a difference in the lives of Chautauqua County youth. - John Hemmer, CCE Board Member and Legislative Representative

Youth Development: 4-H

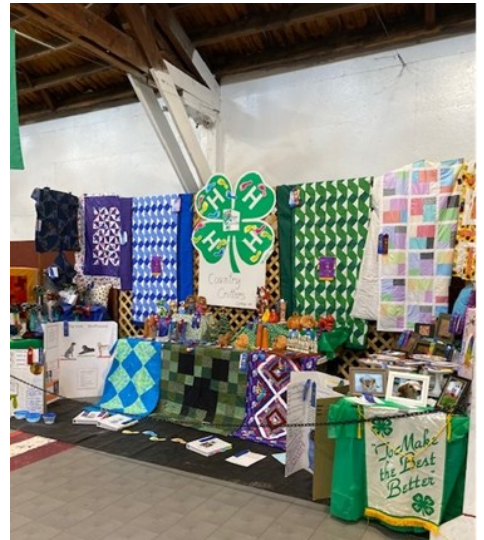
Favorite Moments of 2022



“My favorite moment from 2022 was at our class 4-H Sewing Machine 101. I was able to help teach the youth but the best part was when I heard a parent telling another parent how much she appreciates what 4-H has done to help her daughter “come out of her shell” and really “open up”. It was nice to hear the side conversation and how 4-H has benefited both families. - Lisette Cabrera

“My favorite moment from 2022 program was helping 2nd grade at Temple Elementary build bat boxes. The sense of comradery, accomplishment and joy was one of the best moments of my career. The kids felt a sense of pride they hadn't felt before and I felt privileged to be a part of it.” - Molly Brown

“My favorite part of this year's programing was fair week. This was my first fair as a 4-H educator, and it really was not anything I was expecting. However, it was so nice getting to learn (most) kids' names, intermingle with the parents, and watch all these youth come together to help each other and our 4-H organization all while having fun and making life-long memories. The craziest thing to me is that these parents have taken up all their vacation time just for their kids to be able to be part of the fair. The sacrifices these families make and do it without remorse is truly incredible. I also loved hearing all the parents and grandparents talk about back when they were in 4-H too!” - Lindsey Crisanti

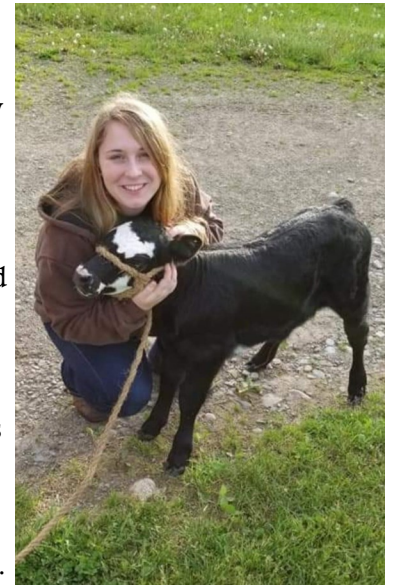


The 4-H STORY program is important to the community because it brings non-traditional 4-H curriculum to communities, youth and programs that do not normally participate in traditional 4-H programming.

- Molly Brown 4-H Educator

Youth Development: 4-H

Lindsey Crisanti joined our team this year as the lead 4-H Educator. She is doing a great job, learning the programs and policies. She is looking forward to everything in 2023 because she is starting to know the program and has so many ideas to hopefully make improvements. She says, "I am sure to fail in some cases, but I am hoping to see this County's program succeed." She is looking forward to Conservation Field Days in the spring, community 4-H club growth, boosting community outreach, and the newly structure department working together as a whole to improve/bring back LEAF Jr. workshops. She is excited about 2023 because she feels a bit more prepared for the fair, and state fair. She also looks forward to bringing back a shooting sports program and how to have 4-H dairy youth involved in the Meat Animal Sale selling dairy baskets. She says she most looks forward to "a new year"!



Lisette has been with CCE for many years in an administrative role and this year has moved into a program coordinator role using her knowledge, expertise and experience to help support our community clubs and grow programming opportunities. In 2023 she is most looking forward to 4-H Presentation Day. She says "This is a great program for youth to participate in that provides lasting benefits. We are making some adjustments to improve the event overall and attract more youth to participate."

Molly Brown has been on our team for 4 years under a grant from The Ralph Wilson Foundation. This year with an increase from the Chautauqua County Legislature we were able to keep Molly in as a special interest educator working with youth in our more urban areas. In 2023 Molly is looking forward to offering 'Bird Sleuths', a curriculum from Cornell's Lab of Ornithology into the community. She believes, "it will be an incredible opportunity to perform citizen science experiments and report back to Cornell's Lab of Ornithology."



It is inspiring to watch youth develop through the 4-H program. Over my 15 years with extension I have had the privilege to watch several youth come to our programming as young members, gain independence and feel a sense of belonging that allows them to develop into caring and compassionate adults. I have seen lasting friendships that help each other through some of life's toughest events and I have even seen relationships develop into marriages. 4-H may seem like it is about learning new skills and trades but its actually about learning who you are, standing up for what you believe in, developing a network of support and becoming the best version of yourself.

- Emily Reynolds, CCE Executive Director

Nutrition: EFNEP

The Expanded Food and Nutrition Education Program helps income-eligible families eat more healthfully and save money at the grocery store.



Wendy Alexander joined our team this year as the EFNEP Nutrition Educator in Jamestown. Wendy believes “EFNEP and nutrition education is important to our community because it teaches people about food safety, food management and how to incorporate nutritious food and physical activity into their lives.”

As she has completed her trainings and began teaching Wendy days her favorite moment of 2022 was completing her training and being able to share her knowledge with others! She enjoys seeing kids get excited about trying a smoothie with spinach and their expressions when they thought they wouldn't like it and they loved it!

We are pleased to have Wendy on the team, She is excited for 2023 because she feels she now has a “better handle on my

position, and I will be able to get people excited about their health and wellness!”



EFNEP reaches participants with research based curriculum for youth and adults including:

Family and Nutrition Education Curriculum, Healthy Cents, Finding a Balance (Diabetes), Teen Cuisine, and Choose Health, Food, Fun and Fitness. It is easy to participate in EFNEP, our educators reach out through:

Home visits – meeting families/individual family members in their homes to teach nutrition, food safety, smarter shopping strategies, and increase physical activities.

Groups – partnering with agencies to improve the nutrition, fitness, and food management resources of their clients.

Youth – Working with classrooms to teach nutrition and basic cooking skills to youth.

Elizabeth McElwain joined our team in 2022 as a nutrition educator for EFNEP in the Dunkirk office. Liz reflects on her time her and says, “Through my time in EFNEP I have seen how important it is to the community. One way I have seen this is through the excitement that participants have when they learn about new recipes and how small healthy changes can make a huge difference. This is a vital part of how EFNEP helps the community make changes that improve health.

My favorite part of the 2022 program year was being able to get into the community and learn about the resources. By learning about the community, I was able and starting new partnerships with EFNEP and various community programs.

I am very excited to be able to continue developing our community partnerships this coming year and I cannot wait to see what new groups and events we can organize for the community.” We are pleased to have Liz on our team and expand our programming into the northern parts of Chautauqua County again.



Taking EFNEP classes helped me save money at the grocery store. I learned to make a shopping list before I went to the store so I bought only the food I needed for the week.” - former EFNEP graduating participant

Nutrition: SNAP-Ed

SNAP-Ed NY teaches people how to shop for and cook healthy meals on a limited budget. Our goal is to give you the tools, tips, and tricks to help you make nutritious food choices and choose a physically active lifestyle. SNAP-Ed works to help make the healthy choice the easy choice for our communities.



Favorite Moments of 2022

“The time I spent meeting new people and making amazing new contacts for programming this year and for years to come. I loved the time I spent with the kids of our community, having the opportunity to work with them and teach them new life skills, skills they will take with them as they grow.” - Mary Ryder

“My favorite moment from 2022 program was all the summer programming I provided for: Ring School, Love School, Sherman School, Lincoln School, and Clymer School. It was a very busy summer, but so rewarding!” - Molly Harvey



Nutrition Education: Using a hands-on, interactive teaching style, we offer classes on a variety of topics: healthy eating on a budget, smart shopping for vegetables and fruit, healthy meal planning, basic cooking and food safety skills, and weight control and physical activity. Our teams will work with you to design programs for youth, adults, and/or seniors, and will come directly to your agency. Programs can last anywhere from 20 minutes to 90 minutes and may include a food demonstration.



“SNAP-Ed NY is important to the community because I give individuals and families the tools to eat healthy on a budget, and they always get to try something they may have never tried before with the food demonstrations I provide.” - Molly Harvey

Nutrition: SNAP-Ed

2023 is going to be a great year. Mary and Molly are both looking forward to all the new sites they will be lucky enough to be doing programming at and continuing with current partners. Mary is especially excited about working with a home school group that she will be working with and Molly says she always looks forward to Conservation Field Days. Conservation Field Days is hosted by CCE's 4-H youth development program and annually hosts fifth grade students in an outdoor venue teaching about conservation and career opportunities. Molly especially enjoys teaching the kids a fun heart rate activity with the large parachute outside! Inside or out the SNAP-Education program is exciting and impactful.



2022 IMPACTS

In the timeframe of October 1, 2021- September 20, 2022, the SNAP-Ed Chautauqua region educators have provided community members with evidence-based nutrition education programs for a total of

302 sessions

276 hours of programming

3,172 participants reached

7,339 residents reached through indirect activities (i.e. newsletters, community events)

SNAP-Ed region (Allegany, Cattaraugus and Chautauqua) educators have completed a total of:

448 sessions

395 hours of programming

4,615 participants reached

The region has also adopted 20 changes through the PSE (Policy, Systems, and Environmental) work.

As a board member I appreciate the diversity of programming offered by CCE and enjoy the opportunity to bring health knowledge and awareness to assist in the collaboration with new and existing partners. - Shelly Wells, CCE Board of Directors president.

Master Gardener Volunteers



The Master Gardener Volunteers provide horticultural programs and resources that educate home gardeners, youth, community gardeners, consumers of horticultural products, and neighbors teaching neighbors.



This year CCE welcomed Shannon Rinow to the staff as the Master Gardener Coordinator. Shannon's position is shared between Chautauqua and Cattaraugus counties. Shannon is working with both counties. This Annual Report focuses on just her work in Chautauqua County. CCE Master Gardener volunteers continue to offer high quality low cost programming to resident of Chautauqua County. You may have met a Master Gardener volunteer at a local farmers market, one of our events, or by stopping in or calling the Master Gardener Hotline.



This year Master Gardener Volunteers Pat Martonis, Susanne Bloom, Janet Forbes,



Deborah McAndrews, Emilie Gifford, Connie Dutcher participated in a new Partnership with Cassadaga Job Corp to host a garden club. The goal of this project was to enable and encourage the students to grow their own vegetables. Cassadaga Job Corp converted a breakfast nook into a growing station with grow lights and heating mats to facilitate seed starting. Topics taught included garden planning, soil health, planting, caring for your garden and harvesting.

Shannon also participated in the Master Food Preservation program through Cornell Cooperative Extension in Saratoga County. This was one of her highlights from 2022. As a result, she has been involved in hands-on,



education classes and workshops around canning and safe preservation methods. Shannon is looking forward to offering and participating in more community



outreach. Food preservation and gardening go together because it contributes to self-sufficiency and promotion of growing your own food while eliminating environmental waste.

Master Gardener Volunteers



Weekly from May– October, as shown in the photo to the left taken by Master Gardener Volunteer, Peg Hite, certified Master Gardeners answer questions in person, on the phone and by email from residents in Chautauqua County. Shown her MG Volunteers Andy McLean & and Judy Thies work at the Help Desk. Volunteers answer questions about pollinators, garden pests, plants varieties, plant diseases and much more. Have a gardening question? Call the Master Gardeners!



We asked Shannon Rinow what she is most looking forward to in the upcoming year. Here is her response, “I am looking forward to a lot of programming that will occur in 2023. One program in particular that I am excited about is in the area of school and community gardens. The Master Gardener’s community garden has some exciting changes on the horizon. We are currently located near the tennis court at Jamestown Community College. Our new garden location will remain at JCC, however, will be outside the Cornell Cooperative Extension building. We have a committee that will be involved with planning and will contribute to great new learning space.” Her enthusiasm continued with more plans for 2023. “A couple Master Gardeners and I are taking a class later this Winter “Planning a Successful School and Community Garden”. We are partnering with local schools that are implementing school gardens, under a Farm 2 School grant, we are excited expand our reach to youth in the classroom.”



2022 Impacts

- 106 questions answered through the Help desk
- 54 people attended Evening in the Garden programming
- \$1,148 raised at the plant sale fundraiser
- 23 Chautauqua Institution gardens highlighted
- 453 adults toured Chautauqua Institution gardens
- 352 children and 140 adults participated in the Chautauqua Institution school gardens
- 25 youth participated in the Job Corps Garden Club
- 36 adults and children participated in local library Trowel Talks
- 749 people reached at community and local gardens
- 506 hours dedicated to teaching horticulture-related topics in the community
- 228 hours dedicated to sharing research-based gardening advice with residents
- 257 hours devoted to continuing education



I think everyone should know that CCE Chautauqua is a place to learn from several fields and encouragement to share this knowledge with the community. I enjoy this immensely. - Pat Martonis, CCE Master Gardener Volunteer

Agriculture

Our CCE Agriculture Program provides requested information and educational opportunities to local agricultural producers, landowners, and residents. We assist by providing research-based resources to help improve the productivity and profitability of our local agricultural businesses. We also work to help the public better understand the importance of agriculture in Chautauqua County.

Favorite Moments of 2022

“My favorite program moment from 2022 would probably be my LEAF (Learn. Empower. Achieve. Farm.) workshop about Seed Saving. This workshop was not originally on the slate for the Fall Season but I had to cancel a workshop due to low registration. I took this opportunity to capitalize on the situation and create a new class that I had heard chatter about from the community and one of my co-workers. I did some intense online research, reached out to many different people, and finally found Brenda Snyder. She started the Seed Library at the Audubon. Since that, she moved to Tennessee, so I had to get creative! I hosted the workshop here at JCC, converted a classroom into a fancy seed swap and harvesting location! I had about 12 participants and they had a BLAST! Brenda was present via zoom and we talked about seeds all night and then tore apart pumpkins, sunflowers, and other vegetables and flowers. At the end, all of the participants shared seeds that they brought with them to share. It was extremely rewarding to be able to quickly put this workshop together, work out all the inconveniences, and to watch the participants have a wonderful time!” - Cassandra Skal



Our local Agricultural program reaches producers in a variety of ways, Some of which include:

- Beef Quality Assurance Training
- Learn. Empower. Achieve. Farm (LEAF)
- On-Farm Pasture Walks
- On-site farm meetings
- One-on-one consultations
- Sheep & Goat FAMACHA Workshops



HIGHLIGHTED PROGRAM

The LEAF (Learn. Empower. Achieve. Farm)

In 2022 this program offering received new life with the hiring of Cassandra Skal as the Agriculture program coordinator.

LEAF is one program area she is managing. LEAF programming is important to the community because it is an affordable and efficient way for local community members to come and learn a new skill that is agriculture backed and could foster a new opportunity for entrepreneurship, networking, and success. To learn about upcoming classes, please visit our [website](#).



The CCE agriculture teams provide cutting edge research and education to Chautauqua County's 1,228 farms, operating on 223,634 acres with a total market value of \$639,035,000 (land, equipment, machinery) and generates annually over \$161 million/year for the local economy according to the USDA 2017 Ag Census. The county's investment in supporting agriculture through CCE represents only 0.07% of the value of the county's ag industry per year... a small investment to ensure the growth and profitability of the food industry that is vital to put food on resident's tables but is also an important economic engine in the county!

The CCE Chautauqua program I am proudest to partner with is Visit the Farm Day. Getting our citizenry onto the farm is absolutely critical to facilitate an understanding of why and how farmers do what they do.

- Tim Bigham, New York State Farm Bureau

Agriculture

This year we welcomed Cassandra Skal as an Agriculture program coordinator with a focus and emphasis on LEAF, Chautauqua Grown, Food Preservation, and Ag program support. We are excited to have Cassie as part of our team. In 2023 she is looking forward to meeting more of the Chautauqua Grown producers. She has only had the opportunity to meet a few so far and is really “striving to meet all of them (or at least most of them) personally and tour their farms in spring/early summer.” She is looking forward to connecting with each one and learning about their production, how CCE can support them, and what struggles they might be facing. She is also looking forward to growing the Chautauqua Grown registry with new producers that are just getting started and learning how CCE can help support them in their new adventure.



2022 IMPACTS

39 participants in five LEAF (Learn. Empower. Achieve. Farm.) workshops offered in September and October.

[Visit the LEAF website by clicking here](#)

60 community members connected with 14 farms at the “Meat” Your Farmer event

77 Farms are featured on Chautauqua Grown

[Visit the Chautauqua Grown Website by clicking here](#)

500 visitors participated in the “2022 Visit the Farm Day”

\$39,353 in American Rescue Plan grant funds were awarded to 5 farms to improve their agricultural businesses



It's virtually impossible to pick a favorite extension program because everything the extension engages in has value and yields meaningful, substantive outcomes... so there are no lesser programs or loss leaders in terms of value. But if I must choose first among equals, I cast my vote for the cornerstone of our food supply system – the extension's agricultural specialists program. Insofar as the regional teams construct has become so pervasive in the State's extension system, I view the Ag program as the combined resources and services of the regional teams that Chautauqua County participates in as well as our endogenous county ag program specialists. The technical education and field consulting service, along with agribusiness management skills training, provided by these teams provide the largest sector of our regional economy with a knowledge sharing and practical skills training to compete effectively in the global food supply marketplace. Chautauqua County farmers face stiff competition and a complex regulatory environment in trying to remain economically viable and environmentally sustainable. The Extension's ag program is a resource accessible to food producers at every level in the farming community to help farmers achieve economically viable output from the diverse farming enterprises that comprise our farming community. The program specialist provide science-based best practices and actionable recommendations to producers at every size and expertise level across a broad spectrum of crop and livestock production operations. This broad outreach strategy ensures that the resources of the extension system are accessible to everyone in our county engaged in, or seeking to become an agricultural producer. The extension's ag team members also serve in a vital, but less recognized role, as spotters and first responders to food safety, environmental and health hazards that may emerge at the field and farm level of our food supply system. This too is a vital role in protecting and sustaining the food supply system that comprises the largest sector of our regional economy. -Ron Almeter, Vice President CCE Board of Directors

Agriculture: CVP



The Cornell Vegetable Program is one of the premier regional agricultural teams in NYS: a Cornell Cooperative Extension partnership between Cornell University and the CCE Associations in a large multi-county region in the western and central parts of the state. The team's Vegetable Specialists work together with Cornell faculty and Extension Educators statewide to address the issues that impact the commercial vegetable industry.

The county's investment to ensure a strong agriculture and food system represents a 13x ROI, not including the value of fringe and overhead by the University. Including this, the value of the program is \$2.7M or a ROI of 23x.

Recent studies reveal a rapidly changing economic reality for New York farmers. Potassium and phosphorus fertilizer indices nearly doubled over the last year, and nitrogen, in some cases, tripled! Analysts predict that farmers will continue to face much higher fertilizer prices in the coming season, as higher natural gas prices further increase the cost of nitrogen. However, ongoing research by the Cornell Vegetable Program contributes to farm sustainability by reducing reliance on shipped-in nitrogen and decreasing input costs. We recently completed a project that included on-farm research for both winter nitrogen fertilizer rates for greens crops such as spinach, plus cover cropping in rotation with warm season tomato crops in high tunnels.

In year 1, we saw little variation in foliar nitrogen across foliar samples from spinach. According to anecdotal observations from the growers, spinach receiving lower nitrogen treatments performed better earlier in the season. However, by late February, spinach with lower nitrogen grew poorly and turned yellow. In the second season of research, we found that 130 and 200 lbs N/ac were the highest yielding treatments. Our research demonstrated row cover increases cover crop biomass, without the need for additional heat inputs. We also found that early planting date combined with row cover led to higher nitrogen scavenging/fixation. The highest estimated contribution in our trials was 102 lbs/acre. With a Cornell Vegetable Guidelines recommend rate of 125-150 lbs of N/ac, our project demonstrated tremendous potential to reduce fertilizer input costs!

71%
reported a greater understanding of how winter cover crops can be used in high tunnels.

90%
reported an improvement in their operation associated with adoption.

Of those that adopted cover crops,
92%
report planting in the fall or winter.

Of those that have implemented cover crops, We estimate our work created a new gross savings of up to
\$89,7601
per year for these reporting farms.

The total potential industry impact in New York = **\$564,311.55** per year.



The Chautauqua County Soil and Water Conservation District partners with Cornell Cooperative Extension of Chautauqua County to provide valuable outreach to both producers in the County as well as the general public. It is through this partnership that we can utilize our local resources in both our entities to truly make a difference for Chautauqua County producers. - Cassie Pinkoski, CCE partner

Agriculture: SWNYDLFC

The Southwest New York Dairy, Livestock and Field Crops Program with Cornell Cooperative Extension offers educational programming and research based information to agricultural producers, growers, and agribusinesses in the five county region of Southwestern New York.



The SWNYDLFC team has provided outstanding programming throughout 2022 in a variety of formats, One program we are highlighting here is the work done by the team's livestock specialist Amy Barkley. Amy partnered with Nancy Glazier to lead state-wide communication efforts on Highly Pathogenic Avian Influenza (HPAI) as part of Cornell's Extension Disaster Education Network (Cornell-EDEN) response. This effort has reached numerous producers, farm businesses, farm service providers, and the general public across the state through webinars, media interviews, and the creation of original CCE resources. These resources have also been picked up and shared through our amazing team of CCE educators at the county level.

One outreach item of note was the March 7th webinar co-hosted by Ag and Markets and CCE on the current outbreaks of Highly Pathogenic Avian Influenza, the threat it posed to NYS poultry production, and how we can protect our birds and stop the spread. The program saw 546 registrants from across the state, with 330 individuals joining live and 160 watching the recording. Over 200 questions came in during the webinar and through the post-webinar survey that were answered by Amy, Nancy, and other specialists across the state. While the threat of the outbreak has not passed and is likely to continue through next spring, Amy is working with the DART Team and Nancy Glazier to provide webinars, press release, and resources to help keep our state's poultry populations safe.

In November of 2021 and April of 2022, Amy partnered with Lisa Kempisty at CCE Chautauqua to host two workshops on meat processing and marketing options. These workshops came at a critical time, where USDA and Custom Exempt slaughter slots were even more difficult to come by than they are today, with abattoirs having waitlists that were tens of farms long and slots filling up a year in advance. The workshops provided education to 26 farmers and were filled with practical questions and discussion that focused on getting animals to slaughter in a timely manner and how to legally market meats that were processed using the various options available.

A year after that first workshop, we were excited to learn that one of the Chautauqua County farmers who attended the training used the resources provided to take the plunge and build a 20C kitchen strictly for the purpose of processing livestock. The farmer connected with our statewide NYS Ag and Markets contact, Cory Skier, to design the facility, which allows them to bring in USDA inspected carcasses from their local processor to cut and wrap on site and sell directly to customers. The kitchen and dedicated farmer are now able to provide a desperately needed service to their community, while also getting the peace of mind that they will always be able to get their animals processed in a timely manner. This facility is one of the first of its kind in the region, and we're really excited to see what the future holds for this farmer and others who decide to move forward with building these kinds of facilities.

2022

**BY THE
NUMBERS**

4,821

Event and program direct participants who've attended one of our 65 events/ collaborations or have received our direct email/ mail updates.

1,480

Farm Consultations on topics related to Farm Business Management, Field Crops, Dairy Management, and Livestock Production.

473

Website submissions, press releases, interviews, and Facebook posts providing timely information to a large audience.

"It's great to have a close connection to campus research as well as local scouting and in-season updates. I like to read Katelyn's articles because I can actually understand them and they're more relevant to our operation than the national publications.

Keep up the good work and keep those winter webinars!"

- SWNYDLFC Farmer

Agriculture: LERGP



The Lake Erie Regional Grape Program consists of Extension Educators and research faculty/staff from Cornell University and Penn State University devoted to projects aimed at increasing yields, product quality, diversity and improvement of cultivars, efficiency of production, profitability and adoption of environmentally sound cultural and pest management strategies.

By participating in regional agriculture teams, Chautauqua County is able to access the expertise and resources of all 11 regional teams in the Extension System and more effectively access the rich faculty and program resources of Cornell University and the entire National Land Grant System to benefit Chautauqua County growers and ultimately, all residents of the county.

Vineyard Improvement Program

The Vineyard Improvement Program has been in effect for over 4 ½ years and was originally intended to wrap up on March 31, 2023. It was set in motion as a result of the Concord Grape Summit in April 2018 when it was proposed that the New York State Department of Agriculture and Markets would fund the removal of unwanted Concord vineyards in order to replant grape varieties or other agricultural crops. This \$1.35 million commitment by New York State which is funded by the Southern Tier Agricultural Industry Enhancement Program, aims to strengthen the grape industry by encouraging the elimination of abandoned Concord vineyards which are a reservoir of disease and insect pests, and establishing healthy agricultural crops, be it Concord, other grape varieties or another agricultural commodity.



BEFORE

During these past 4 ½ years there have been 37 applicants, 21 of these projects have been completed and the applicants reimbursed or are in the process of being reimbursed.

These 21 projects account for almost 260 acres of Concord vineyard that have been removed and replanted. To date the applicants have been reimbursed a total of \$343,149.03.



AFTER

Podcast Report



Between the Vines was born out of the need to distribute research-based information to growers during a pandemic. With a focus on timely information the podcast lives on and people keep listening. As of the end of the third quarter we have had over 1,800 listeners. IN the first quarter alone there were 850 downloads and 259 video blog views. For the last 12 months we've had just over 2,200 listeners. There seems to be a direct correlation between the frequency of the speaker and the popularity of the episode. Our listeners like to hear new and different things and guests are our best source of new and different. In 2022 a variety of guests have been interviewed and number of staff have made appearances during our podcasts. This is not only a great way to showcase innovative ideas and opportunities but also helps growers meet and connect with industry experts.

Chautauqua County's investment of \$113K in CCE's dairy, livestock, field crops, vegetable and grape teams, leverage \$1.47M in extension and applied agriculture research programs critical to the success of progressive farms in Chautauqua County. In partnership with Cornell and other counties, we are able to deploy 18 highly skilled specialists in the areas of dairy, livestock, field crops, vegetable, grape and ag business management.

"I appreciate the wealth of resources Cornell Cooperative Extension of Chautauqua County brings to the community"

- Pat Walker, CCE Board Member

- STAY CONNECTED-



[CCE Chautauqua](#)



[cce_chautauqua](#)



[CCE Chautauqua](#)

Website: <http://chautauqua.cce.cornell.edu/>