

Chautauqua County

2024



2025

Dog Project Handbook



Welcome To The 4-H Dog Program



The general philosophy of the 4-H Dog Program is not the training of dogs, but rather the training of young people. The dog is used as a medium for this training. In the process of working with your pet, you will be met with challenges, responsibilities, successes and failures; which will help you grow and mature as a person. We hope to have all 4-H members who participate in the Dog Program encounter an enjoyable learning experience. Working with a dog can be an extremely rewarding opportunity, as well as a life long skill. Being able to relate to a dog is a wonderful part of a persons life. We as committee members of the 4-H Dog Program hope to assist in providing the most fulfilling and enjoyable program possible. Our leaders find it personally rewarding working with the 4-H youth and it is our hope that they feel the same. Please feel free to contact any committee member or the 4-H Office with any questions.

Good Luck To You and Your Dog!
- 4-H Dog Committee Members

2024-2025 4-H DOG COMMITTEE

Chautauqua County 4-H Office
@ JCC Carnahan Center

525 Falconer St., PO Box 20, Jamestown, NY 14702-0020 Phone:
716-664-9502 ext. 212 Fax: 716-664-6327

Roxanne Young
Chair
6825 Route 474
Panama, NY 14767
716-338-5292

Michelle Kuns
Vice Chair
44 Douglas St.
Fredonia, NY 14063
716-680-4354

Taylor Young
Secretary
6825 Route 474
Panama, NY 14767
716-237-0087

Matthew Brown
44 Douglas St
Fredonia, NY 14063
716-679-0292

Jeanette Almekinder
2456 Mina French Creek Rd
Clymer, NY 14724
716-456-1197

Katrina Jones
4 Robbin Hill Rd
Frewsburg, NY 14738
716-450-2850

Jack Jones II
4 Robbin Hill Rd
Frewsburg, NY 14738
716-499-1107

ENROLLING IN THE DOG PROJECT

All 4-H Members, ages 8-19 as of January 1st of the project year, or Cloverbuds, ages 5-7, are eligible to participate in the Dog Project. 4-H Members enroll in the Program by completing the sign-up sheet, loosely named the “Dog Information Sheet”, officially the “**4-H Dog Program, 4-H Member Information Sheet**”.

Dog Program Members who plan to Show a Dog.

All Dog Project members with dogs must complete the Acknowledgement of Risk Form, provide and maintain updated vaccination records (Rabies, Distemper/Parvo, and Bordetella aka Kennel Cough), and apply for a Show Number by January 31st. All rules and regulations, forms, fees, dates, and deadlines stated in the Dog Project Handbook apply to all dog project members.

To complete the Dog Project, members must attend three Dog Project/Education Classes, obtain 5 of the required credits, and complete, at a minimum, the “Dog Record Form”, pp. 1 thru 4, along with a written ‘Dog Story’ of your 4-H experience, preferably a complete Dog Project Book (due Sept 15th, — no later than September 30th, or if it falls on a weekend, the previous Friday), along with the “Dog Credit Requirement Check List”.

To show a Dog, members’ must be under the supervision of a 4-H Dog Trainer. It is required that members attend a minimum of 9 training sessions. Members are responsible to sign in when attending training classes. The “Application for Dog Show Number” and “A Successful 4-H Dog Project”, due May 1st, should be discussed and reviewed by the trainer to ensure the member is in the appropriate class level and any other factors have been considered.

Dog Program Members who do not plan to train and/or show a dog.

All Dog Project members must complete the Acknowledgement of Risk Form, whether or not they plan to show or train, understanding and accepting the risk of being around dogs. All rules and regulations, forms, fees, dates, and deadlines stated in the Dog Project Handbook apply to all dog project members, with the exception of the “Application for Dog Show Number”, that is only required if members are showing a dog.

Bringing a dog to any 4-H event, even just once, for a parade, demonstration, puppy class, etc., requires that the member provide updated vaccination records (Rabies, Distemper/Parvo, and Bordetella aka Kennel Cough), and have them on file at the 4-H Office.

To complete the Dog Project, members must attend three Dog Project/Education Classes, obtain 5 of the required credits, and complete, at a minimum, the Dog Record Form, pp. 1 and 4, along with a written story or report of your 4-H experience, preferably a complete Dog Project Book (due Sept 15th, or if it falls on a weekend, the following Monday), along with the “Dog Credit Requirement Check List”.

Cloverbud Policy

This policy applies to all children, ages 5-7 working with animals in the 4-H. This is in addition to New York State 4-H Cloverbud policies, which apply to Cloverbud in all 4-H programs.

Cloverbuds will learn:

- The ability to approach dogs without startling it.
- The ability to identify safety hazards such as unsafe areas or animal behaviors that indicate an animal is fearful.
- The ability to respond safely to unpredictable animal behavior.
- The Cloverbud may share the responsibility for care of an animal because they involve measuring, physical activity, and stimulate immediate positive responses from the animal that students can enjoy and remember.
- Exhibition for Cloverbuds can be designed by providing safe, trained and well-socialized dogs that children can handle without risk of injury to the child or the dog.
- One to one assistance for all participants is also required.
- Children can handle animals in an enclosed show ring or pen with a competent adult or older, experienced junior leader within a safe distance to maintain control of the animal.
- Cloverbuds can learn to follow directions and attempt to set animals in position and practice giving simple commands or navigating obstacles.

ELIGIBILITY TO RE-ENROLL THE FOLLOWING YEAR

1. Once enrolled in the Dog Program, members cannot abandon the program after April 1st. Leaving the program after that date without completing the full requirements of the project may make the member ineligible to participate the following year.
2. Attend a minimum of three Dog Project/Education Classes
3. Have a minimum of five credits as required
4. Turn in, at a minimum, a completed Dog Record Form, Credit Sheet, and Dog Story/Report of 4-H Experience, or a full Dog Project Book, **NO LATER THAN THE FINAL DUE DATE of Sept 30th**, or earlier if the date falls on the weekend.

4-H MEMBER CODE OF CONDUCT

Standards of expected behavior are established by the 4-H Youth Development Program Committee and will be shared by Cornell Cooperative Extension staff, volunteers, or chaperones with all youth participating in 4-H events. These behaviors are expected of all youth while participating in 4-H events and activities. Leaders and/or Chaperones at any 4-H event will be enforcing the code. All enrolled 4-H members will receive and sign-off on the 4-H Code of Conduct.

Expected Behavior:

All participants are to refrain from disruptive use of social media, email, text, or IM. It is acknowledged by the Chautauqua County 4-H that social media may be used to promote, encourage, and display county pride and club/program unity. It is also a good way to communicate club/program news and notes. Chautauqua County 4-H also acknowledges that social media can be used in disruptive and destructive ways such as, but not limited to, bullying, taunting, intimidation, and slander. Use of social media in these ways, including but not limited to posting or distributing literature or material containing a threat of violence, injury or harm, slanderous accusations or depicting violent actions against members, volunteers or staff is strictly prohibited.

All participants are expected to be responsive to the reasonable requests of the adult in charge at the time given.

All participants are expected to participate in all of the planned programs, to be on time and follow through on assigned tasks/responsibilities in a manner that ensures the safety, well-being, and quality of the educational experience for self and others.

All participants will act in a mature, responsible manner, recognizing they are role models for others and are representing themselves and the County 4-H Youth Development Program.

All participants will be dressed appropriately for the event. Dress will depend on the event. Information given prior to the event will state the type of clothing that is appropriate.

All participants will be considerate and courteous of all youth and adults and their property.

All participants will respect the rights and opinions of others realizing the strengths of diversity

All participants are to refrain from the possession and/or use of illegal drugs, tobacco products, or alcoholic beverages, firearms and/or other weapons at all times. These are prohibited.

All participants are to refrain from excessive romantic displays, sexual activities, harassment and hazing either in public or private situations. These actions will not be tolerated.

**Regarding disciplinary action, a witness must submit a written and signed statement of the incident to the 4-H Issue Leader within 10 days of knowledge of the issue, before action will be taken by the 4-H Office or 4-H Youth Development Program Committee.

Consequences Any of the following may be used, depending on severity of the situation. Each severe case will be reviewed by the 4-H Issue Leader and 4-H Youth Development Program Committee.

In mild cases, a warning will be given (written or verbal).

Able to remain at event but possibly barred from a future event.

Loss of awards and/or premiums if applicable.

Sent home from event at family's expense, followed by a Review Board consisting of individual(s), 4-H Youth Development Program Committee members and the individual's parents/guardians.

VIOLENCE OR EXTREME BEHAVIOR OF 4-H MEMBERS

If a 4-H Member is engaged in a "PROHIBITED" behavior (see #7 of 4-H Member Code of Conduct) they will be immediately suspended from the 4-H Program and the act will be reviewed by the 4-H Youth Development Issue Leader. Based on the severity of the situation, the 4-H member may be permanently dismissed from the 4-H Program and legal authorities may be called. The 4-H Youth Development Program Committee will make a final decision on 4-H Membership based on their review of the situation.

RELEASING 4-H MEMBERS FROM 4-H PROJECT or PROGRAM

Membership Is Not Permanent - Must Remain In Good Standing - It costs a considerable amount in public funds and much time and effort to serve a 4-H member. With rapid expansion of program and extension of youth programs to new audiences, it is increasingly important not to waste time and money on those who are interfering in any way with the progress of the over all educational program.

Canceling of Membership - This shall be decided by the 4-H Issue Leader and 4-H Youth Development Program Committee and carried out by the Cornell Cooperative Extension Issue Leader (For more details see 4-H Policy Manual).

Rules & Regulations for the Dog Program

1. All dogs must be at least six (6) months old by the first show.
2. Members are permitted to attend any 4-H training class in any designated training area; however members must establish one primary training area to ensure the proper supervision over their dog project.
3. Shows are held rain or shine!
4. All youth (showing a dog) must show at least one (1) year in obedience.
5. All youth will adhere to the 4-H dress code at all 4-H events. (See page 9)
6. All 4-H Shows will follow the NYS 4-H Dog Show Dress Code (found in the 4-H Dog Show Handbook).
7. **NO RUNNING! Spectators at shows need to keep a reasonable distance away from the show ring (10 ft. or more if possible).**
8. **All youth and dogs are the parents' (guardians') responsibility during shows, training sessions, and programs. Do not let either run loose to bother other participants. Please control your children and dogs during shows! These distractions can cause a loss of concentration of the member and dog showing, making it frustrating for them. Please be considerate.**
9. No dogs in season are allowed on the grounds for shows or any 4-H program. However, youth are encouraged to attend training sessions or shows to gain knowledge and continue to practice with their dog at home.
10. Limping or injured dogs may be excused at the discretion of the judge or the trainer.
11. Abuse of an animal will NOT be tolerated during classes, shows, or any 4-H program. This includes kicking, hitting, or slamming a dog to the ground to make it obey. The Dog Advisory Committee considers this abusive behavior and it will be dealt with according to the 4-H Code of Conduct (signed at the time of 4-H Member Annual Enrollment).
12. Any dog known to bite another dog or person must not be brought to the Chautauqua County Fair or the New York State Fair. Any dog that attacks or appears dangerous to other dogs (growling) may be excused by trainers or committee members.

Your 4-H Dog Project Book

Individual project books are binders that are only devoted to one project such as an animal project (sheep, dog, horse, etc.) or any other 4-H approved project such as photography or sewing. **Members can only submit one individual project notebook for judging.**

1. There are many reasons for making and keeping a continuous record book of your 4-H experiences. Here are just a few:
2. To recall many of your interesting activities and accomplishments.
3. To verify your achievements and compare your work from year to year.
4. To show how you have changed and grown through your 4-H involvement.
5. To organize and record your 4-H project work experiences and accomplishments, so that you may apply for a special award or use your 4-H information for obtaining a job, enrolling in a college, or other educational programs.

How To Organize Your 4-H Dog Project Book

The following guidelines will help you organize all the 4-H dog materials that you have collected over a period of years and highlight your 4-H experiences.

1. Your record book should be attractive, interesting and special to you. This will mean the style of each member's book may vary but the statistical and factual record will still be included in your own book.
2. The book should be loose-leaf so those pages can be added or removed. Plastic page holders are neat and make this easy. It should be very durable, in a binder that holds pages securely, rather than in a notebook. It need not be expensive.
3. Neatness is important. Remember, this book should tell people about you! You will also refer back to it months and years later. So be orderly, thorough and selective in the way you assemble it. Use permanent tape, staples, or some form of fasteners that will last through the years.
4. **The binder** must have a creative, colorful front cover containing the member's name, the project's name and the year. Neatness and creativity are important.
5. **The first page inside is called the cover page.** It needs to include the member's name, project name, club or lone member status and the year. It serves the same function as a title page in a book. It is similar to the outer cover, should be neat and have "eye" appeal/creativity.
6. **The second page is a Summary page.** This is simply a neatly typed or printed list of all activities that the member has participated in during the project year. It needs to be in chronological order from first activity to last activity.

7. **The next pages** are all devoted to documenting the project. They should include dog credit form, any activity sheets, information and photos or pictures that would show what the member has learned during the project. All of these pages should be also in chronological order. Project record sheets at the club level must be signed by the club leader. Photos, when possible, should be included and they MUST be captioned. Captioning should explain in words what the photo shows. Captions are generally descriptive sentences rather than just one word. There are times when one word is an appropriate caption but, again, it needs to capture the essence of the photo.
8. **Date** pages, photographs, ribbons or newspaper articles.
9. **Underline or highlight** your name in articles, on programs, or in newsletters so your part is obvious. **Label or identify** every item included. Do not include the whole newspaper, just the article that pertains to you. Add pictures with captions of you and your dog if you have them.
10. **Project record sheets** need to be included and as complete as possible. Many animal project record sheets/books cannot be totally completed until after County Fair but **ALL projects**, animal and others, should have as complete a record as possible. For example, in animal projects, feed records should be complete other than July as well as all other expenses, etc. Any thank you notes should also be included.
11. Any **awards, certificates, and ribbons** can be put into the binder following the records. Ribbons should be secured (double sided tape?) into the binder without the string. Ribbons should not be sticking out of the binder. Everything should be neatly labeled. If including news articles, highlight your name so your part is obvious.
12. **A personal story about the project must be included.** Personal stories are narratives that describe the member's "journey" through the project. They are written in paragraph form and will be judged for age appropriateness. For example, an older teen will be expected to write much more than a nine year old. No personal stories should be longer than two sides of a piece of paper. Stories should be neatly written or typed, easily read and understood, and be mechanically correct (punctuation, capital letters, etc.).
13. Items with multiple pages should be securely attached but accessible for reading.
14. Specific suggestions of things to consider including each year are:
 - Project record sheets, dog story, dog score sheets, newspaper articles and pictures. Your records are the most important part of the book and the basic reason for doing it in the first place. They should be completely filled out, up-to date, and have your name on it.
 - Demonstrations given– include brief description with award information.
 - Leadership activities within the dog program: to help younger members, non competitive demonstrations, talks, service activities performed, etc.

15. Each year, activities should be stored in record book in chronological order with present year first, and dividers or tabs between years. Try to keep a similar arrangement or style from year to year. Try for compactness, but do not crowd. Generally use no more than one page to an event. Often several related items will blend nicely on a page.
16. The current years work will be judged. For consideration for County medals and Jr. awards, the entire book will be judged.
17. Remember this is your work as a 4-H'er. Do the best that you can in organizing your own record book. "Building Experience", the 4-H motto certainly pertains to your 4-H Dog Record Book.
18. For County Fair—If you choose to submit your Record Book to be judged at the County Fair it must be completed through the current project year, entered on your voucher in June, to be judged in July. It is recommended that you include place cards for upcoming events. Following County Fair your Record will be returned for you to complete your records through September 30.

***Dog Record Form and/or Dog Project Books are DUE TO THE 4-H OFFICE ON OR BEFORE SEPTEMBER 15TH (or the Friday before if the 15th falls on a weekend) to receive a blue on your project book. No project books will be accepted after September 30th.**

Suggestions For Leaders and Parents

Developing the record-keeping habit is a job worthy of a leader's continued emphasis. If you don't set aside time to supervise, somehow the records never get kept; so schedule it into your project year right from the start. A top-notch 4-H member can miss awards because the records are lost and can lose incentive because they can't see how much they have grown. Every member can be motivated toward excellence by a visible and growing record of achievement.

Help your members get started, but let each book be unique and satisfying to the member. Emphasize neat, complete records. Do your part to ensure that project records and achievement certificates are available, completed and signed as they are earned. It earns a worthwhile premium and it is a motivation for getting the book completed each year.

Check List For Your 4-H Project Record Book

The following list is what the Dog Committee will be looking for when choosing participants for special end of the year awards.

- _____ 1. Notebook is sturdy and in loose-leaf form.
- _____ 2. Outside: should have at least your name and that it is your dog project book on it. You may decorate it as you wish.
- _____ 3. First Page: your name, project name, your Club's name, your age, dog's name, dog's age, and year in dog program.
- _____ 4. Second Page: Summary Page with all your 4-H experiences for the current year on it.
- _____ 5. Next Pages: Include any activity sheets, information and photos or picture that would show what the member has learned during the project. All of these pages should be also in chronological order. Project record sheets at the club level must be signed by the club leader.
- _____ 6. Next Pages: Dog Credit Form, Information About My Dog Record Form, these are in the back of your dog handbook (not your entry form)
- _____ 7. Copies of your thank-you cards.
- _____ 8. Any **awards, certificates, and ribbons** can be put into the binder following the records.
- _____ 9. Next is your Dog Story.
- _____ 10. If this is your second year or more in the Dog Program, please put all this information in the front of the book and previous years behind it with a good divider sheet between years.
- _____ 11. Neatness counts! Make your book as neat and easy to read as possible.
- _____ 12. Did you do all of the work yourself?
- _____ 13. Congratulations, you now have a 4-H Project book you can be proud of!

An evaluation sheet similar to this check list will be used at the County Fair.

4-H Dog Trainers

Defined: Dog Trainers are Dog Project Leaders. Dog Project Leaders can be trainers, educators, or specific project leaders.

All Dog Trainers must be enrolled as a 4-H Volunteer, sign and acknowledge the 4-H Code of Conduct, and follow the guidelines set by the 4-H Dog Advisory Committee.

All new Dog Trainers must have had some training experiences in the field of dog obedience and are subject to approval by the 4-H Dog Advisory Committee.

The goal for trainers' is to promote the mission of the 4-H Dog Program which is not to train the dog, but rather train young people; the dog is used as a medium for this training. The trainers' additional objective is to encourage and train up new trainers, including youth or junior trainers.

Guidelines, subject to annual review:

1. Trainers must maintain an attendance sheet (provided by the Dog Committee), where the youth are responsible to sign in at each training session, and turn the sheet in to the Dog Committee.
2. Trainers need to verify and collect vaccination records from members participating in their training area, (as Dog Committee receives records, updates will be sent to Trainers FYI).
3. Trainers need to evaluate, discuss, and assign members and dogs to the most appropriate show class, when completing the Application for Show Number (due January 31st)
4. Trainers need to encourage County Level participation in Dog Program Activities.
5. Trainers should not exceed a "youth to trainer" ratio of 8 to 1 at any training class.
6. Trainers need to have an incident report available in the case of an incident or accident.
7. Trainers need to attend one "Trainers' Forum" per year as scheduled by the Dog Committee, to promote consistency around the county. Potential future trainers and youth trainers are encouraged to attend and offer input. Trainers can review guidelines, list needs and make suggestions for the Dog Committee to take under advisement to improve the Program.
8. Trainers may offer special classes in addition to the regular training, i.e. puppy class, winter agility, grooming, herding, AKC Canine Good Citizenship training, etc., all subject to the oversight and approval of the Dog Committee as the Committee deems necessary.
9. All youth participating in training must be enrolled in 4-H, and enrolled in the Dog Project by January 31st. New dog program members are welcome to join training classes up until March 1st.
10. Members are permitted to attend any 4-H training class in any designated training area; however members must establish one primary training area to ensure the proper supervision over their dog project.

SHOW - Class Placement and Class Advancement

Show class options are based on the State Dog Program Guidelines available at Cornell EDU <http://www.ansci.cornell.edu/4H/dogs/index.html>, County Rules, and recommendations of the trainer. Both the dog's and the member's previous experience (together or separately) is relevant to placement. Further criteria, (including AKC involvement), is addressed in the Dog Show Handbook.

An exhibitor may enter more than one dog in the show; only one dog in the grooming and handling category; for all other shows, exhibitors may only enter one dog per class, except for Rally Obedience & Agility where exhibitors may enter two dogs in the same class.

In general, dog show exhibitors (dog teams, i.e. youth and dog) or simply dogs that won a blue ribbon in a county show last year MUST move up to the next level this year, in obedience, agility and rally-obedience. If a trainer feels the move is not in the best interest of the youth, exceptions may be made, but they will not be eligible to qualify for State Fair. Grooming and handling advancement is based on receiving a blue ribbon at State Fair (not the County).

Example of Obedience Class Advancement: Having received a blue ribbon in Class 1- Beginners A Obedience, the dog and member MUST move up to Class 3- Graduate Beginners A Obedience.

Class 2- Beginners B Obedience is for teams that did not receive a blue ribbon in Class 1- Beg A Obed; or for experienced exhibitors that are beginning with a new dog (which has not previously shown).

Dog show exhibitors (dog teams) may skip a class level (where applicable); this class advancement is made with the approval from the supervising 4-H Dog Trainer, and Dog Committee review.

Example: If both exhibitor and their dog received blue ribbons in Beginners Obedience, and feel they are both ready for the Novice Obedience class, advancement can be made with approval.

The dog's experience in Obedience sets the minimum criteria for placement in agility, four person team, and brace. Dog's must be at the Graduate Beginner's A or B level in order to show in the State Fair Classes of Agility (off lead), Four Person Team (off lead), and Brace (off lead). Note: When sharing a dog for any purpose including brace, the criteria is based on the dog's obedience class, not the particular exhibitor's experience.

Dogs that are passed on to brothers or sisters, or borrowed, or where ownership is transferred from another/ previous member, must continue on from that level of training, based on State Dog Program Guidelines and recommendation by the trainer, for obedience, grooming & handling, agility and rally-obedience.

Dog Show Etiquette At the Shows

- Do not talk to the exhibitors/handlers in the show ring
- Keep your voice down when the classes are going on
- Stay clear of the entrances/gates when exhibitors are in the ring
- Do not touch the ring
- Do not enter the show ring unless entering for a class
- Do not play outside the rings and the 4-H grounds: that includes behind the cars and horse rings
- Keep ringtones down on cell phones
- No running permitted on the 4-H show grounds
- Be considerate when setting up for the show-keep 10 feet away from the show rings, give dogs enough room between exhibitors
- Supervise dogs at all times
- Pay attention when your class will be showing and be there on time
- Pick up after your dog and dispose in proper place
- Have proper equipment on your dog when entering the class to prevent delaying the class
- No toys (dog toys or children's toys) permitted out while the show is in session
- Dress appropriately for the shows (refer to handbook for proper dress code)
- Keep your dog under control at all times
- Dogs are to be on a leash at all times outside of the ring
- Remember to take your dog out to go to the bathroom before entering the show ring
- Clapping is ok, but please try not to distract the other dogs in the show ring
- Keep dogs away from snack bar

Dress Code Violations - DO NOT WEAR!!!



Backless Shirt



Visible Underwear



Poorly Placed Logo



Halter Top



Too Short
Shorts or skirts



Visible Midriff



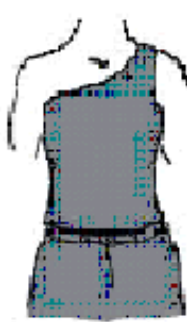
Visible Cleavage



Revealing Pants



Inappropriate Log



One Shoulder top



Tube Top



Visible Undergarmets
"Spaghetti Straps"

Please be advised that the following dress code will be enforced.

1. Clothing: All clothing shall be neat, clean, acceptable in repair and appearance, and shall be worn within the bounds of decency and good taste as appropriate for 4-H events.
2. Articles of clothing which display profanity, products, or slogans which promote tobacco, alcohol, drugs, sex or are in any other way distracting, are prohibited.
3. Excessively baggy or tight clothing, and clothing which advertises gang symbols or affiliation is prohibited.
4. Items of clothing which expose bare midriffs, bare chests, undergarments, or that are transparent (see-through) are prohibited.
5. Shorts and skirts that are shorter then fingertips with arms in relaxed position are prohibited.
6. Tank tops with straps wider then one inch are permitted.

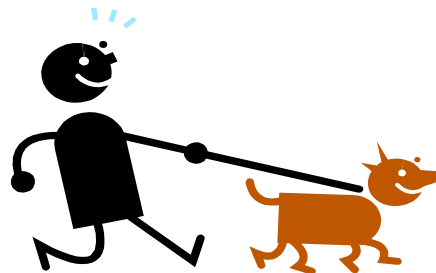
Please be advised that spaghetti straps, shirts which expose a bare back, halter tops, and tube tops are prohibited.

4-H Dog Program Completion Requirements

To complete the 4-H Dog Project, a member must submit his/her completed 4-H record book to the 4-H office by **September 15th but no later than September 30th (or by the Friday before if the date falls on the weekend) of the current project year.** In addition, 4-H Dog Project Members must participate in at least 5 credits of the dog program listed below. **All 4-H projects in the Chautauqua County 4-H Program must be completed by the end of the 4-H year (Sept. 15th or by the Monday after if the date falls on the weekend).** **If the requirements are not met, you are not eligible for year end awards and you may not be able to participate in the project the following year pursuant to the 4-H Policy Manual.**

The Credit Areas are as follows: Each Participant must obtain a minimum of 10 Credits

- 3 County Dog Educational Classes = 1 credit
 - Presentation = 1 credit
 - Shows
 - Grooming & Handling Show = .5 Credit
 - Obedience Show=.5 Credit
 - Rally Show = .5 Credit
 - Agility Show=.5 Credit
 - 4 Person Team=.5 Credit
 - Brace= .5 Credit
 - Teen representative for Dog Committee = 1 credit
 - Participation in a minimum of 9 training sessions with a designated 4-H Dog Program trainer = 1 credit
 - Minimum of 5 hours of community service = 1 credit
 - Public Demonstration (Dog) = .5 credit
 - Public Parade (Dog) = Total of .5 credit er each
 - Pre-approved Dog Related field trip = 1 credit
 - Pre-approved Dog Clinic = 1 credit
 - Volunteer at shows (set-up/tear down) = .5 credit per show
 - At Least Five Thank you notes (dog program related) = 1 credit
 - Sale of 10 items during Nat'l 4-H Week Fundraiser or 2 hours at County Fair Snack Bar = 1 credit
 - Participated in Dog Project Fundraiser = 1 credit
 - 2 or more dog related projects evaluated at county fair evaluation day = 1 credit
 - A complete Dog Project Book = 1 credit
- ** All Dog Participants must obtain 1 credit from County Educational Sessions
*** Extenuating circumstances which may prohibit the member from meeting this 5 credit requirement, must be communicated to the 4-H Dog Advisory Committee and reasonable accommodations will be established on a case-by-case basis.



Year _____

Dog Program Requirements (10 Credits Required)

Name _____

Turn in with the Dog Record Form Sept 15th (or before)

Check Box:

NOTES

	Submitted a Dog Project Book with Record Form & Story	
	Only Completed Dog Record Form & Dog Story	
	Did not complete End of Year requirement	
Enter Number:	(Only enter number of credits for each)	NOTES
	Required 3 Dog Education Classes (Total of 1 Credit)	
	Dog Presentation (Total of 1 Credit)	
	Dog Clinic - Pre-approved (Total of 1 Credit)	
	Super Dog Saturday/Sunday (Total of 2 Credit)	
	Attend a minimum of 9 training sessions before 1st show (Total of 1 Credit)	
	Participated in 4 Show Classes (.5 per show)	
	Teen Rep on Dog Committee (Total of 1 Credit)	
	Entered 2 Dog related projects at County Fair (Total of 1 Credit)	
	Participate in Dog Program Fundraiser (Total of 1 Credit)	
	2hrs at County Fair Snack Bar or Sold 10 items during Nat'l 4-H Week (Total of 1 Credit)	
	Volunteered at 4-H show (Set-up/Tear Down) (Total of .5 Credit per show)	
	5hrs of Community Service (Total of 1 Credit)	
	Demonstration (Total of .5 Credit)	
	Parade (Total of .5 Credit per each)	
	Field Trip (Dog Related) - Pre-approved (Total of 1 Credit)	
	Complete Dog Project Notebook (Total of 1 Credit)	
	At Least 5 Thank You Notes dog program related (Total of 1 Credit)	
	Total Credits (Minimum of 10 Required)	

Member Signature _____ Parent Signature _____

Due January 31st with up-to-date vaccination records.
May be submitted up until March 1st for NEW
MEMBERS. Dog Registration Fees are nonrefundable.

4-H Dog Program 4-H Member Information Sheet

Member Name: _____ Age on Jan 1st _____

Parent/Guardian's Name(s): _____

Address: _____ City _____ Zip _____

Home Phone: _____ Parent Cell _____

Member Cell: _____ Parent Cell _____

Member Email: _____ Parent Email _____

Currently a 4-H Member: Yes _____ Not a Member yet _____ Lone Member _____

4-H Club Name: _____ Trainer (if you have one): _____

Dog's Name: _____ Dog's Color(s): _____ Male _____ Female _____

Dog's Age: _____ Dog's DOB: _____ Dog's Breed: _____ Spayed/Neutered _____

Vaccination EXPIRATION Dates: Rabies _____ Parvo/Distemper _____ Bordetella _____

SECOND Dog's Information:

Dog's Name: _____ Dog's Color(s): _____ Male _____ Female _____

Dog's Age: _____ Dog's DOB: _____ Dog's Breed: _____ Spayed/Neutered _____

Vaccination EXPIRATION Dates: Rabies _____ Parvo/Distemper _____ Bordetella _____

Where did you get your dog(s)? _____ Any special problems? _____

Has your dog had previous training? _____ 4-H _____ AKC _____ Other: _____ With whom? _____

I do not plan to train or show a dog, but wish to participate in the Dog Program. Initial here _____

Signature of Parent indicating you have received the Dog Manuals:

-Office Use Only-

Date Received _____ Payment in the amount of \$ _____ Check # _____ or Cash _____

First Dog:

Vaccination Records: Rabies Exp Date _____ Distemper Exp _____ Bordetella Exp _____

Second Dog:

Vaccination Records: Rabies Exp Date _____ Distemper Exp _____ Bordetella Exp _____

Acknowledgement of Risk Form – 4-H Member and/or Equine Member
This form must be completed to participate in 4-H Clubs/Projects and related activities and/or 4-H Equine clubs and related activities.

This form may be completed during 4-H enrollment for the full program year for 4-H activities and events designated below at the club, county, multiple county, regional, state and national level.

I hereby apply for my child to participate in the 4-H club and/or activity indicated below to be conducted by the designated Cornell Cooperative Extension Association and acknowledge as follows:
I fully understand and acknowledge that there are inherent risks and dangers in my child’s participation in the 4-H club and activities and my child’s participation in said 4-H club and all its activities and use of any equipment related to such activities may result in injury, illness or death and damage to personal property. I understand other participants, accidents, forces of nature or other causes may cause these risk and dangers and I hereby accept these risk and dangers.

My child is in good health and is at or above the minimum age of **5 for Cloverbud members and 8 for regular 4-H members** required to participate in this activity and is able to participate in any strenuous physical activity associated therewith.

Cornell Cooperative Extension of Chautauqua County

DATE(S): 4-H Program Year: October 1, 2024 – September 30, 2025

4-H CLUB EQUINE ACTIVITY:

- Participating in an equine club
- Working with equines beyond club level including clinics, camps, shows
- Working with equines in mounted “over fences” activities. *I (the parent or legal guardian) am aware that my child will be participating in 4-H Horse Program mounted “over fences” activities at Cornell University Cooperative Extension county, multiple county, regional, or state sponsored events. I give my child permission to participate. Mounted “over fences” classes in the NYS 4-H Horse Program could include ground rail, cross rail, and/or other over fences classes and obstacles (this does include trail class). The obstacles will be no higher than 3 foot in any of the 4-H activities.*
- All of the above
- Cloverbud working with equine animal program

4-H CLUB/PROJECT ACTIVITIES (other than Equine):

- All 4-H activities and events for program year
- Working with dogs
- Physical Fitness programs
- Shooting Sports

For Cloverbuds (youth 5-8 years old only):

- Cloverbud activities
- Cloverbud working with animal programs

I have read the above and by signing it I agree it is my intention to have my child participate in the indicated activity and I understand and accept the risks involved.

This shall be binding on my heirs, successors, assigns, administrators and executors. Any claims or disputes arising out of my child’s participation in the activity shall be venued in the Supreme Court of the State of New York of the County where the County Extension office is located.

I am at least twenty-one (21) years of age and I am the legal parent/guardian authorized to sign this document on behalf of the child named herein.

PARTICIPANT’S NAME (print) _____ DATE OF BIRTH: _____

ADDRESS: _____

PARENT GUARDIAN NAME (print): _____

SIGNATURE: _____ DATE: _____

This form must be kept on file until participant reaches age 21.

Revised 8/18



Due January 31st (with updated vaccination records if necessary).
\$30 for 1st dog and \$10 for each additional dog.
Cloverbud fee is \$15. Due March 1st for new members with updated vaccination records.
Complete BOTH SIDES. Complete one application per dog.
If showing Brace, only complete one application.
Dog Registration Fees are non-refundable

Application For Dog Show Number

Member Name: _____ Age on Jan 1st _____

Parent/Guardian's Name(s): _____ Date of Birth _____

Address: _____ City _____ Zip _____

Home Phone: _____ Cell Number _____

Dog's Name: _____ Dog's Color(s): _____ Male ___ Female ___

Dog's Age: _____ Dog's DOB: _____ Dog's Breed: _____ Spayed/Neutered ___

List Dog Project Classes you showed in last year: _____

CIRCLE ONE FOR EACH CLASS YOU WILL BE ENTERING:

OBEDIENCE (all State Fair eligible)

Class 1 – Beginner A	Class 6 – Novice A	Class 11- Open B
Class 2 - Beginner B	Class 7 - Novice B	Class 12 - Utility
Class 3 – Beginner C	Class 8 Advanced Novice	Class 13- Cloverbud
Class 4 – Graduate Beginners A	Class 9 - Graduate Novice	
Class 5 – Graduate Beginners B	Class 10 – Open A	

GROOMING & HANDLING

Class 19 – Open Grooming and Handling Classes (State Fair Eligible)
Open A Jr Open B Jr Open C
Open A Sr Open B Sr.

ADDITIONAL OBEDIENCE CLASSES

Class 14– Brace (State Fair) Name & Breed of 2nd Dog: _____

Class 15 – Beginners Brace (NSF) Name & Breed of 2nd Dog: _____

Class 16 – Four Person Team (State Fair) Class 17 – Beginners Four Person Team (NSF)

Class 18 – Drill Team

RALLY OBEDIENCE (all State Fair eligible)

AGILITY

Class 20A – On Lead Beginners (NSF) Puppy Class	Class 23 – Rally Obedience Novice A (On Lead)
Class 20B – On Lead Beginners (NSF) Pre-Novice	Class 24- Rally Obedience Novice B (On Lead)
Class 21 – OFF Lead Classes (eligible for State Fair)	Class 25 – Rally Intermediate
Division A – Pre-Novice Agility	Class 26– Rally Obedience Advanced (Off Lead)
Division B – Novice Agility	Class 27- Rally Obedience Excellent (Off Lead)
Division C – Open Class Agility	Class 28- Cloverbud
Division D – Excellent Class Agility	
Class 22- Cloverbud	

Signature of Project Leader and Date

-Complete Second Side of Form-

A Successful 4-H Dog Project

Includes first signing up by completing the 4-H Dog Program Member Information Sheet
Turning in a copy of updated vaccination records: "Rabies Certificate", Parvo/Distemper, Bordetella
Noting the Show Dates and the following important deadlines/dates:

**June 13th Vouchers must be submitted and "completed correctly" to show at County Fair

**July 6th Project Judging Day at the Fair Grounds

**July 15th – July 25th County Fair, (plan to sign up to volunteer in the Snack Bar)

**July 22th Pick up Projects from County Fair

**August TBD State Fair Meeting, for eligible & qualified members to attend State Fair

**State Fair Show Dates to be announced

Member Int _____ Parent Int _____

AND...

A willingness to participate in your Club and County program, by complying w/ the following:

I have received both the Dog Project Handbook and Dog Show Handbook, complete with show dates, dress code, credit requirements, and show information.

Member Int _____ Parent Int _____

I have read and understand and will abide by the 4-H Dress Code and the NYS 4-H Dog Show Dress Code, for both the County and State Fair level.

Member Int _____ Parent Int _____

I have read and understand the Mandatory Credit Requirements to complete the Dog Program, and I will make arrangements with the Dog Advisory Committee if I am unable to fulfill a requirement.

Member Int _____ Parent Int _____

I have read and understand that I must attend a minimum of two Dog Project/Education Classes/ Dog Science Classes (.5 credits per class, total required = 1 credit) in order to continue in the 4-H Dog Program.

Member Int _____ Parent Int _____

I have read and understand that, at a minimum, I must submit the four page Dog Record Form w/ Dog Summary to the Ag Center by September 15th but no later than September 30th for my Dog Project to be considered complete, and for me to be eligible to participate next year; and that it is preferred that I complete a Dog Project Book.

Member Int _____ Parent Int _____

I understand that Community Service is the corner stone of the 4-H, and that I should set the best example with my dress, my behavior and overall representation of the 4-H Organization, whether at shows, parades, demonstrations, fundraising, or sending thank you notes.

Member Int _____ Parent Int _____

I read and understand that abuse of an animal will not be tolerated, and will be dealt with according to the 4-H Code of Conduct.

Member Int _____ Parent Int _____

At the time of my initial enrollment or 're-enrollment', I had read and understood the 4-H Code of Conduct which extends to all aspects of the 4-H Organization and that violation could result in discipline up to and including removal from the Dog Project, or the 4-H Organization, entirely.

Member Int _____ Parent Int _____

I will conduct myself with a positive attitude and in the best representation of the 4-H Organization.

Member Print Name _____ Member Signature _____

Parent Print Name _____ Parent Signature _____

Information About My Dog

Dog's Name	Mature weight	Predicted life span	License/tag number	Cost of dog

Veterinary Services Budget

Veterinarian's name	Phone			
	Initial	1 month	1 year	Lifetime
Examinations				
Vaccinations				
Spay/neuter				
Special food				
Medications				
Parasite testing, treatment and control				
Nail trimming				
Teeth cleaning/dental care				
Emergency care				
Euthanasia and/or burial services				
Other				

Grooming Budget

Groomer's Name	Phone			
	Initial	1 month	1 year	Lifetime
Comb and wash				
Coat trim				
Nail trimming				
Teeth cleaning				
Other				

Boarding Budget

Boarding kennel name	Phone			
	Initial	1 month	1 year	Lifetime
Day rate				
Weekly rate				
Special services				
Other				

Training Budget

Trainer's name	Phone			
	Initial	1 month	1 year	Lifetime
Puppy classes				

Obedience classes				
Agility classes				
Special equipment				
Books, videotapes and other educational resources				
Behaviorist				
Other				

Supply Budget

Pet store name				Phone
	Initial	1 month	1 year	Lifetime
Dog food--least expensive cost per serving				
Dog food--medium expensive cost per serving				
Dog food--most expensive cost per serving				
Leash/harness				
Collars				
Toys				
Bed				
Treats				
Brush, comb, grooming supplies				
Bowls				
Other				

Feed/farm store name				Phone
	Initial	1 month	1 year	Lifetime
Dog food-least expensive Cost per serving				
Dog food-medium Cost per serving				
Dog food-expensive Cost per serving				
Leash				
Collars				
Toys				
Bed				
Treats				
Brush, comb				
Bowls				
Dog crate				
Dog House and Kennel				
Fencing				

4H DOG RECORD FORM

Members Name _____

Address _____

Age on January 1st _____ Date of Birth _____ Years in the 4-H Dog Program _____

Name of Parent or Guardian _____

Name of Club or Group _____ Lone Member _____

Name of Dog Project Leader(s) _____

Trainer _____

Date Project was started this year _____ Date Project was Completed _____

Dog Education Classes I attended:

Date _____ Subject _____ Leader _____

Date _____ Subject _____ Leader _____

Date _____ Subject _____ Leader _____

Date _____ Subject _____ Leader _____

Date _____ Subject _____ Leader _____

Presentations I made (on Presentation Day, at County Fair, or other events):

Date _____ Subject _____ Location _____

Date _____ Subject _____ Location _____

Date _____ Subject _____ Location _____

Clinics or Workshops I attended:

Date _____ Subject _____ Event _____

Date _____ Subject _____ Event _____

Date _____ Subject _____ Event _____

Information About My Dog

My Dog's Name Is: _____ Breed: _____

Dog's Age: _____ Sex: Male _____ Female _____ Spayed/Neutered: Yes _____ No _____

List Command that your dog obeys: _____

Number of training classes your dog group held _____ Number you attended _____

Average time spent training your dog per week _____

VACCINATION RECORD AND DATES (Expiration Dates)

Rabies _____ Parvo _____ Distemper, Hepatitis, Leptospirosis (DHLP2) _____
(Bordetella) Kennel Cough _____ Other (name & date) _____

EXHIBIT RECORD SHOW# _____

List all classes and all 4-H shows that you completed in this year including State Fair

Class (Name): _____

1st Show Date: _____ Placing: _____

2nd Show Date: _____ Placing: _____

3rd Show Date: _____ Placing: _____

County Award, Date: _____ Placing: _____ (At Fair Fun Show)

State Fair Date: _____ Placing: _____

Class (Name): _____

1st Show Date: _____ Placing: _____

2nd Show Date: _____ Placing: _____

3rd Show Date: _____ Placing: _____

County Award, Date: _____ Placing: _____ (At Fair Fun Show)

State Fair Date: _____ Placing: _____

Class (Name): _____

1st Show Date: _____ Placing: _____

2nd Show Date: _____ Placing: _____

3rd Show Date: _____ Placing: _____

County Award, Date: _____ Placing: _____ (At Fair Fun Show)

State Fair Date: _____ Placing: _____

Class (Name): _____

1st Show Date: _____ Placing: _____

2nd Show Date: _____ Placing: _____

3rd Show Date: _____ Placing: _____

County Award, Date: _____ Placing: _____ (At Fair Fun Show)

State Fair Date: _____ Placing: _____

Class (Name): _____

1st Show Date: _____ Placing: _____

2nd Show Date: _____ Placing: _____

3rd Show Date: _____ Placing: _____

County Award, Date: _____ Placing: _____ (At Fair Fun Show)

State Fair Date: _____ Placing: _____

Class (Name): _____

1st Show Date: _____ Placing: _____

2nd Show Date: _____ Placing: _____

3rd Show Date: _____ Placing: _____

County Award, Date: _____ Placing: _____ (At Fair Fun Show)

State Fair Date: _____ Placing: _____

OTHER 4-H ACTIVITES

List Below things that you did in your local group, county, district, or state:

Number of meetings your local club held _____ Number you attended _____

What office did you hold in your local 4-H group or special group (Teen Ambassador, etc.) in the county or state?

Check off the following activities: Puppy Class _____ Drill Team _____ Fun Show _____ Dog Camp _____

Entered two dog related projects at County Fair _____ AKC Good Citizenship Award (Year) _____

Enter the number (hours) involved in the following volunteer activities:

County Fair Snack Bar _____ Sold 10+ items during Nat'l 4-H Week _____ AKC Show _____

Community Service Projects:

Project _____ Date(s) _____ Hours _____

Project _____ Date(s) _____ Hours _____

Project _____ Date(s) _____ Hours _____

Other ways I volunteered this year: _____

List demonstrations and parades you participated in:

What other dog related activities did you participate in this year?

THE STORY OF YOUR PROJECT

On a separate piece of paper write or type a report of your experiences with your dog. You may want to keep a few notes on things when they happen. Tell about your dog and how you cared for it. Tell of any unusual experiences, difficulties, and pleasures you had in completing your project this year.

