

Cornell Cooperative Extension of Chautauqua County's

Extension Connection



Cornell Cooperative Extension
Chautauqua County

January 2022
Volume 7 - Issue 1

IN THIS ISSUE

Board and Association News	3
Agriculture	4-10
CSWCD	11-12
4-H/Youth Development	13-18
EFNEP (Expanded Food and Nutrition Education Program)	19

COVER PHOTO: A beautiful winter day
Photo provided by Pixabay

Your picture could be on our next cover!
Send your submission to lpc33@cornell.edu

The Chautauqua County Extension Connection (USPS #101-400)

The Chautauqua County Extension Connection (USPS#101-400) is published monthly by Cornell Cooperative Extension of Chautauqua County. Subscription included in minimum of \$65 Program Participation fee. Periodical Postage Paid at Jamestown, NY 14701. "POSTMASTER: Send address changes to the: Chautauqua County Extension Connection at 525 Falconer St. JCC Carnahan Center, PO Box 20 Jamestown, NY 14702-0020."

Information

Emily Reynolds

CCE Executive Director
eck47@cornell.edu
716-664-9502 ext. 201

Darcy Cramer

Finance Associate
dlc284@cornell.edu
716-664-9502 ext. 208

Lucia Conti

Association Administrative Assistant
lpc33@cornell.edu
716-664-9502 ext. 209

Lisa Kempisty

Dairy/Livestock Community Educator
lj4@cornell.edu
716-664-9502 ext. 203

Kate Ewer

4-H Community Educator
kde32@cornell.edu
716-664-9502 ext. 212

Molly Brown

4-H Community Educator
mrb287@cornell.edu
716-664-9512 ext. 216

Lisette Cabrera

4-H Administrative Assistant
lmc323@cornell.edu
716-664-9502 ext. 214

Molly Harvey

SNAP Ed
mmh273@cornell.edu
716- 664-9502 ext. 208

Mary Ryder

SNAP Ed
mer262@cornell.edu
716- 664-9502 ext. 217

SWNY Dairy, Livestock, and Field Crops Program

CCE Chautauqua
@JCC Carnahan Center
525 Falconer St. PO Box 20
Jamestown, NY 14702
716-640-0522
kaw249@cornell.edu

Lake Erie Regional Grape Program

6592 W. Main Road
Portland, New York 14769
716-792-2800

Cornell Vegetable Program

480 North Main Street
Canandaigua, NY 14424
585-394-3977 ext. 426

CCE - Chautauqua County

@ JCC Carnahan Center
525 Falconer St. PO Box 20
Jamestown, NY 14702-0020
Phone: 716-664-9502 Fax: 716-664-6327
www.cce.cornell.edu/chautauqua

Association News

Board of Directors

Shelly Wells, Ashville, President
Suzanne Fasett-Wright
Kimberly Witherow, Sherman
Anna Emke-Walker, South Dayton
Chad Buck, Kennedy
George Haffenden, Strykersville
Pat Walker, Kennedy
Alyssa Porter, Chautauqua
Camille Rosado
Jeff Miller, Cherry Creek
Ron Almeter, Westfield
Joe Osborne, Panama
Dinah Hovey, Master Gardener Rep
Dan Heitzenrater, County Executive Rep
John Hemmer, County Legislator
Dan Pavlock, County Legislator

Agriculture Program Committee

Derek Yerico, Dunkirk
Rosemary Joy, Fredonia
Mike Wilson, Silver Creek
Ron Almeter, Westfield
Jeff Miller, Cherry Creek
Jessica Brehm, Falconer
Kaitlyn Bentley, Jamestown
Ben Nickerson, Sherman

4-H Program Committee

Fred DeGolier, Ellicott
Brittany Begier
Linda Jarvis, Fredonia
Mary Jantzi, Clymer
Joe Osborne, Panama
Betty Catanese
Beth Southworth, Bemus Point
Kimberly Witherow, Sherman

4-H Program Advisory Chairpersons

Joyce Edwards	Clothing and Textiles
Dan Crowell	Dairy
Keith LaRoy	Goat
Roxanne Young	Dog
David Schauman	Beef, Meat Animal Sale
Kasey Fanara	Horse
Nannette Knappenberger	Snack Bar
Jamie Smith	Exhibition Poultry
Julie Covert	Market Poultry
Rebecca King	Rabbit
Ken Styers	Hog
Shawn Huntington	Sheep

From the Office of the Executive Director

Happy New Year and Thank You for your continued support of Cornell Cooperative Extension of Chautauqua County!

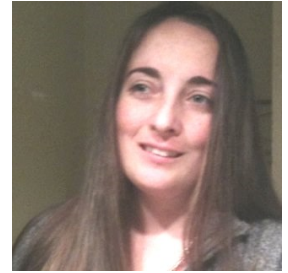
Just when we thought 2020 was weird enough, along comes 2021! I do hope that your year was full of more ups than downs and more memories than pain. It has been two years already since we moved to the JCC campus and with an extended lease we are looking forward to many more years of this partnership. We still have some limited access to the office and have found new ways of working through the struggles of the pandemic.

In many cases we are redeveloping programming every day. This year our annual meeting was all virtual in December. A very special thank you to Jennifer Phillips Russo for a great update at our annual meeting, and to Shelly Wells Board President for a fun interactive virtual platform. I enjoyed hearing from staff and board members. It is bittersweet that we say thank you to board members leaving our board of directors, Andy Joy and Mark McConnon, we will miss your support and insight on our board. We are pleased to welcome Suzanne Fassett-Wright and Camille Rosado to our board in 2022. We are also welcoming back Daniel Heitzenrater and look forward to his continued support. The Board of Directors and program committees are a valuable component of the Extension system, and we are blessed in Chautauqua County with some of the best members, this year we thank out going committee members on the 4-H youth development program committee, Dana Overend and Kathy Freeman. Saying thank you is never enough, program committee members do so much for our programs, we are looking forward to the insight and wisdom of those joining this year, Betty Catanese, a long time 4-H volunteer and parent and Brittany Begier (Woodard), a former 4-H member, have both agreed to serve on the 4-H youth development program committee. On the Agricultural Program Committee we are fortunate to have both Ron Almeter and Mike Wilson returning for another 3 year term. Thank you to all our volunteers who help us make our programs a success each year.

We are unable to host the 2022 Have a Heart for 4-H Green Tie Affair, but are asking for continued monetary support for our 4-H program. We are currently investigating alternative options. As you may know our 4-H Youth Development Program relies heavily on community support to keep our programs going. The Green Tie Affair is one of our largest fundraisers, annually raising \$25,000. We are very fortunate that the Chautauqua County legislature has recognized the value of our programming and increased the local tax dollar support to our programs, allowing us to keep the short-term special interest

programming previously covered by a grant program in effect for 2022. We look forward to continued outreach and impact through this support. Please remember to thank your local legislator as it was a unanimous decision to support our programming.

It is a time to rejoice in all of our blessings and to look forward to new opportunities. Over the last year, CCE has continued to come together and serve the community with a positive outlook on the future of Agriculture, youth development and nutrition. In times of stress and economic struggle, it can be difficult, but the positive feedback, encouraging stories and continued support gives us all hope and encouragement. It is my sincere hope that you find encouragement and positive programming opportunities from CCE-Chautauqua.



Chautauqua County Agricultural News

Field Crop Weed Identification and Control Series 2022 Webinars

Cornell Cooperative Extension, Cornell AgriTech and the School of Integrative Plant Science have organized a series of 6 webinars on weed identification and control to be offered on Wednesdays in 2022. They will occur from February 2nd to March 16th (except February 9th) from 12-1pm via Zoom.

Attendees will have the opportunity to earn 1 NYS DEC recertification credit per meeting, and Certified Crop Advisers (CCAs) may also earn 1 Pest Management credit.

Attendees may attend any/all of the webinars; there is no requirement to attend the full series. The series is free and open to all.

Schedule

- **February 2, 2022, Broadleaf Weed identification for crop production 12-1 pm (virtual) - Bryan Brown NYSIPM.**

Many of our most problematic weeds are broadleaf weeds. The best way to control them varies depending on the species, so it is imperative that weeds are identified correctly. In this session we'll go over some of the key distinguishing characteristics of the most problematic broadleaf weeds in NY field crops. For each species, we'll discuss some of the biology that makes it weedy and look for potential "Achilles heels" that can be exploited for management. We'll also review best practices for using smartphone weed ID apps.

NYSDEC credits: 1.0

CCA credits: 1.0 PM

Registration Link

https://cornell.zoom.us/webinar/register/WN_vAVpWQLZQOmRD4ESAdxwEg

- **February 16, 2022, Grass Weed identification for crop production 12-1pm (virtual) - Caroline Marschner, Ext. Assoc. Weed Ecology, Cornell**

Identifying grass and grass-like weeds can be challenging but, is necessary for good weed management. During this program we will discuss what traits to look for when identifying grasses, go over some of the common crop grass weeds, and share some resources for grass weed management.

NYSDEC credits: 1.0

CCA credits: 1.0 PM

Registration Link

https://cornell.zoom.us/webinar/register/WN_skC9zzukQfqkzGvuuJ-6fw

- **February 23, 2022, Weed management in corn 12-1pm (virtual) - Jeff Miller, Resource Educator, CCE Oneida County**

Weed control is an integral part of corn production. Cultural and chemical control methods should be incorporated in an integrated approach to control weeds. Cultural practices like crop rotation, tillage, and cover crops will be discussed. Herbicide families (site of action) efficacy, timing of application will be discussed for annual grasses and broadleaf weeds, perennial grasses, perennial broad leaf weeds and herbicide resistant weeds.



specializing in farm & crop insurance
farm owners • commercial auto • crop insurance
agribusiness • umbrella • workers comp

Sherry B Coventry
Agricultural Insurance Account Executive
716.926.8698
scoventry@evansagencyins.com

e EVANS INSURANCE AGENCY

NYSDEC credits: 1.0

CCA credits: 1.0 PM

Registration Link

https://cornell.zoom.us/webinar/register/WN_tJA7KjPDQ5mNRfnfBLvAsQ

- **March 2, 2022, Weed management in Soybeans 12-1pm (virtual) - Mike Hunter, Regional field crop specialist, CCE North Country Regional Ag Team**

Implementing integrated weed management practices in soybean production will be the focus of this presentation. Mike Hunter will share results from three years of on-farm soybean herbicides trials in New York State. He will provide the current status of herbicide resistant weeds in New York, and discuss effective herbicide resistant weed control strategies and how to manage resistant weeds on your farm.

NYSDEC credits: 1.0

CCA credits: 1.0 PM

Registration Link

https://cornell.zoom.us/webinar/register/WN_PIVxcgFaQay0XrP1nQiUyQ

- **March 9, 2022, Weed management in hay and pasture 12-1pm (virtual) - Janice Degni, Team Leader and field crop specialist, CCE SCNY regional team**

Weed Control for Hay Crops and Pastures

This session will provide a review of cultural and chemical weed control practices for clear alfalfa or grass, mixed stands, and pasture. It will include practices that give the hay species a competitive edge over weeds and herbicide options for different weed scenarios. Common difficult to control weeds in pasture will be covered as well as improvement of older hay stands with weed invasions.

NYSDEC credits: 1.0

CCA credits: 1.0 PM

Registration Link

https://cornell.zoom.us/webinar/register/WN_a-V74i04Qc-1xiS4zenWxA

- **March 16, 2022, Alternative weed control and weed seed management 12-1pm (virtual) - Lynn Sosnoskie, Asst. Prof. of weed ecology and specialty crop systems, School of Integrative Plant Science, Cornell**

Weeds are a significant threat to crop production due to 1) competitive interactions that limit yield potential, 2) physical interference that reduces harvest efficiency, and 3) serving as an alternate host for pests and pathogens. The evolution of herbicide resistant weeds (in particular marestail/horseweed/Canada fleabane, Palmer amaranth, waterhemp) further complicates weed control efforts by limiting the utility of commonly applied chemical tools. This talk will focus on the current state of herbicide resistance in NY and the future of chemical weed control. Novel weed management strategies, such as harvest weed seed control (HWSC) and electrical weeding will be discussed and recent research updates provided. Best management practices for suppressing unwanted vegetation, including combine and equipment clean-out to limit seed spread, will also be presented.

NYSDEC credits: 1.0

CCA credits 1.0 PM

Registration Link

https://cornell.zoom.us/webinar/register/WN_-1ANbfA5Tq2slCum5Dmicg

For more information about these programs, contact Jeff Miller at jjm14@cornell.edu or (315) 269-5599.



**CrackerJack Farm
Feed & Variety Store
716-499-9985**

Store hours: M-F - 4-8pm, Sat. 8am-Noon

The CrackerJack Farm remains a family operated farm specializing in Percheron Draft Horses and Horse-drawn Carriage / Wagon rides. In 2019 the family extended the farm operation to include Blue Seal Feed, and in 2020 we added Dry Creek Wood pellets along with Hand-crafted items made by family members.



Horse Feed:

- ◆ Sentinel: Performance LS, Lifetime
- ◆ Dynasty: Pro Pellet 14-6
- ◆ Mane Menu: Textured 14%,
- ◆ Oats: Plain & Crimped

Chicken Products:

- ◆ Economy Feed: 16% pellet
- ◆ Home Fresh: Starter, Breeder, Ex Egg Layer
- ◆ Organic: Starter, Broiler, Layer pellets
- ◆ Meal Worms & Scratch

Dog Products:

- ◆ Entrust: Puppy, Large Breed Puppy, Lamb & Rice, Chicken & Barley, Pork & Barley
- ◆ Natural 26: 5lb, 25lb, 50lb
- ◆ Peanut butter biscuit / dog toys

Cat Products:

- ◆ Entrust: Kitten, Adult Cat
- ◆ Barn Cat: 32 lbs

Rabbit Products:

- ◆ Home Fresh: Show Hutch Deluxe 17, Top Hutch 18
- ◆ Bunny: 16%

Wild Bird Products:

- ◆ Bird seed: Sing Along, Song Maker, Concerto
- ◆ Black oil Sunflower: 20 lb, 40 lb
- ◆ Nyjer Seed: 25 lb
- ◆ Suet Cakes: High Energy, Orange, Nut & Berry
- ◆ Bird houses & Feeders

Beef Products:

- ◆ Beef Show: Grower, Blender, Finisher
- ◆ Minerals: Kent 365 ADE
- ◆ Lick tubs: EnergiLass 32, EnergiLass 12AFC

Goat Products:

- ◆ Caprine Challenger
- ◆ Mane Menu
- ◆ Lick tub: EnergiLass Goat Tub

Bedding:

- ◆ Pine shavings / sawdust
- ◆ Hardwood shavings

Alpaca:

- ◆ Home Fresh Alpaca Crunch

*CrackerJack Farm Feed & Variety Store
4589 Bemus Ellery Road
Bemus Point, NY 14712
<https://crackerjack-farm.square.site>
716-499-9985*



TAX PREP • TAX PLANNING • ESTATE PLANNING • PAYROLL SERVICES • FARM BUSINESS CONSULTING • BENCHMARKS • APPRAISALS • RECORD-KEEPING

TAX PREPARATION Just as 2020 was a year unlike any other, filing your **2021** taxes will also be different. The financial circumstances brought on by COVID-19 could have a significant effect on the deductions and allowances available to your business. This year, more than ever, you will need a reliable ag tax specialist to help guide you through your unique tax situation. Contact Farm Credit East to keep your business **Strong at the Roots.**

800.929.2144
farmcrediteast.com/taxprep



"This one really works!"

— Rachel Maulfair



MAULFAIR ACRES, JONESTOWN, PENNSYLVANIA, David and Rachel Maulfair
85 cows, combined Holstein/Ayrshire RHA 25,000M 4.1F, SCC 200,000
(Above) Rachel is pictured with Evelyn, Mikaylia, Rosalie and Morgan

"We love Udder Comfort™ for fresh cows and show cows. It's our main way of managing udder issues and quality. Unlike other products we tried, this one really works!" says Rachel Maulfair.

David and Rachel milk 85 Holsteins and Ayrshires at Maulfair Acres, Jonestown, Pennsylvania.

"We use Udder Comfort on any cow with a high somatic cell count to get it down. We use it on any cow with mastitis, spraying the quarter along with, and sometimes without, treating.

"Udder Comfort works great to soften udders after bagging for a show or a classification, and it works well when wrapping a sore hock.

"We use Udder Comfort heavily on fresh cows. It reduces swelling and gets them off to a good start. That's the big thing. We just really love this product and have found endless ways of using it."

UDDER COMFORT™

Quality Udders Make Quality Milk

Maximum Results Minimal Cost

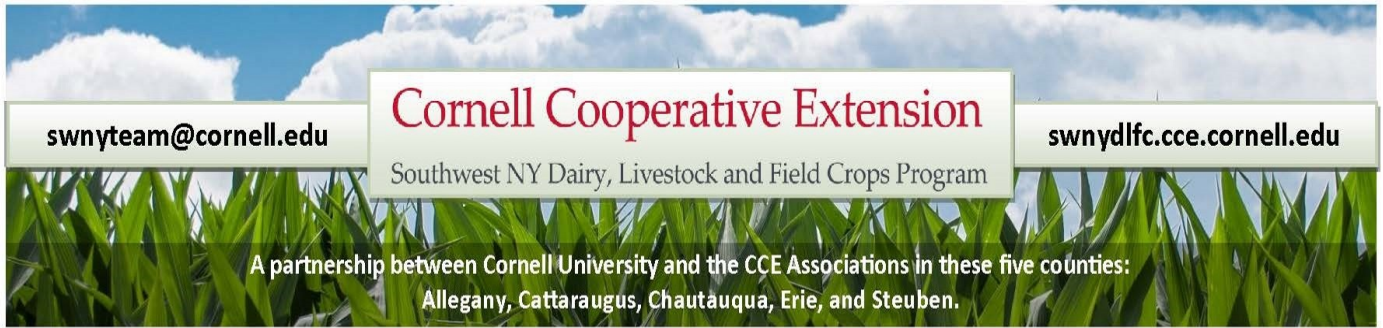
1.888.773.7153
uddercomfort.com

Call to locate a distributor near you.



For external application to the udder only after milking, as an essential component of udder management. Always wash and dry teats thoroughly before milking.





Cornell Cooperative Extension's Southwest New York Dairy, Livestock, and Field Crops Program (SWNYDLFC)

2022 Annie's Project: Know Your Numbers, Know Your Options - 1st Session

Annie's Project Know Your Numbers and Know your Options (KYNKYO) is a workshop series designed to deliver basic farm financial literacy that will empower farm women to better **understand** how financial statements assist in **making rational decisions**. KYNKYO helps farm women effectively communicate with their families, business partners, and lenders.



This is a five-part workshop series is comprised of five-two hour zoom meetings and work at home. From participating in this workshop, you will:

- Successfully prepare key financial statements for your farm business (balance sheet, income statement, and cash flow statement).
- Learn ways to critically review the financial statements (using ratio analyses) to better understand the financial position of your farm business.
- Expand your skills for farm decision making by learning about some key decision making tools.
- Start (or enhance) management team meetings for your farm business.

The workshop series will be held on five consecutive Tuesdays beginning January 25th through February 22nd from 12:30pm - 2:30pm. The cost to participate in this series is \$100 with scholarships available for those experiencing financial hardship. For more information contact Katelyn Walley-Stoll at kaw249@cornell.edu or 716-640-0522.

NOTE: If you are in need of a scholarship, simply email kaw249@cornell.edu with the subject line "KYNKYO Scholarship Request" and include your contact information.



LARRY ROMANCE & SON, INC.
Parts - Sales - Service

Come see us for all your Vineyard - Dairy - Construction & Consumers Needs

SHERIDAN, NY • 2769 ROUTE 20
(716) 679-3366 • tractorsales@netsync.net

ARCADE, NY • 543 W. MAIN ST.
(585) 492-3810

www.larryromanceandson.com

Cornell Cooperative Extension

FARMER TAX \$CHOOL

Tax Management for Beginning and Small Farm Businesses

January 18, 2022, 7pm - 9pm, \$10/farm

Location: Online via Zoom

A one-night virtual meeting for beginning and part-time farmers that provides useful tax information enabling participants to be make better tax decisions for their business. Federal and state income taxes will be covered. Tax regulations specific to NYS will be covered as well.

This course is part of Cornell Cooperative Extension's Farmer Tax School: An educational series from Cornell Cooperative Extension Farm Business Management Specialists offering courses designed to inform and empower farm managers to better understand their tax obligations, management strategies, and improve farm profitability. **COST:** Each course has its own fee. See below for more information regarding our program scholarships.

REGISTRATION: Register online by visiting: https://swnydlfc.cce.cornell.edu/event_preregistration_new.php?id=1684

This is REQUIRED three business days in advance of the workshop. You can register for one, some of, or all courses. Following your registration, you will receive a confirmation email and an invitation to complete a pre-course survey. This survey will help our instructors tailor the topics covered in each course.

CAN'T MAKE IT LIVE?: Sign up any and we'll send you a recording following the workshop.

TECH REQUIREMENTS: Zoom (on phone, tablet, or computer). You may also call in and request paper documents be mailed to you.

IS THIS FOR ME?: This series has options for agricultural producers of all shapes, sizes, and time in business.

Experiencing financial hardship? Attend for free! Select the "scholarship" option at payment. Support for this option is made possible by our generous sponsors.

Farm Specific Tax Code Benefits

Tuesday, January 25th 7pm - 8:30pm \$5/farm

For farm businesses of all shapes and sizes, tune in to learn more about the tax advantages available for farms. This workshop will include information for the current tax season.

REGISTRATION: Register online by visiting: https://swnydlfc.cce.cornell.edu/event_preregistration_new.php?id=1685

For more information, or for assistance in finding the course that is right for you, contact your regional Farm Business Management Specialist

Katelyn Walley-Stoll, Southwest New York Dairy, Livestock, and Field Crops, 716-640-0522, kaw249@cornell.edu

A SMART CHOICE

Choosing the right insurance is about more than just getting the quickest quote. For more than a century, **AMERICAN NATIONAL** has provided reliable service and knowledgeable advice from local agents who take the time to listen and understand your unique needs.



GEORGE HAFFENDEN LUTCF
AGENT

716.386.5393

ghaffenden@American-National.com

PO Box 300 Strykersville, NY 14145

<https://an.insure/georgehaffenden>

Products and services may not be available in all states. Terms, conditions and eligibility requirements will apply. Life insurance and annuity products underwritten by American National Life Insurance Company of New York, Glenmont, New York. Property and casualty products and services may be underwritten by Farm Family Casualty Insurance Company or United Farm Family Insurance Company, both of Glenmont, New York.

License 000000

14-065,87136,V4.03.20

Public Funding Sources: for NYS Livestock Slaughter and Processing Facilities - Webinar

January 27, 2022, 6:30pm - 8:00pm
Online Webinar - Zoom

In this webinar, we will cover topics that will help current and potential livestock slaughter and processing business owners and managers prepare for, identify, and apply for public funding sources.

Pre-registration is required by going to https://cornell.ca1.qualtrics.com/.../SV_6yVwJ0XCZgS8NJc or by contacting Dana Havas at (607) 391-2664 or dmh353@cornell.edu.

Why buy crop insurance?

Higher input costs, market fluctuations and unanticipated weather events are why many of our customers are choosing to manage these risks with a crop insurance policy.

Contact Kelsey today to learn more.



KELSEY MAPSTONE
Northeast Marketing Agent
28 E. Chautauqua Street
Mayville, NY 14757
Office 716.753.2144 | Cell 315.708.9883
Kelsey.Mapstone@CropGrowers.com

CROP GROWERS
Your first choice for crop insurance.

YIELD PROTECTION | REVENUE PROTECTION | CROP HAIL COVERAGE | DAIRY REVENUE PROTECTION

NY Master Forest Owner/COVERTS Program

Yours for the asking!

A free, no-obligation visit from a volunteer neighbor.

The Master Forest Owner (MFO)/COVERTS program provides private forest owners of NYS with information and encouragement necessary to manage their forest lands. Over 200 experienced volunteer MFOs are available, ready to assist neighbor forest owners with the information needed to start managing their forests. All MFOs are graduates of a 4-day training program, where they learn about sawtimber and wildlife management, forest economics, and ecology.

NY Master Forest Owner Program



Regional Director:
Brett Chedzoy
CCE of Schuyler County
323 Owego St Unit #5
Montour Falls, New York 14865
607-535-7161, bjc226@cornell.edu

Sponsors:
New York Forest Owners Association,
The Robert H. Wentorf, Jr. Foundation,
USDA National Institute of Food
& Agriculture,
Cornell Cooperative Extension

Roger Penhollow Master Forest Owner Volunteer

4063 Pancake Hill Rd.
Bemus Point, NY 14712
716-386-2111

rogerpenhollow@gmail.com

Cell: 716-450-6008

An on-site, no obligation visit to your woodlot is absolutely free!

www.cornellmfo.info

Are you interested?

NYS Forest owners may contact an MFO for information about the program and discuss opportunities for obtaining more satisfaction from one's woods. At your request, an MFO will arrange a visit with you at your woodlot to get a first-hand look and discuss sources of assistance or information. MFO's are experienced and knowledgeable individuals who can put you in touch with the right people to meet your goals. The MFO can also be instrumental in helping you develop a management plan for your property.

For a listing of MFOs in your area, contact your Cornell Cooperative Extension County office, your Regional NYS Department of Environmental Conservation Forestry office, or see the website: www.cornellmfo.info.

Why is this Program Necessary?

Over 14 million acres of woodland in NYS are privately owned. That's over 3/4 of NY's forests!

It is estimated that less than 1/4 of the state's private forest holdings are purposefully managed despite the educational programs and technical services available. Sound stewardship is necessary to optimize the benefits of this vital resource.

Forests represent a precious commodity that, if wisely managed, can generate a variety of economic, ecologic, and aesthetic values to forest owners and their communities, generation after generation.

Program Results

The program has helped over 1,500 forest owners via on-site visits since its inception in 1991.

Based on surveys of visited forest owners:

- 34% of forest owners prepare a written plan.
- 60% of the forest owners meet with a forester.
- 32% of the forest owners implement wildlife management practices.
- 42% of forest owners seek more information on forest management.
- 20% of the forest owners used the information to save or earn on average \$7,000 in the year preceding the survey.

In addition, MFOs annually participate in hundreds of community service efforts involving forestry education.

For more information on the program contact:

Gary Goff, MFO Program Director

Fernow Hall, Cornell University, Ithaca, NY 14853

Phone: 607-255-2824 E-mail: grg3@cornell.edu

Chautauqua County Soil & Water Conservation District Newsletter

Northcrest Business Center, 220 Fluvanna Ave,
Suite 600, Jamestown, NY 14701
Phone (716) 664-2351 Ext 5
Email: chaut-co@soilwater.org
Board Meetings are held the third Wednesday
of each month at 8:30 AM
Board of Directors: Fred Croscut, Jay Gould,
Bruce Kidder, Allen Peterson, Lisa Vanstrom



SWCD Staff: David Spann, District Field Manager
Cassandra Pinkoski, Grant Specialist
Greg Kolenda, District Field Technician
Hailey Brown, Water Quality Technician

NRCS Jamestown Field Office:
Robert Nothdurft, Resource Conservationist
Anna Emke-Walker, Soil Conservationist

Conservation District Announces Annual Tree & Shrub Sale

Each year Chautauqua County Soil and Water Conservation District introduces thousands of bare root seedlings into Chautauqua County, New York. All plants that are selected for the District's annual sale are selected for their quality rating for hardiness in Chautauqua County and are made available to the public at an affordable rate to promote landowner conservation.

Landowners can practice conservation by planting seedlings and wildflowers to support pollinators and provide food and shelter to wildlife, reduce heating/cooling expenses, protect water quality with buffers, reduce air pollution and stabilize eroded land. Seedlings are an inexpensive way to replace trees that have been damaged, harvested or lost to disease.

All stock that is sold is bare root, meaning the plant is harvested with little or no soil attached to the roots. Because the stock is bare root, plants must be harvested and replanted while in a dormant state and while soil conditions are still moist.

For the upcoming 2022 sale, the District selected thirty-five species that are native to the State of New York, twenty-five of which are native to Chautauqua County.

A total of thirteen conifer varieties will be offered: including Eastern Larch and European Larch. A total of sixteen hardwood varieties will be offered: including Northern Pecan and Paw Paw. A total of eighteen shrub varieties will be offered: including Coralberry, Elderberry, and Rose of Sharon.

A total of two native fern varieties will be offered. A total of five berry varieties will be offered, including blueberries and gooseberries. Apple, Peach, Pear and Fruit Cocktail (Apricot, Cherry, Nectarine, Peach and Plum) packages will also be offered.

Please note that stone fruit varieties included in the Fruit Cocktail package will have the best survival rate when introduced into Northern Chautauqua County, closest to Lake Erie.



In addition to domestic fruit tree packages, Apple, Cherry (Tart), Pear and mixed (Apple, Cherry, and Pear) wildlife tree packages will also be available. Please note that fruit trees that are included in wildlife tree packages may be slightly misshapen but are still hardy and suitable enough to be planted to enhance or develop a wildlife area.

Wildlife tree packages and conservation seed mixes are extremely popular with local conservationists and sportsman. The eight conservation seed mixes that will be offered in this year's catalog are ideal for food plots, thrive in a variety of soil types and support wildlife and wild game. (Conservation seed mixes are also available outside of the Districts annual sale.)

Tree protector tubes and stakes, weed control mats, tree plantation signs, fertilizer pellets, conservation seed mixes and other nonperishable items are also made available during the annual sale.

Chautauqua County Soil & Water Conservation District's 2022 Tree & Shrub Catalog is anticipated to be mailed out by January 1st, the deadline to order out of the catalog will be April 1st.

Visit SoilWater.org to download a catalog and order form after January 1st or feel free to call 716-664-2351 Ext. 5 or to email Chaut-Co@soilwater.org to make sure that you are on the District's tree and shrub mailing list. Be sure to specify if you would like to receive a paper catalog in the mail or if you prefer to receive a digital copy by email.

Please be advised that our office located on Fluvanna Avenue is currently closed to the public and that Tree & Shrub orders will be distributed via curb-side pick-up with COVID-19 safety measures in place at our Storage Barn located at 3542 Turner Road in Jamestown, New York on a specified date at the end of April. The exact date will be announced as soon as it is determined.

The District would also like to inform pond owners that Barely Straw Pond Kits that are used to control

algae can be purchase prior to the annual sale, as the kits should be added to the pond as soon as the ice leaves the pond in the spring for optimal results.


Those interested should contact Chautauqua County Soil & Water Conservation District Monday through Friday to schedule a time to pick up their kit. Please be advised that our office is closed to the public and special arrangements will need to be made in advance.

Like and follow Chautauqua County Conservation District on Facebook to receive sale updates and learn more about the District.

Chautauqua County Soil & Water Conservation District is focused on the conservation of soil, water and the natural resources within Chautauqua County. The District upholds this responsibility by synchronizing the efforts of a number of cooperating agencies, concerned businesses, landowners and units of Government in order to implement best management practices that support and promote environmental responsibility.



January

Sunday	Monday	Tuesday	Wednesday	Thursday	Friday	Saturday
						1
2	3	4 4-H Clover Connection 6:30 PM	5 Hog Committee 6:30 PM	6	7 Dairy Bowl Practice JCC 6:00 PM	8
9	10 Goat Committee 6:45 PM	11 Horse Committee 6:30 PM	12 Dog Committee 7:00 PM	13	14	15
16	17  Holiday	18 Horse Project 7:00 PM	19 Dog Project 6:30 PM Hog Project 6:30 PM	20 Beef Committee 7:00 PM Sheep Project 7:00 PM	21	22
23	24 Goat Project 6:45 PM Market Poultry Committee 6:30 PM	25	26	27	28	29
30	31					

February

Sunday	Monday	Tuesday	Wednesday	Thursday	Friday	Saturday
		1 4-H Clover Connection 6:30 PM	2 Hog Committee 6:30 PM	3	4 Dairy Bowl Practice JCC 6:00 PM	5
6	7 Rabbit Committee 7:00 PM	8 Exhibition Poultry Project 6:30 PM Horse Committee 6:30 PM	9 Dog Committee 7:00 PM Market Poultry Project 6:30 PM Market Poultry Committee (to follow Project Mtg.)	10 Sheep Committee 6:00 PM Sheep Project 7:00 PM	11	12
13	14 Rabbit Project 6:30 PM	15 Exhibition Poultry Committee 7:00 PM	16 Dog Project 6:30 PM Hog Project 6:30 PM	17 Beef Committee 7:00 PM	18	19
20	21  Holiday	22	23	24	25	26
27	28 Horse Project 6:30 PM					



Dear 4-H Friends,

Chautauqua County 4-H is a wonderful organization where families, volunteers, and the community wholeheartedly support 4-H youth. I have had the pleasure of working alongside the 4-H community for the past six years but for personal reasons, I have resigned from my position as 4-H Community Educator and my last day will be Friday, January 28, 2022.

I am honored to have had the opportunity to be a small part of the lives of the young people who participate in 4-H. It is so rewarding to watch everyone grow and learn in their own way, create lifelong friendships, and succeed as young adults when they have aged out of the program.

Thank you is not a big enough sentiment to express how grateful I am for the support of Extension staff and 4-H families and volunteers who have supported the program through continued funding struggles, transitioning to JCC, and of course the COVID-19 pandemic.

I wish you all the best ,

Kate Ewer

9th Annual 4-H Green Tie Affair on Hold

The in-person Green Tie Affair Fundraising dinner has been cancelled due to concern of rising COVID-19 cases. In an effort to raise funds needed to support programming, 4-H is holding a letter campaign. Those who have contributed to 4-H in the past will receive information via mail about current programming. If you would like more information please contact the 4-H Office at 716-664-9502 ext. 214.

It's Pheasant Time!

The Department of Environmental Conservation is once again distributing day-old pheasant chicks in June for the rearing and release project to qualified 4-H members. Rearing pheasants is enjoyable, challenging, and teaches youth responsible behavior. People enjoy seeing and hearing pheasants. If you would like to order chicks, please call the 4-H Office 664-9502 x 214 no later than Friday, March 11th. First year participants should order no more than 8-12 birds. If you would like to get advice prior to placing your pheasant chick order, please contact Evan Wills at 607-273-2768. A pheasant rearing publication is available at the 4-H Office as well. Please note that the 4-H Office will be taking orders for 4-H youth participants only. Adults should contact the DEC to order their pheasant chicks. We apologize for any inconvenience.

Animal Science Project First Meetings

Consider attending the first meeting of any animal science project that you may be interested in joining. Each animal project has different guidelines, and the first meeting will give an overview of the project, requirements for project completion, and overall expectations of project participants. Cloverbuds are ineligible to participate in the beef cattle and hog projects at this time.

Meetings will take place at JCC and via Zoom. Zoom links will be shared via the Chautauqua County 4-H Facebook page and on the events section of the CCE website (cce.cornell.edu/chatuauqua)

Horse

January 18, 2022; 6:30pm at JCC

Market Poultry

February 9, 2022; 6:30pm at JCC



NYS 4-H Livestock Summit

More info and registration at

<https://ccedc.wildapricot.org/event-4564109>

This event will consist of 6 regular virtual speaker sessions all based on livestock topics. These regular sessions will be held on Wednesday's at 6:30pm in January and February. A follow up session will be held after each speaker session the following Friday at 6:30pm where participants can engage in a fun recap of that week's topic! NEW this year, there will also be TWO Advanced sessions offered, of which youth can sign themselves up for! These advanced sessions will be held on Monday's at 7:00pm. The advanced sessions do not have an age limit, so please consider the session topic when registering.

This event is open to all New York State 4-H members between the ages of 8-18. Each session will have a giveaway and all participants in attendance will be automatically entered into it for the chance to win a prize from one of our awesome sponsors!

Cost of participation is \$10 which will give youth access to all of the speaker and follow-up sessions. After the last speaker session date, all prizes and participation goodies will be mailed out! Registration will remain open for the entirety of the session dates.

Session Dates and Topics

Monday January 10, 2022, 7:00 PM 8:00 PM (EST)

Advanced Session

Farrow to Wean: Why the start to your show pig's life is important

Wednesday January 12, 2022, 6:30 PM 7:30 PM (EST)

Healthy Skin Means Happy Hair: common skin conditions and how to prevent them

Wednesday February 2, 2022, 6:30 PM 7:30 PM (EST)

The Makings of a Market Lamb: feeding a market lamb for the winner's circle

Monday, February 7, 2022, 7:00 PM 8:00 PM (EST)

Advanced Session

From a Clean-tested Herd: what CL, CAE & Johne's mean for your herd or flock

Wednesday, February 9, 2022, 6:30 PM 7:30 PM (EST)

It's All in the Labels: the real meaning and how to make them work for you!

Wednesday, February 16 2022, 6:30 PM 7:30 PM (EST)

Sensible Selection: keys to selecting a successful Market Steer

Wednesday, February 23, 2022, 6:30 PM 7:30 PM (EST)

It's Snout or Never: How to own the ring in Hog Showman-ship

New York State 4-H Dairy Events

This information was shared via Debbie Grusenmeyer from the NYS 4-H Office. More detailed information coming soon!

Virtual statewide 4-H Dairy Bowl

6:30 to 7:45 PM-February 3,10,17, and 24, 2022. More information and registration will come out after the 1st of the year.

New York State Dairy Discovery Workshop

At this time planning for an in-person program on Cornell campus-March 25 and 26th, 2022. More information in January 2022.

New York State 4-H Dairy Quiz Bowl-

In-person event planned at this time to be held in Morri-son Hall on Cornell Campus on April 23, 2022.

New York Farm Bureau Scholarship

Application due March 1, 2022

Applicant Guidelines

- 2022 graduating High School Seniors who will continue their education to prepare for a career in some way connected to the diverse agricultural industry. This includes advancing their education through college or pursuing advanced training in the skilled trades.
- Live or work on a farm or be involved with agriculture via any avenue.
- Family Farm Bureau membership or Student Farm Bureau membership is required. [Students can join as a Student member by visiting www.nyfb.org/membership](https://www.nyfb.org/membership) .

Process and Procedure

Applications & information is available at the NYFB website, www.nyfb.org or more specifically <https://www.nyfb.org/programs/promotion-education/scholarship>

Mammals All Around Us

Join the Cornell University Youth Nature and Outdoor Education Program Work Team for a free, virtual series for any youth (regardless of 4-H enrollment status), parents, and volunteers!

Each 45 minute educational session will be jam-packed with educational fun about mammals that you can find in New York State.

The series will take place at 6:30 PM on January 24th and 31st and February 7th and 14th .

Register at https://reg.cce.cornell.edu/4HMammals_235

All About 4-H Presentations

Public Presentation Day is March 5, 2022

Why Give a Presentation?

Every 4-H member from Cloverbuds to seniors profit in some way from planning and presenting a demonstration or illustrated talk. Poise, confidence and self assurance grow each time a person makes a presentation. Through demonstrations and talks, 4-H members have the opportunity to:

- Work on something they like and in which they have an interest.
- Gain new knowledge and learn about a specific subject.
- Learn to plan and organize their thoughts so they can express themselves more clearly.
- Emphasize the major points of a presentation through the use of visuals or examples.
- Develop good judgment, speech and actions before an audience.
- Listen to the opinions of others.
- Teach and show others improved methods and practice s learned through 4-H, thus performing a service to the community.
- Take part in interesting events and activities

➔ **Practice Makes Perfect!**

Types of Presentations

Demonstration

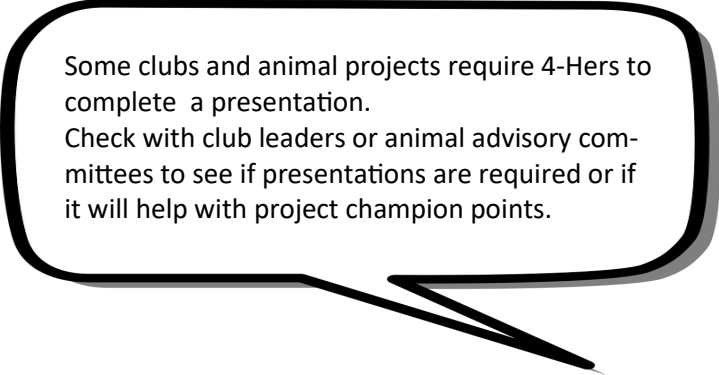
The presenter shows and explains how to make something. (how to juggle, do basic dance steps, build a kite, etc.) Appropriate equipment, models or illustrations, posters/visuals are used to explain information being conveyed and to show the steps in the process being demonstrated.

Illustrated Talk

The presenter uses visual aids to tell about the topic. The effective use of charts, pictures, posters, slides, powerpoint slides, examples, models, etc. play a major role in communicating the presenter's message.

Speech

The presenter aims to persuade, motivate, or inform the audience without the use of visuals. Proper use of note cards is acceptable. The presenter chooses and researches a topic of choice. A speech I written in the presenter's own words, however poetry, quotations, humor or imagery may be incorporated to command attention or emphasize a point.



Some clubs and animal projects require 4-Hers to complete a presentation. Check with club leaders or animal advisory committees to see if presentations are required or if it will help with project champion points.

How do I sign up for Public Presentation Day?

Club Members

Talk with your club leader about signing up.

Lone Members

Call the 4-H Office at 716-664-9502 ext. 214 or email Lisette at lmc323@cornell.edu with your presentation title, type, length of presentation, and preferred time to present.

The deadline to register for a presentation is **February 21, 2020!**



Recitation

The presenter, with the use of vocal inflection and body language as communication tools, delivers their rendition of a piece of pre-written material. Props/costumes should not be used but appropriate dress to subtly represent the character or mood of the written piece is acceptable. Dress should not overwhelm the oral presentation. Memorization is expected, but proper use of notes is permitted either in the form of note cards or a book. This is not intended for presentation of original pieces of material written by the presenter.

Dramatic Interpretation

The presenter or team of two deliver a re-enactment of a piece of scripted material. The content can be taken from plays, movies, sketches, or monologues—dramatic or comedic. This form of presentation should include props and costumes when applicable. Original pieces written by the presenters are accepted in this category.

What to Expect on Presentation Day

1. Arrive roughly ten minutes before your scheduled time to present. You can sign in and get a seat in the room you are presenting in.
2. You will present sometime within the hour you requested. Be prepared to watch a few other presentations. Feel free to ask questions and be a part of the engaged audience. You might be surprised how much you learn!
3. The judges will call you up or ask for the next presenter. Don't be shy! Take your time setting up your poster, PowerPoint, and/or props.
4. Let the judges know when you're ready to begin .
5. Be sure to begin your presentation with a catchy introduction and also your name, age, club or lone member status, and how many years you've been in 4-H and how many presentations you've given.
6. When you've completed your presentation be sure to ask for questions. Repeat the question before answering in case a member of the audience missed the question.
7. Thank everyone for their time. Take down your models/poster/etc. and head to the hallway to wait to meet with the judges.
8. The judges will deliberate. They will invite you in to get feedback on your presentation and you will receive your score sheet and ribbon.
9. After you meet with the judges you are free to leave. Please remember to take all presentation materials with you when you're finished.
10. You will be notified if you are selected to move on to the Western District competition. This is a great opportunity to compete against the best public speakers in Wyoming, Niagara, Erie, Cattaraugus, and Allegany counties!

1. Poster or PowerPoint?

2. The choice to use a poster, model, or power-point type presentation is completely up to the presenter, the type of presentation, and the ability of the youth.
3. Power-point type presentations must be on a flash drive. Internet availability is not always guaranteed. A computer will be provided so that there are no issues connecting to the projector.



Tips on Giving Effective Presentations

Eye Contact – Using a lot of eye contact makes people feel connected to you.

Gestures – Gestures can help you paint with words, but make sure they can't get in the way.

Enthusiasm – Be enthusiastic. If you don't care, why should they?

Articulation – Articulate your words clearly so the members of your audience will understand you.

Breath – breathing helps you control your nervousness. It also gives you time to gather your thoughts. Remember that a pause can be used to provide emphasis.

Posture – Correct posture conveys confidence.

Tone – The tone of your voice can create or change a mood.

Dress – Dress for success. Be neat and professional. Don't wear loud accessories that will distract members of the audience.

1. **Language** - Use proper language and be careful not to use non-words such as "um" and "uh" too often.

Smile – A smile will not only make you look and feel better, but make your audience more receptive.

1. Important Parts of a Presentation

2. Introduction

3. Consider opening your presentation with a catchy phrase, joke, or something related to the presentation.

4. Introduce yourself and state your age, club, years in 4-H and how many presentations you have given.

5. Organize your presentation so the information flows appropriately and makes sense to the audience.

6. Close every presentation with a summary as well as the source of your information. Be specific– the "internet" or "Google" are not specific answers.

7. Ask if the audience has any questions (if it makes sense for the presentation—it may not be appropriate for recitation or dramatic interpretation). Be sure to repeat the question asked so the entire audience can be included.

Thank the audience for their time.

How long should a presentation last?

Cloverbuds and first-time presenters should shoot for a 3-5 minute presentation.

1. Presentation length usually increases as experience increases however no presentation should last longer than 15 minutes.

Give the 4-H office a call if you have any questions.

Animal Project News



Beef Project

Committee Meetings

Thursday, January 20, 2022
7:00 PM at JCC

Committee Chair: Dave Schauman
janschauman@gmail.com



Hog Project

Committee Meetings

Wednesday, January 5, 2022
6:30 PM at JCC
Wednesday, February 2, 2022
6:30 PM at JCC

Project Meeting

Wednesday, January 19, 2022
6:30 PM at JCC
Wednesday, February 16, 2022
6:30 PM at JCC

Please note: One parent/guardian MUST attend meetings with their 1st and 2nd year members.

The **Ohio State Swine Resource Handbook** will be available for purchase for \$20. Please see a committee to purchase.

Committee Chair: Ken Styers
styersk@yahoo.com



Sheep Project

Committee Meetings

Thursday, February 10, 2022
6:00 PM at JCC

Project Meeting

Thursday, January 20, 2022
7:00 PM at JCC
Thursday, February 10, 2022
7:00 PM at JCC

Committee Chair: Shawn Huntington
shuntington@randolphcsd.org



Dairy Project

4-H Dairy Bowl Practice

6:00 pm at JCC
Carnahan Bldg., Jamestown
Friday, January 7, 2022
Friday, February 4, 2022

Committee Chair: Dan Crowell
Annam@acct-solutions.com



Rabbit Project

Committee Meetings

Monday, February 7, 2022
7:00 PM at JCC

Project Meeting

Monday, February 14, 2022
6:30 PM at JCC

Committee Chair: Becky King
redyeking@yahoo.com



Dog Project

Committee Meetings

Wednesday, January 12, 2022
7:00 PM
Wednesday, February 9, 2022
7:00 PM

Project Meeting

Wednesday, January 19, 2022
6:30 PM
Wednesday, February 16, 2022
6:30 PM

Committee Chair: Roxanne Young
roxy6825@windstream.net



Horse Project

Committee Meetings

Tuesday, January 11, 2022
6:30 PM at JCC
Tuesday, February 8, 2022
6:30 PM at JCC

Project Meetings

Tuesday, January 18, 2022
7:00 PM at JCC
Monday, February 28, 2022
7:00 PM at JCC

Committee Chair: Kasey Fanara
blondieshort24@yahoo.com



Goat Project

Committee Meetings

Monday, January 10, 2022
6:45 PM at JCC

Project Meeting

Monday, January 24, 2022
6:45 PM at JCC

Contact: Keith LaRoy
716-485-1537



Market Poultry Project

Committee Meetings

Monday, January 24, 2022
6:30 PM at JCC
Wednesday, February 9, 2022
To Follow Project Meeting

Project Meeting

Wednesday, February 9, 2022
6:30 PM at JCC

Committee Chair: Julie Covert
jcoverts@windstream.net



Exhibition Poultry Project

Committee Meetings

Tuesday, February 15, 2022
7:00 PM at JCC

Project Meeting

Tuesday, February 8, 2022
6:30 PM at JCC

Committee Chair: Jamie Smith
smith_jamie@mac.com



4-H Clover Connection

Tuesday, January 4, 2022—6:30 PM at JCC

*Stop in or log on to learn more about Public Presentation Day Prep

Tuesday, February 1, 2022—6:30 PM at JCC

*Stop in or log on to learn more about the Spring Fundraiser and Award Trips

Kick off 2022 right! Take the 30 day fruit and vegetable challenge!

January 2022

Find recipes at <https://www.myplate.gov/myplate-kitchen>

Sun	Mon	Tue	Wed	Thu	Fri	Sat
						1 Happy 2022!
2 Eat at least 1 vegetable and 1 fruit serving for 6	3 Try a fruit smoothie.	4 Shop for vegetables to eat at lunch each	5 Have 2 different colored vegetables today.	6 Add a vegetable to a casserole.	7 Ask your family to add favorite vegetables to the shopping	8 Have a fruit at breakfast.
9 Eat at least 2 vegetable and 1 fruit serving for 6	10 Snack on vegetables or fruit today.	11 Try a new fruit .	12 Have a bowl of soup loaded with vegetables.	13 Add a vegetable salad to one of your meals	14 Make homemade pizza and use vegetables	15 Try a vegetable smoothie today.
16 Eat at least 2 vegetable and 2 fruit servings for 6	17 For breakfast try a fruit and low fat yogurt parfait.	18 Load a sandwich, wrap or taco with vege-	19 Add fruit to your cereal.	20 Making macaroni and cheese? Add a bag	21 Top a baked potato with vegetables.	22 Making a crockpot meal? Add an extra bag of
23 Eat at least 3 vegetable and 2	24 Fresh, canned or frozen—choose 1	25 Have stir fry tonight and add a	26 Dunk raw veg- gies in low fat dip or	27 Make a fruit salad. Include fresh,	28 Shake things up. Add canned fruit	29 Grab fruit for a snack today.
30 Finish strong with 3 vegetable and 3 fruit servings	31 Congratulations on completing the 30 day challenge!					

The EFNEP program provides nutrition education to low income families and children in counties throughout New York State.

A series of 8 classes is offered to adults in a variety of settings.

Workshop series include:
Family Nutrition Education Curriculum
Finding A Balance - Diabetes
Healthy Cents
Breastfeeding.

A series of 6 classes is offered to youth aged 8-12 in school and at after school locations.

Workshop series include:
Choose Health: Food, Fun and Fitness; Teen Cuisine

If you or your organization is interested in scheduling classes, please call your local nutrition educator:

This material was funded by the USDA's Expanded Food and Nutrition Education Program.

Fruit and Dreamy Dip

Make 4 servings : Serving size 4 tablespoons dip plus fruit

Ingredients

Fresh fruits: try fruits in season - apples, bananas, peaches, pears (you can also use canned fruits)

Dip:

1 cup plain low-fat yogurt
1 tablespoon honey
Pinch of cinnamon (optional)

Directions

Wash the fresh fruit or rinse canned fruit.

Slice fruit into bite-size pieces.

Prepare dip; stir the yogurt, honey and cinnamon together. Chill before serving.

Arrange fruit on a plate and serve with the dip.



KORNER

I From your public library
D borrow "Little Critter:
S Just a Snowman" by Mercer Mayer. Read this book with your child and then head outside and build a snowman, snow woman or other snow creature together.

Nutrition facts for 4 tablespoons dip plus fruit: 140 calories, 1g total fat, 0.5g saturated fat, 5mg cholesterol, 40mg sodium, 31g total carbohydrate, 4g dietary fiber, 23g total sugars, 4g added sugars, 4g protein, 0% Vitamin D, 8% calcium, 0% iron, 4% potassium, 6% calories from fat

Source: Healthy Cents curriculum by the University of Maryland

The Chautauqua County Extension Connection
(USPS#101-400) is published monthly by
Cornell Cooperative Extension of Chautauqua
County, JCC Carnahan Center
525 Falconer Street, PO Box 20
Jamestown, NY 14702-9608.

Periodical Postage Paid at
Jamestown, NY 14701.

Cornell Cooperative Extension is Chautauqua County's link to Cornell University. Our purpose is to make available to the individuals, families, communities, and businesses of Chautauqua County the resources and research-generated knowledge of Cornell University. By identifying and addressing local needs, Cornell Cooperative Extension provides practical information to help people help themselves and develop their leadership potential. Please feel free to contact Cornell Cooperative Extension for more information.

*The "Extension Connection" is prepared by the CCE staff and is published monthly by Cornell Cooperative Extension - Chautauqua County. **If you have information for the "Extension Connection" it needs to be in the CCE office by the 10th of each month for the following month's issue.***

The views expressed in presentations made at CCE meetings or other CCE events are those of the speaker and not, necessarily, of CCE or its Board of Directors. Presentations at CCE events, or the presence of vendors at CCE events, do not constitute an endorsement of the vendor or speaker's views, products or services.

With regard to any information presented at any CCE event, CCE does not make any warranty, express or implied, including the warranties of merchantability and fitness for a particular purpose, and specifically disclaims any legal liability or responsibility for the accuracy, completeness, or usefulness of any information, apparatus, product, service or process presented and makes no representation that its use would not infringe upon privately owned or intellectual property rights such as Copyright, Trademark, Trade Dress etc.

The presence of a commercial vendor at a CCE event, and the presentation by any vendor of any information regarding any specific commercial products, process, or service by trade name, trademark, manufacturer, or otherwise, does not constitute or imply CCE's endorsement, recommendation, or favoring of such item or organization.

Any such material presented by any vendor in any format, without limitation, is for informational purposes only. Any potential customer of any vendor, who is present at a CCE event, is expected to conduct their own due diligence and assessment of the vendor, product, or services as appropriate for their needs.

The information herein is supplied with the understanding that no discrimination is intended and no endorsement by Cornell Cooperative Extension is implied. Please contact the Cornell Cooperative Extension - Chautauqua County office if you have any special needs. Cornell Cooperative Extension of Chautauqua County is an Equal Opportunity Program and Employer.