

Cornell Cooperative Extension of Chautauqua County's

Extension Connection



Cornell Cooperative Extension
Chautauqua County

August 2023
Volume 8 - Issue 8

IN THIS ISSUE

Board and Association News	3
Agriculture	4-11
4-H/Youth Development	13-16
Master Gardener	17
EFNEP (Expanded Food and Nutrition Education Program)	18-19

COVER PHOTO:

Views from the Chautauqua Produce Auction in Clymer, NY. Veggies are in full bloom—be sure to support local producers this growing season!

Your picture could be on our next cover!

Send your submission to lpc33@cornell.edu

The Chautauqua County Extension Connection (USPS #101-400)

The Chautauqua County Extension Connection (USPS#101-400) is published monthly by Cornell Cooperative Extension of Chautauqua County. Subscription included in minimum of \$65 Program Participation fee. Periodical Postage Paid at Jamestown, NY 14701. "POSTMASTER: Send address changes to the: Chautauqua County Extension Connection at 525 Falconer St. JCC Carnahan Center, PO Box 20 Jamestown, NY 14702-0020."

Cornell Cooperative Extension of Chautauqua County

Staff Contact Information

Emily Reynolds

CCE Executive Director
eck47@cornell.edu
716-664-9502 ext. 201

Darcy Cramer

Finance Associate
dlc284@cornell.edu
716-664-9502 ext. 208

Lucia Conti

Association Administrative Assistant
lpc33@cornell.edu
716-664-9502 ext. 209

Lisa Kempisty

Dairy/Livestock Community Educator
ljk4@cornell.edu
716-664-9502 ext. 203

Cassandra Skal

Agriculture Program Coordinator
cks83@cornell.edu
716-664-9502 ext. 202

Lindsey Crisanti

Youth Development Lead Educator
lc832@cornell.edu
716-664-9502 ext. 212

Lisette Cabrera

4-H Program Coordinator
lmc323@cornell.edu
716-664-9502 ext. 214

Molly Harvey

SNAP Ed
mmh273@cornell.edu
716-664-9502 ext. 208

Mary Ryder

SNAP Ed
mer262@cornell.edu
716-664-9502 ext. 217

Wendy Alexander

EFNEP Nutrition Educator
wa66@cornell.edu
716-664-9502 ext. 221

Ko Svetanics

EFNEP Nutrition Educator
kosvetanics@me.com
716-664-9502 ext. 215

Shannon Rinow

Master Gardener Volunteer Coordinator
smr336@cornell.edu
716-664-9502 ext. 224

SWNY Dairy, Livestock, and Field Crops Program

CCE Chautauqua
@JCC Carnahan Center
525 Falconer St. PO Box 20
Jamestown, NY 14702
716-640-0522
kaw249@cornell.edu

Lake Erie Regional Grape Program

6592 W. Main Road
Portland, New York 14769
716-792-2800

Cornell Vegetable Program

480 North Main Street
Canandaigua, NY 14424
585-394-3977 ext. 426

CCE - Chautauqua County

@ JCC Carnahan Center
525 Falconer St. PO Box 20
Jamestown, NY 14702-0020

Phone: 716-664-9502 Fax: 716-664-6327

www.cce.cornell.edu/chautauqua

Association News

Board of Directors

Ron Almeter - President
Randolph (Randy) Henderson - Vice President
George Haffenden - Treasurer
Suzanne Fasett-Wright - Secretary
Chad Buck
Pat Walker
Alyssa Porter
Camille Martir Rosado
Jeff Miller
Dan Heitzenrater
Patty Benton
Jan Schauman
Louis Smith
Dinah Hovey, Master Gardener Rep
John Hemmer, County Legislator
Tom Nelson, County Legislator
Renee Mooneyham - Extension Specialist

Agriculture Program Committee

Derek Yerico, Dunkirk
Rosemary Joy, Fredonia
Mike Wilson, Silver Creek
Ron Almeter, Westfield
Jeff Miller, Cherry Creek
Jessica Brehm, Falconer
Ben Nickerson, Sherman
Virginia (Ginny) Carlberg, Jamestown

4-H Program Committee

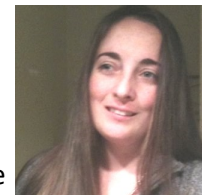
Brittany Begier, Jamestown
Mary Jantzi, Clymer
Betty Catanese, Stockton
Beth Southworth, Bemus Point
Kimberly Witherow, Sherman
Louis Smith, Silver Creek
Laura LeBarron, Silver Creek
Jan Schauman, Jamestown

4-H Program Advisory Chairpersons

Joyce Edwards	Clothing and Textiles
Bart Nickerson	Dairy
Keith LaRoy	Goat
Roxanne Young	Dog
David Schauman	Beef, Meat Animal Sale
Kasey Fanara	Horse
Nannette Knappenberger	Snack Bar
Jamie Smith	Exhibition Poultry
Julie Covert	Market Poultry
Kim Chapman	Rabbit
Ken Styers	Hog
Shawn Huntington	Sheep

From the Office of the Executive Director

Wrapping up another year of the Chautauqua County Fair leaves me in awe of the wonderful programs provided by CCE Chautauqua. From our amazing 4-H youth and volunteers to our Master Gardeners and Agricultural and nutrition educators there is so very much showcased at the fair. It is also always very overwhelming to see the support of community members. This year's 4-H market sale was energizing, exciting and inspiring. The community supports our 4-H youth to the fullest extent. Thank you to all the buyers and back bidders for another successful sale in which 94% of the sales are returned directly to the youth member.



Thank you also to all the volunteers both within CCE and the fair board who make the fair possible each year. Congratulations to all the youth on a job well done, not only winning ribbons, trophies and buckles but to each of you for presenting quality animals and projects for the public to celebrate and learn about agriculture.

There are still many more educational opportunities available this summer and fall. Be sure to check out all the details in this issue. I hope to see you all at the upcoming Farmer Neighbor Dinner.

A SMART CHOICE

Choosing the right insurance is about more than just getting the quickest quote. For more than a century, **AMERICAN NATIONAL** has provided reliable service and knowledgeable advice from local agents who take the time to listen and understand your unique needs.



GEORGE HAFFENDEN LUTCF
AGENT

716.386.5393

ghaffenden@American-National.com

PO Box 300 Strykersville, NY 14145

<https://an.insure/georgehaffenden>

Products and services may not be available in all states. Terms, conditions and eligibility requirements will apply. Life insurance and annuity products underwritten by American National Life Insurance Company of New York, Glenmont, New York. Property and casualty products and services may be underwritten by Farm Family Casualty Insurance Company or United Farm Family Insurance Company, both of Glenmont, New York.

License 000000

14-065.87136.V4.03.20

Chautauqua County Agricultural News



“Empire Livestock – Vision & Plans for the Future”

presented by new owner Heidi Nicholas

Wednesday, September 13, 2023

6:30 pm

Lakewood Fireman’s Training Grounds

Packard Street, (off Summit Avenue), Lakewood, NY

(A complimentary light meal will be provided – RSVP’s requested)

Everyone interested in learning more about marketing livestock is invited to attend.

Our guest speaker will be Heidi Nicholas, new owner of the 6 Empire Livestock sale barns and co-owner with her husband Gene of Nicholas Meats, an 800 head/day slaughterhouse near Loganton, Pa. Heidi and Gene also have over 20,000 head on feed at various lots from NY through the west. Heidi will join us to talk about her vision and plan for Empire Livestock, including the ramping up of beef marketing sales, renovation of barns, bringing in out of state buyers, board sales and more.

A complimentary light meal including Hamburger & Hotdogs will be provided.

To accurately plan for the meal, reservations are requested by Friday, September 8th by contacting Ted Card at 716-664-0356 or by email at lvlg1259@netsync.net.

This informational program and dinner are sponsored by: Southern Tier Trailer, Eckman Insurance Agency, Chautauqua County Beef Producers Association & the New York Beef Producers’ Association Region 2, with support from Cornell Cooperative Extension of Chautauqua County.

Artificial Insemination Training for Beef and Dairy to be Offered

An AI training is being planned in Chautauqua County for early October 2023 for beef and dairy cattle producers and farm employees interested in learning how to breed cows. Dates, locations, and training costs are yet to be determined.

This AI training will include one day of classroom training and one day of hands-on Artificial Insemination training at a farm. Please contact Lisa Kempisty, Extension Educator at 716-664-9502 Ext 203 or lj4@cornell.edu if you have an interest in participating and to learn more details.

Chautauqua Grown
Open Barn Doors Day
SUNDAY, SEPTEMBER 17, 2023
10:00 AM until 4:00 PM
Animals | Demonstrations | Tours
Local products | Vendors | Family Fun

Visit our website for more information!

The Chautauqua County Holstein Club hosted the 75th Annual Holstein Show on Saturday, July 22, 2023 at the Chautauqua County Fairgrounds in Dunkirk, New York.

Mr. Andy Reynolds of Corfu, New York was the official judge for the day with 92 head of cattle shown and 20 group classes.

Show Committee members were Nichelle and Lona Carlberg, Co-Chairs, Dennis Carlberg, Randy Wiltsie, Bill Kane, Nicholas Yotopolis, Larry Brown, Jeremy McChesney, Andy Miller and Anna Crowell.

The following are the top 3 placings in each class:

JUNIOR HEIFER CALF - Sr. Show - 1) Wayward-Wind H FC Tarzana, Onnolee Lind & Larry & Beanie Hill, Cassadaga; 2) MS Big Guns Anlyst Zebra-ET, Larry & Beanie Hill, Falconer; 3) Green-Banks Rebel Rush-Red, Tyler Crowell, S. Dayton. **Jr. Show - 1)** Green-Banks Rebel Rush-Red, Tyler Crowell, S. Dayton; 2) Oakfield Crush 9041-ET, Ana Frederes, Falconer; 3) Reliance Allyoop Force, Emmersen Crawford, Clymer.



Judge Andy Reynolds, Mike Delcamp, Jr. Champ. Crestlea Solomon Pearl-ET, Madison Woodis, Patrick Sweatman, Brandon Nickerson, Res. Jr. Champ. Wayward-Wind H. Doc Tambourine, Larry Hill

INTERMEDIATE HEIFER CALF - Sr. Show - 1) MS Big Guns Anlyst Zara-ET, Larry & Beanie Hill, Falconer; 2) MS Halocrest Warr Crystalyne, Howard Ivett & Country Ayre, S. Dayton; 3) Smithson KW Sidekick 7502, Evangeline Woodis, Dewittville. **Jr. Show - 1)** Smithson KW Sidekick 7502, Evangeline Woodis, Dewittville; 2) Redcarpet Rtside Of It-ET, Emmersen Crawford, Clymer; 3) Wall St Rlight Roullette-Red, Erma Wolcott, Mayville.

SENIOR HEIFER CALF - Sr. Show & Jr. Show - 1) Rockytop-JN Warrior Tia-ET, Liam Nickerson, Sherman; 2) MS Shadeline Awsme Nesquick, Evangeline Woodis, Dewittville; 3) Reliance Analyst Chicago, Collin Crawford, Clymer.

SUMMER YEARLING HEIFER - Sr. Show - 1) Reliance Sidekick Capri, Collin Crawford, Clymer; 2) Retso-Vail KD 2nd Wave-ET, Cole Nickerson, Corry; 3) Reyncrest Hon Live It Up-ET, Larry & Beanie Hill & Dylan Neckers, Falconer; **Jr. Show - 1)** Reliance Sidekick Capri, Collin Crawford, Clymer; 2) Retso-Vail KD 2nd Wave-ET, Cole Nickerson, Corry; 3) K-AC-E Master Assassin, Collin Crawford, Clymer.

JUNIOR YEARLING HEIFER - Sr. Show - 1) Wayward-Wind-H Doc Tambourine, Onnolee Lind & Larry & Beanie Hill, Cassadagar; 2) Halocrest Cliff Starlite-Red, Howard Ivett, S. Dayton; 3) Green-Banks Analys 8751-Red, Tyler Crowell, S. Dayton; **Jr. Show - 1)** Green-Banks Analys 8751-Red, Tyler Crowell, S. Dayton; 2) Day-Dream Chief Corona, Miranda Nickerson, Corry; 3) KA-DE Farms Doc Terra, Devon Centner, Sinclairville.

INTERMEDIATE YEARLING HEIFER - Sr. Show - 1) Crestlea Solomon Pearl-ET, Sweatman, Woodis, Nickerson, Delcamp, Sherman; 2) Country Ayre Tattoo 7134-ET, Lily Woodis, Dewittville; 3) Green-Banks War 8665-Red-ET, Ana Frederes, Falconer. **Jr. Show - 1)** Country Ayre Tattoo 7134-ET, Lily Woodis, Dewittville; 2) Green-Banks War 8665-Red-ET, Ana Frederes, Falconer.

SENIOR YEARLING HEIFER - Sr. Show - 1) Halocrest K Doc Cher-ET, Howard Ivett, S. Dayton; 2) J-Folts Dundee Phoebe, Erma Wolcott, Mayville; **Jr. Show - 1)** J-Folts Dundee Phoebe, Erma Wolcott, Mayville.

SR. SHOW - JUNIOR CHAMPION - Crestlea Solomon Pearl-ET, Sweatman, Woodis, Nickerson, Delcamp, Sherman.

RESERVE JUNIOR CHAMPION & BEST BRED & OWNED UNDER 2 YEARS OLD - Wayward-Wind H Doc Tambourine, Onnolee Lind & Larry & Beanie Hill, Cassadaga.

BEST RED & WHITE UNDER 2 YEARS OLD - Halocrest Cliff Starlite-Red, Howard Ivett, S. Dayton.

Jr. Show - JUNIOR CHAMPION - Rockytop-JN Warrior Tia-ET, Liam Nickerson, Sherman.

RESERVE JUNIOR CHAMPION - Smithson KW Sidekick 7502, Evangeline Woodis, Dewittville.

JUNIOR BEST THREE FEMALES - Sr. Show - 1) Reliance Dairy, Sherman; 2) Howard Ivett, S. Dayton; 3) Saxton-Hill, Cassadaga.

JUNIOR TWO YEAR OLD - Sr. Show - 1) & 1st Best Udder - Yotpolis Unix TGIF, Nicholas Yotpolis, Clymer; 2) & 2nd Best Udder, A-Logansway Select Beverage, Collin Crawford, Clymer; 3) & Production Winner, Eminent Reeve Baby-Red, Anna Carlberg, Jamestown. **Jr. Show - 1)** A-Logansway Select Beverage, Collin Crawford, Clymer; 2) Eminent Reeve Baby-Red, Anna Carlberg, Jamestown.

SENIOR TWO YEAR OLD - Sr. Show - 1) Hobby-Acres Sidekick Glimpy, Larry & Beanie Hill & Dylan Neckers, Falconer; 2) & 1st Best Udder & Production Winner, Country Ayre Hancock 6666, Lily Woodis, Dewittville; 3) & 2nd Best Udder, Redcarpet Moovin Emma-Red-ET, Leighanne Swan, Sherman.

Jr. Show - 1) Country Ayre Hancock 6666, Lily Woodis, Dewittville; 2) Redcarpet Moovin Emma-Red-ET, Leighanne Swan, Sherman; 3) Tri-Swan Ammo P Layla-Red, Larsen Swan, Sherman.

JUNIOR THREE YEAR OLD - Sr. Show - 1) & 1st Best Udder, Laspada Awesome Allie-Red, Reliance Dairy, Sherman; 2) & 2nd Best Udder, Cash-Al More Sugar-Red, Brandon Nickerson, Sherman; 3) Halocrest Crusha Sugar-TW, Howard Ivett, S. Dayton. **Jr. Show - 1)** Ms Warrior Ace, Leighanne Swan, Sherman.

SENIOR THREE YEAR OLD - Sr. Show - 1) & 1st Best Udder, Reliance Kendal 10167, Liam Nickerson, Sherman; 2) & 2nd Best Udder & Production Winner, Smithson KW Tatoo Tilly, Country Ayre & LaCasa De Leche, Dewittville. **Jr. Show - 1)** Reliance Kendal 10167, Liam Nickerson, Sherman.

Sr. SHOW - INTERMEDIATE CHAMPION FEMALE - Yotpolis Unix TGIF, Nicholas Yotpolis, Clymer.

Sr. SHOW RESERVE INTERMEDIATE CHAMPION - Reliance Kendal 10167- Liam Nickerson, Sherman.

Jr. SHOW INTERMEDIATE CHAMPION FEMALE - Reliance Kendal 10167, Liam Nickerson, Sherman.

Jr. SHOW RESERVE INTERMEDIATE CHAMPION - Country Ayre Hancock 6666, Lily Woodis, Dewittville.

FOUR YEAR OLD - Sr. Show - 1) & 1st Best Udder & Production - Country Ayre Rio 5869, Country Ayre, Dewittville. 2) & 2nd Best Udder - Plum Uber Livewire, Cole Nickerson, Corry; 3) Depot Byway Strap, Larry & Beanie Hill & Dylan Neckers, Falconer. **Jr. Show** - Plum Uber Livewire, Cole Nickerson, Corry.

FIVE YEAR OLD - Sr. Show - 1) & 1st Best Udder, Saxton-Hill Beemer Babygirl, Denise Saxton, Cassadaga.

AGED COW - Sr. Show - 1) & 1st Best Udder - Yotpolis Guthrie Louanna, Nicholas Yotpolis, Clymer; 2) & 2nd Best Udder - Halocrest Avalanch True-ET, Howard Ivett, S. Dayton.

SENIOR CHAMPION - Sr. Show - Country Ayre Rio 5869, Country Ayre, Dewittville;

RESERVE SENIOR CHAMPION - Plum Uber Livewire, Cole Nickerson, Corry.

GRAND CHAMPION - Country Ayre Rio 5869, Country Ayre, Dewittville;

RESERVE GRAND CHAMPION - Plum Uber Livewire, Cole Nickerson, Corry.

BEST BRED & OWNED OF SHOW & CHAMPION UDDER - Country Ayre Rio 5869, Country Ayre, Dewittville.

SENIOR CHAMPION & GRAND CHAMPION - Jr. Show - Plum-Uber Livewire, Cole Nickerson, Corry.

RESERVE GRAND CHAMPION - Reliance Kendal 10167, Liam Nickerson, Sherman.

BEST BRED & OWNED OF YOUTH SHOW - Tri-Swan Ammo-P Layla, Larsen Swan, Sherman.

BEST RED & WHITE OF SHOW - Laspada Awesome Allie-Red, Reliance Dairy, Sherman.



Judge Andy Reynolds, Evangeline Woodis, Sophie Woodis, Grand Champ. Country Ayre Rio 5869, Madison Woodis, Lily Woodis, Emman Rowe, Randi Frank, Res. Gr. Champ. Plum-Uber Livewire, Cole Nickerson

PRODUCE OF DAM - Sr. Show - 1) Onnolee Lind & Larry & Beanie Hill, Cassadaga; 2) Nicholas Yotpolis, Clymer; 3) Howard Ivett, S. Dayton. **Jr. Show - 1)** Tyler Crowell, S. Dayton; 2) Devon Centner, Sinclairville.

DAM AND DAUGHTER - Sr. Show - 1) Nicholas Yotpolis, Clymer; 2) Reliance Dairy, Sherman; 3) Howard Ivett, S. Dayton. **Jr. Show - 1)** Anna Carlberg, Jamestown.

BEST 3 FEMALES - Sr. Show - 1) Country Ayre, Dewittville; 2) Howard Ivett, S. Dayton.

EXHIBITOR'S HERD - Sr. Show - 1) Country Ayre, Dewittville; 2) Reliance Dairy, Sherman; 3) Howard Ivett, S. Dayton.

PREMIER BREEDER - Howard Ivett, S. Dayton.

PREMIER EXHIBITOR - Reliance Dairy, Sherman.

The Committee would like to thank all of the sponsors for this show: Jeff Winton Associates, LLC; Wall Street Dairy, LLC; Cargill Feed & Nutrition; Gay Mark Tire & Wheel; Ormond Farm; Dairy One; Great Lakes Insurance Services Group; IBA; Larry Brown; Erika Huyck, DVM; Barney's Hoof Trimming; LandPro Equipment LLC; Southern Tier AI Services; Westfield Ag & Turf; Betty Crowell; Green Banks Farm; 3 C's Catering & The Falcon's Nest Banquet Hall; A. R. Timmel Farm Equipment; Halocrest Holsteins; Carlberg Farm Livestock and Produce; Country Ayre Farm; Cline Crest Farm; Gold Star Feed and Grain LLC; Growmark; Falcon-Crest Holsteins; Alliance Advisory Group; Kanecrest Farm; John Wiggers and Son, Inc.; Harry Austin Milling; NYP; International Protein Sires; Farm Credit; Steamburg Milk Producers Coop.; Lictus Oil & Propane; Animal Hospital of Waterford; JAVA Farm Supply; The Forage Source, LLC; JMI; Rodgers & Sons, Inc. and Fisher & Thompson Inc.



**CrackerJack Farm
Feed & Variety Store
716-499-9985**

Store hours: M-F - 4-8pm, Sat. 8am-Noon

The CrackerJack Farm remains a family operated farm specializing in Percheron Draft Horses and Horse-drawn Carriage / Wagon rides. In 2019 the family extended the farm operation to include Blue Seal Feed, and in 2020 we added Dry Creek Wood pellets along with Hand-crafted items made by family members.



Horse Feed:

- ◆ Sentinel: Performance LS, Lifetime
- ◆ Dynasty: Pro Pellet 14-6
- ◆ Mane Menu: Textured 14%,
- ◆ Oats: Plain & Crimped

Chicken Products:

- ◆ Economy Feed: 16% pellet
- ◆ Home Fresh: Starter, Breeder, Ex Egg Layer
- ◆ Organic: Starter, Broiler, Layer pellets
- ◆ Meal Worms & Scratch

Dog Products:

- ◆ Entrust: Puppy, Large Breed Puppy, Lamb & Rice, Chicken & Barley, Pork & Barley
- ◆ Natural 26: 5lb, 25lb, 50lb
- ◆ Peanut butter biscuit / dog toys

Cat Products:

- ◆ Entrust: Kitten, Adult Cat
- ◆ Barn Cat: 32 lbs

**4-H Discounts
Available**

Rabbit Products:

- ◆ Home Fresh: Show Hutch Deluxe 17, Top Hutch 18
- ◆ Bunny: 16%

Wild Bird Products:

- ◆ Bird seed: Sing Along, Song Maker, Concerto
- ◆ Black oil Sunflower: 20 lb, 40 lb
- ◆ Nyjer Seed: 25 lb
- ◆ Suet Cakes: High Energy, Orange, Nut & Berry
- ◆ Bird houses & Feeders

Beef Products:

- ◆ Beef Show: Grower, Blender, Finisher
- ◆ Minerals: Kent 365 ADE
- ◆ Lick tubs: EnergiLass 32, EnergiLass 12AFC

Goat Products:

- ◆ Caprine Challenger
- ◆ Mane Menu
- ◆ Lick tub: EnergiLass Goat Tub

Bedding:

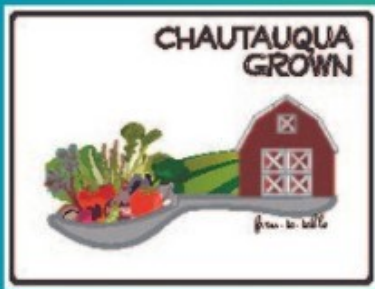
- ◆ Pine shavings / sawdust
- ◆ Hardwood shavings

Alpaca:

- ◆ Home Fresh Alpaca Crunch

*CrackerJack Farm Feed & Variety Store
4589 Bemus Ellery Road
Bemus Point, NY 14712
<https://crackerjack-farm.square.site>
716-499-9985*





What's New?

Chautauqua Grown Monthly Update

AUGUST 2023

Berries, Veggies, Chaut. Grown Open Barn Door Day, and More!

By Cassandra Skal, Agriculture Program Coordinator

July brought on all of the berries and cherries! You can still find a few u-pick locations around the county but berries are slowing down now. While berries and early vegetables are slowing down sweet corn, zucchini, squash, potatoes, beans, and onions are picking up!

A great event that is coming up is the 6th Annual Chautauqua County Farmer-Neighbor Dinner. This dinner will be on Tuesday August 22nd and will be held at The Grandview of Ellington. Tickets are going fast but this is a great event that showcases local producers around the county. Our supper will be prepared by 3 C's catering with products donated from many Chautauqua Grown producers such as; Peterson Farm, Carlberg Farm Produce, Green Heron Growers, Bear Ridge Farm, Haff Acres, Yerico Farm, Walkers Beef Farm, Abers Acres, Bit-O-Breeze, Hamlet Farm, JM Joy Farm, Panama Bee Farm, Big Tree Maple, Bee Happy Farm and Apothecary, and Knights Vineyard. Flower centerpieces are being created and donated by Emma J Brook Flower Farm, who is also a Chautauqua Grown producer. We all hope to see you at this great event! Tickets can be reserved by contacting Cassandra at cks83@cornell.edu or 716-664-9502 ext. 202.

I hope you made it to the fair to see more Chautauqua Grown producers showing their animals and learning from each other and the judges on how to grow the best animals possible. It was wonderful to see so many local producers together and helping to educate the public on agriculture.

Keep your calendars free on Sunday, September 17th, as we are continuing to put together the Chautauqua Grown Open Barn Doors Day! This event will showcase Chautauqua Grown farms all over the county and allow additional Chautauqua Grown producers to attend as well. You can expect this to be great, free, family event!

Please make sure to visit the Chautauqua Grown producers at the local Farmer's Markets all over the county - they all appreciate your support!

Thank you to all the producers for your hard work and sharing your agricultural knowledge with others interested in learning about the agricultural industry!





Farmer-Neighbor Dinner

August 22, 2023

The Grandview of Ellington
1116 West Hill Road, Ellington, NY

Social Hour: 5:00pm - Dinner: 6:15pm - Presentation of Awards to follow

Dinner Ticket - \$20.00

Children 12 and under - \$10.00

Agriculture Advocate - \$175

includes reserved table for 8 (full table) & name in the program

Seating is limited RSVP by Aug. 4

For information & reservations contact Cassandra @ 716-664-9502 ext 202

Snap Shot of Agriculture in Chautauqua County

1,228 Farms in the County	223,634 Acres in farmland	Milking Cows 182 farms 18,888 cows	Grapes 307 farms 16,953 acres	Sweet Corn 22 farms 168 acres	Raspberries 31 farms 96 acres	Maple Syrup 62 farms 37,114 gallons
---------------------------------	---------------------------------	--	-------------------------------------	-------------------------------------	-------------------------------------	---

Chautauqua Grown Updates:

If you are a Chautauqua Grown producer, please take some time to look over your listing and email or call Cassandra with any edits.

cks83@cornell.edu
716-664-9502 ext. 202



LARRY ROMANCE & SON, INC.

Parts - Sales - Service

Come see us for all your Vineyard - Dairy - Construction & Consumers Needs

SHERIDAN, NY • 2769 ROUTE 20
(716) 679-3366 • tractorsales@netsync.net

ARCADE, NY • 543 W. MAIN ST.
(585) 492-3810

www.larryromanceandson.com



TAX PLANNING BUILT TO SAVE YOU MONEY.



Our ag tax specialists deliver money-saving strategies.

The taxes you owe don't have to be a surprise – at least not with a defined tax strategy from Farm Credit East. Our ag tax specialists can work with you to develop a tax strategy that minimizes the taxes you pay. Contact the tax specialists at Farm Credit East for a plan that works for you.

farmcrediteast.com | 800.929.2144



- Loans & Leases
- Financial Record-Keeping
- Payroll Services
- Profitability Consulting
- Tax Preparation & Planning
- Appraisals
- Estate Planning
- Beginning Farmer Programs
- Crop Insurance



“Faye keeps getting better... Udder Comfort helps keep a youthful udder.”

— Steve Vail



ELITE DAIRY II, EDGE VIEW GENETICS, Copake, NY, 80 Brown Swiss, incl. CUTTING EDGE THUNDER FAYE 3E9 96MS 06/06 365d 2X 26910 4.4 1196 3.4 919 DHIR. At 10, she was 2023 NE Classic Grand Champion in April, after 4 All-American honors earned in 2019, 2020, 2021, and unanimous 2022 at age 9 fresh with 6th calf. She is two-time World Dairy Expo Grand Champion Brown Swiss, once Res. Supreme. Top left photo by Cowsmo



“At age 9, fresh with a 6th calf in June 2022, Cutting Edge Thunder Faye 3E95 96MS was repeat WDE Brown Swiss Grand in Oct. 2022 and AA for the 4th year, this time unanimous. “Faye keeps getting better,” Steve Vail, herd manager and Tim Coon, hooftrimmer and fitter agree. “I love to work with these great cows,” says Steve of the 80 cows at Elite Dairy II, home of Ken Main and Kenny Jo Manion’s Edge View Genetics, Copake, NY, where a Summer Showcase sale will happen July 1.

“Udder Comfort™ helps keep a youthful udder. We use it on any swelling, on all fresh cows, and at all shows,” says Steve. “We wouldn’t use it if it didn’t work, and it works great.”

UDDER COMFORT™ Quality Udders Make Quality Milk

Maximum Results Minimal Cost

1.888.773.7153 · uddercomfort.com
uddercomfort.blog [@uddercomfort](https://www.facebook.com/uddercomfort)

Call to locate a distributor near you.

For external application to the udder only, after milking, as an essential component of udder management. Always wash and dry teats thoroughly before milking.



Chautauqua County Soil & Water Conservation District Newsletter

Northcrest Business Center, 220 Fluvanna Ave,
Suite 600, Jamestown, NY 14701
Phone (716) 664-2351 Ext 5
Email: chaut-co@soilwater.org
Board Meetings are held the third Wednesday
of each month at 8:30 AM
Board of Directors: Fred Croscut, Pierre Chagnon,
Bruce Kidder, Allen Peterson, Lisa Vanstrom



SWCD Staff:
David Spann, District Field Manager
Cassandra Pinkoski, Grants Specialist
Greg Kolenda, District Field Technician
Hailey Laramie, Water Quality Technician
NRCS Jamestown Field Office Staff:
Robert Nothdurft, District Conservationist
Anna Emke-Walker, Soil Conservationist

Agricultural Assessments

Partial Reduction in Real Property Taxes for Eligible Farmland in New York State

In 1971, New York State legislature enacted the New York Agricultural District law to protect and promote the availability of land for farming purposes. As part of this legislation, the law allows for reduced property tax bills for land in agricultural production by limiting the assessment of such land to its agricultural value. Owners whose land satisfies the eligibility requirements may apply for an agricultural assessment.

Landowners must file an application (RP-305 or RP-305-r) with their local assessor to receive an agricultural assessment for their parcels. **The local assessor is who determines eligibility.**

In order to be eligible, the following requirements must be met:

Land generally must consist of seven or more acres that were used in the preceding two years for the production for sale of crops, livestock, or livestock products;

The annual gross sale of agricultural products must average \$10,000 or more. If the size is less than seven acres, the average annual gross sales must equal \$50,000 or more.

Agricultural assessment is limited to land used in agricultural production. Up to 50 acres of farm woodland is eligible for the assessment per eligible tax parcel. Land under a structure within which crops, livestock, or livestock products are produced is also eligible for the assessment.

Since farm operations encompass more than one parcel, eligibility is determined by combining separately assessed parcels that are farmed together as a single

operation. However, a separate application for each assessed parcel must be made.


Rented land for agricultural purposes may receive an agricultural assessment. If the rented land satisfies the basic eligibility requirements, it can be eligible for the assessment. In addition, if the rented land does not satisfy the average gross sales requirements, it may still be eligible if it is farmed, under a written rental agreement of at least five years, with other farmland that satisfies all eligibility requirements.

What you have to do...




The landowner's first step in applying for an agricultural assessment is to contact their tax assessor. Once they have determined that you qualify for the program, contact Chautauqua County Soil & Water Conservation District to create a soil group worksheet. District Staff will coordinate an appointment with you to help fill out the "Soil Group Worksheet". This worksheet distinguishes the acreage of a farm parcel in each soil group. The landowner then transfers this information to the "Application for an Agricultural Assessment" sheet, available through your local assessor's office. The worksheet and application, along with a soil map generated by District staff, are all submitted to the assessor by the taxable status date. In most towns, taxable status date is March 1st, but it is advisable that you confirm this with your local assessor. Landowners must file an application each year, however, if there are no changes since the previous year, a short form application can be used.

The fee for classification of the soil group worksheet is \$25 dollars per parcel. For more information, or to schedule an appointment, feel free to call Chautauqua County Soil and Water Conservation District office at 716-664-2351 ext. 5. The District operates under normal business hours, Monday through Friday from 8 A.M. to 4:30 P.M.

August

Sunday	Monday	Tuesday	Wednesday	Thursday	Friday	Saturday
		1	2	3 State Fair Information Meeting 6:30 PM	4	5
6	7 Rabbit Committee 7:00 PM	8	9 Hog Committee 6:30 PM Horse Committee 6:30 PM	10	11 Rabbit Project 6:30 PM	12
13	14	15	16 State Fair Evaluation Projects due 4:30 PM	17 Program Committee 6:30 PM Beef Committee 6:30 PM	18	19
20	21 Dairy Committee 6:30 PM	22	23 State Fair Starts 	24	25	26
27	28	29	30	31		

September

Sunday	Monday	Tuesday	Wednesday	Thursday	Friday	Saturday
					1	2
3	4 Labor Day  	5 Committee Chair Meeting 6:30 PM	6	7	8	9
10	11	12 Rabbit Project 6:30	13 Dog Project 6:30 Program Committee 6:30	14	15 	16
17	18 Rabbit Committee 7:00	19 Horse Committee 6:30	20 Dog Committee 7:00 Organizational Leader's Meeting 6:30	21 Sheep Committee 6:00 Hog Committee 6:30	22	23
24	24	25	26	27 Exhibition Poultry Committee 7:00	28	29
30	31					

Open Horse Show

Sunday, July 9th was our 2nd annual Open Gaming Show fundraiser for the 4-H Horse project. The weather held out and 4-Hers and adults alike had a great time running barrels, poles, and other gymkhana events. There was food, prizes, and smiles on everyone's faces.



4-H Committee Chair Meeting

Tuesday, September 5th
6:30pm at JCC Carnahan Center

Coming Soon...

4-H office available to public at JCC in Fredonia on Fridays. We hope to make this more convenient for our North County Residents!

4-H Organizational Leader's Meeting

Wednesday, September 20th
6:30pm at JCC Carnahan Center

Looking For More Committee Members!

The Chautauqua County 4-H Horse program is looking for more members to join their committee.

If you have any interest email Lindsey lc832@cornell.edu or call 716-664-9502 ext. 212

Want to volunteer for other committees? We are always looking for help. Please reach out to the 4-H office for more details!

State Fair Information

Information meeting will be held August 3rd @ 6:30PM at JCC. Projects will be taken to State Fair again this year to be evaluated, given special recognition and will be on display for the entire duration of State Fair. All selected projects must be in the 4-H office by August 16th packed and wrapped for shipping. We will not be responsible for any broken or damaged projects. Afterwards exhibits and ribbons can be picked up September 13th.



Program Committee

We will be looking for two new people to join program committee starting January 2024. Elections are this fall, if you have interest please reach out to the 4-H office for more information.

Enrollment

Mark your calendars!
Open enrollment starts October 1st.

Animal Youth!!!

Please do not forget to send your buyers and sponsors thank you notes!!

Record Books Due

September 15th.

Record Books submitted September 16th-29th will only be eligible for a red award and youth may not be eligible for year-end awards.

Absolutely NO RECORD BOOKS will be accepted after September 29th.

Submissions can be sent to Lindsey lc832@cornell.edu

DUE AUGUST 31ST FOR JUDGING

REQUIREMENTS:

- A SMALL LEFT CHEST LOGO
- A BACK DESIGN
- THE WORDS "CHAUTAUQUA COUNTY 4-H"
- A T-SHIRT COLOR PICKED OUT
- 4-H CLOVER
- A REPRESENTATION OF ALL OF 4-H

WINNER RECEIVES THEIR NAME ON THE BOTTOM OF THE DESIGN AND 1 APPAREL ITEM, FREE!



Chautauqua County Fair 2023



Animal Project News



Exhibition Poultry Project

Committee Meetings

Sept 27th
7:00 pm

Project Meetings

TBA

Committee Chair: Jamie Smith
smith_jamie@mac.com

4-H Program Committee

August 17th
September 13th

*ALL meeting are at 6:30 PM
unless otherwise noted



***STATE FAIR PROJECTS DUE**

AUGUST 16TH

***RECORD BOOKS DUE**

SEPTEMBER 15TH



Dog Project

Committee Meetings

Sept 20th
7:00 PM

Project Meetings

Sept 13th
6:30 PM

All Project Meetings at 6:30 PM

Any changes will be posted on
REMIND!

Committee Chair: Roxanne Young
roxy6825@windstream.net



Horse Project

Committee Meeting

August 9th
September 19th
6:30 PM

Project Meetings

TBA

Committee Chair: Kasey Fanara
blondieshort24@yahoo.com



Beef Project

Committee Meetings

August 17th

Project Meetings

*ALL meetings are at 6:30 unless
otherwise noted*

Committee Chair: Dave Schauman
janschauman@gmail.com

Sheep Project

Committee Meetings

September 21st
October 12th

Project Meetings

October 12th

*All committee meetings at 6pm and project
meetings at 7pm unless otherwise noted*

Committee Chair: Shawn Huntington
shuntington@randolphcsd.org



Rabbit Project

Committee Meeting

August 7th
Sept 18th
October 10th
7:00 pm

Project Meetings

August 11th
September 12th
October 23rd

*ALL project meetings at 6:30 unless
otherwise noted*

*Committees at 7:00 PM *

Committee Chair: Kim Chapman
kchapman4574@gmail.com

Market Poultry Project

Project Meetings

TBA



Committee Chair: Julie Covert
jcoverts@windstream.net

Hog Project



Committee Meeting

August 9th
September 21st

Project Meeting

TBA

*ALL meetings are at 6:30 PM unless
otherwise noted

Please note: One parent/guardian MUST
attend meetings with their 1st and 2nd year
members.

Committee Chair: Ken Styers
styersk@yahoo.com

Goat Project

Committee Meeting

TBA

Project Meetings

TBA

*ALL meetings are at 6:45 PM unless
otherwise noted*

Watch our Facebook page!

Contact: Keith LaRoy
716-485-1537



Dairy Project

Committee Meetings

August 21st
6:30 PM

Project Meetings

TBA

Committee Chair: Bart Nickerson
bjnick@windstream.net



How Timing Your Watering Can Make Your Harvest Sweeter

Faith Carlson, Master Gardener

Happy Gardening!

Who likes to bite into sour fruit? How was the first bite of your favorite fruit from your own garden? Was it what you expected? If you like to grow sweet fruit, here are a few tips to optimize that sweet flavor you are anticipating. Obtaining the results you want to achieve is an intentional watering schedule you customize for your garden. You can help your harvest be the sweetest it can be by watering less at the end of the growing process.

Fruits and vegetables have a combination of vitamins, aroma compounds and importantly, sugars to keep the growing process in motion. Sugar is moved to important areas of the plant by water. When the growing process is nearing the end, withholding water will hold the sugars in the flesh of the fruit. More water dilutes these flavors, and less watering enhances flavors and nutrients.

Our climate teaches us we need to conserve water but keeping your plants alive during our long hot summers and slowing our watering can be tricky. Cutting back on watering during the final days of ripening and the fruit approaches full size is the intended goal. Try to provide enough water to keep the leaves from completely wilting each time you water. Keep in mind that at the end of the growing and ripening process some of the older leaves on the plant will turn brown no matter the watering the plant received.

These tips will hopefully have the result of a sweet harvest to your liking!





EFNEP Newsletter

For more information about this and other County programs, call 716-664-9502 ext 221

Produced by Cornell Cooperative Extension August 2023

Enjoy Vegetarian Meals



There is no better time of the year than summer to start including one weekly vegetarian meal. The freshest and most flavorful vegetables are available during the summer growing months and summer is a great time to try a vegetable that is new to you and your family.

Try these ideas for going vegetarian one day a week:

- ⇒ Have a cold pasta or grain salad and add lots of different vegetables you enjoy. All vegetables fit in cold salads and it is your choice to choose what you love.
- ⇒ Add lots of different vegetables to pizza in place of pepperoni or sausage. Again, add your favorites. All that matters is that you enjoy the vegetables you choose.
- ⇒ Include beans at lunch and/or dinner. Add beans to a pasta, grain or lettuce salad (think chick peas or kidney beans). Replace chicken or beef in a taco or burrito with refried beans or black beans you season yourself. Cumin, oregano and coriander are tasty additions to beans.

Lots of variety in local vegetables and fruits available this month at your local farmers' market!

Look for these vegetables:

Lettuce, kale, collards, arugula
Yellow and green beans
Beets
Onions
Zucchini and yellow squash
Bell peppers
Broccoli and cabbage
Cucumbers
Eggplant
Potatoes
Basil, oregano, mint



Look for these fruits:

Apples
Peaches
Blueberries
Blackberries
Nectarines
Raspberries
Plums
Cantaloupe
Currants
Ground Cherries
Pears



EFNEP provides FREE nutrition education to income eligible families with children.

Are you eligible? Do you:

- have children who attend Early Head Start and/or Head Start?
- use your SNAP EBTcard to buy food?
- receive WIC?
- have children who eat free meals at school ?

EFNEP helps you make healthy food choices while saving money at the store.

Learn to:

- eat more fruits and vegetables and how to afford them
- drink fewer sugar sweetened beverages
- take control of your weight
- be more physically active

EFNEP offers a FREE series of hands-on, interactive, and supportive classes. Join us in-person for group classes or one-on-one visits, virtually by Zoom or by phone. Call to schedule your sessions today!

If you or your organization are interested in scheduling classes, please call your local nutrition educators:

Wendy Alexander
Cornell Cooperative Ext.
Jamestown
716-664-9502 ext. 221
wa66@cornell.edu

Ko Svetanics
Dunkirk
716-363-6575
kws75@cornell.edu

*This material was funded by the
USDA's
Expanded Food and Nutrition
Education Program.*

KORNER IDS

Continue adding to your list of books read this summer by borrowing "Spaghetti and Meatballs for All! A Mathematical Story" written by Marilyn Burns from the library. After reading the book with your child, have them help you make Pasta with Fresh Tomato Sauce using the recipe below.

Pasta with Fresh Tomato Sauce

Serves 8

Serving size 1/8th of the recipe

Ingredients

16 oz. dried pasta, preferably whole wheat
4 pounds tomatoes (Romas work best, but any variety will do)
¼ cup olive, canola, or vegetable oil
1 small onion, finely chopped
3 small cloves of garlic, minced
½ medium carrot, minced
1/3 stalk of celery, minced
Slivers of fresh basil, to finish



Directions

1. Cook pasta according to package directions; drain and set aside.
2. Bring a pot of water to boil. Place tomatoes in the water for 10-30 seconds, then rinse immediately under cold water. Peel the tomatoes.
3. Cut tomatoes lengthwise and remove the seeds. Chop the tomatoes coarsely.
4. Heat oil in a large pot over medium heat. Cook onions, carrots, celery, and garlic until just golden, about 10 minutes. Lower heat to medium-low. Add tomatoes and bring to a gentle simmer.
5. Simmer for 45 minutes, stirring occasionally.
6. Serve with pasta and chopped basil on top.

Nutrition facts for 1/8th of the recipe: 330 calories, g total fat, 1g saturated fat, 0g trans fat, 0mg cholesterol, 20mg sodium, 59g total carbohydrate, 11g dietary fiber, -g total sugars, -g added sugars, 12g protein, - Vitamin D, 6% calcium, 15% iron, - potassium 21% calories from fat

Source: Cornell Cooperative Extension Farmers' Market Nutrition Program

Cornell Cooperative Extension is an employer and educator recognized for valuing AA/EEO, Protected Veterans, and Individuals with Disabilities and provides equal program and employment opportunities.

The Chautauqua County Extension Connection (USPS#101-400) is published monthly by Cornell Cooperative Extension of Chautauqua County, JCC
Carnahan Center
525 Falconer Street, PO Box 20
Jamestown, NY 14702-9608.
Periodical Postage Paid at
Jamestown, NY 14701.

Cornell Cooperative Extension is Chautauqua County's link to Cornell University. Our purpose is to make available to the individuals, families, communities, and businesses of Chautauqua County the resources and research-generated knowledge of Cornell University. By identifying and addressing local needs, Cornell Cooperative Extension provides practical information to help people help themselves and develop their leadership potential. Please feel free to contact Cornell Cooperative Extension for more information.

*The "Extension Connection" is prepared by the CCE staff and is published monthly by Cornell Cooperative Extension - Chautauqua County. **If you have information for the "Extension Connection" it needs to be in the CCE office by the 10th of each month for the following month's issue.***

The views expressed in presentations made at CCE meetings or other CCE events are those of the speaker and not, necessarily, of CCE or its Board of Directors. Presentations at CCE events, or the presence of vendors at CCE events, do not constitute an endorsement of the vendor or speaker's views, products or services.

With regard to any information presented at any CCE event, CCE does not make any warranty, express or implied, including the warranties of merchantability and fitness for a particular purpose, and specifically disclaims any legal liability or responsibility for the accuracy, completeness, or usefulness of any information, apparatus, product, service or process presented and makes no representation that its use would not infringe upon privately owned or intellectual property rights such as Copyright, Trademark, Trade Dress etc.



specializing in farm & crop insurance
farm owners • commercial auto • crop insurance
agribusiness • umbrella • workers comp

Sherry B Coventry
Agricultural Insurance Account Executive
716926.8698
scoventry@evansagencyins.com

EVANS INSURANCE AGENCY

The presence of a commercial vendor at a CCE event, and the presentation by any vendor of any information regarding any specific commercial products, process, or service by trade name, trademark, manufacturer, or otherwise, does not constitute or imply CCE's endorsement, recommendation, or favoring of such item or organization.

Any such material presented by any vendor in any format, without limitation, is for informational purposes only. Any potential customer of any vendor, who is present at a CCE event, is expected to conduct their own due diligence and assessment of the vendor, product, or services as appropriate for their needs.

The information herein is supplied with the understanding that no discrimination is intended and no endorsement by Cornell Cooperative Extension is implied. Please contact the Cornell Cooperative Extension - Chautauqua County office if you have any special needs. Cornell Cooperative Extension of Chautauqua County is an Equal Opportunity Program and Employer.