

# Cornell Cooperative Extension of Chautauqua County's Extension Connection



Cornell Cooperative Extension  
Chautauqua County

August 2024  
Volume 9 - Issue 8



## IN THIS ISSUE

Board and Association News	3
Agriculture	4-12
4-H/Youth Development	13 - 16
Master Gardener	17
EFNEP ~ Building Healthy Habits (Expanded Food and Nutrition Education Program)	18-19

### Cornell Cooperative Extension of Chautauqua County Staff Contact Information

**Emily Reynolds**, CCE Executive Director  
eck47@cornell.edu  
716-664-9502 ext. 201

**Darcy Cramer**, Finance Associate  
dlc284@cornell.edu  
716-664-9502 ext. 208

**Lucia Conti**, Association Administrative Assistant  
lpc33@cornell.edu  
716-664-9502 ext. 209

**Lisa Kempisty**, Dairy/Livestock Community Educator  
ljk4@cornell.edu  
716-664-9502 ext. 203

**Josie Allen**, 4-H Development Educator  
jla298@cornell.edu  
716-664-9502 ext. 216

**Lisette Cabrera**, 4-H Program Coordinator  
lmc323@cornell.edu  
716-664-9502 ext. 214

**Molly Harvey**, SNAP Ed Nutrition Educator  
mmh273@cornell.edu  
716-664-9502 ext. 208

**Mary Ryder**, SNAP Ed Nutrition Educator  
mer262@cornell.edu  
716-664-9502 ext. 217

**Wendy Alexander**, EFNEP Nutrition Educator  
wa66@cornell.edu  
716-664-9502 ext. 221

**Shannon Rinow**, Master Gardener Volunteer Coordinator  
smr336@cornell.edu  
716-664-9502 ext. 224

**Linnea Haskin**, New York Food for New York Families  
lmc373@cornell.edu  
716-664-9502 ext. 210

**SWNY Dairy, Livestock, and Field Crops Program**  
CCE Chautauqua, @JCC Carnahan Center  
Jamestown, NY 14702  
716-640-0522  
kaw249@cornell.edu

**Lake Erie Regional Grape Program**  
6592 W. Main Road  
Portland, New York 14769  
716-792-2800

**Cornell Vegetable Program**  
480 North Main Street  
Canandaigua, NY 14424  
585-394-3977 ext. 426

**CCE - Chautauqua County**  
@ JCC Carnahan Center  
525 Falconer St. PO Box 20  
Jamestown, NY 14702-0020  
Phone: 716-664-9502 Fax: 716-664-6327  
[www.cce.cornell.edu/chautauqua](http://www.cce.cornell.edu/chautauqua)

### COVER PHOTO: Memories of the 2024 Chautauqua County Fair

**Your picture could be on our next cover!**

Send your submission to [lpc33@cornell.edu](mailto:lpc33@cornell.edu)

#### The Chautauqua County Extension Connection (USPS #101-400)

The Chautauqua County Extension Connection (USPS#101-400) is published monthly by Cornell Cooperative Extension of Chautauqua County. Subscription included in minimum of \$65 Program Participation fee. Periodical Postage Paid at Jamestown, NY 14701. "POSTMASTER: Send address changes to the: Chautauqua County Extension Connection at 525 Falconer St. JCC Carnahan Center, PO Box 20 Jamestown, NY 14702-0020."

# Association News

## Board of Directors

Randolph (Randy) Henderson - President  
 Alyssa Porter - Vice President  
 George Haffenden - Treasurer  
 Chad Buck - Secretary  
 Suzanne Fasett-Wright  
 Pat Walker  
 Louis Smith  
 Camille Martir Rosado  
 Dawn Betts  
 Dan Heitzenrater  
 Jessica Brehm  
 Sue Lindsey  
 Emma Boutelle  
 Fred Johnson—County Legislator  
 Dinah Hovey, Master Gardener Rep  
 Tom Nelson, County Legislator  
 Renee Mooneyham - Extension Specialist

## Agriculture Program Committee

Derek Yericco, Dunkirk  
 Rosemary Joy, Fredonia  
 Mike Wilson, Silver Creek  
 Katelyn Card-Allen, Jamestown  
 Jessica Brehm, Falconer  
 Ben Nickerson, Sherman  
 Virginia (Ginny) Carlberg, Jamestown  
 Emma Boutelle, Kennedy  
 Andrew Campbell, Westfield

## 4-H Program Committee

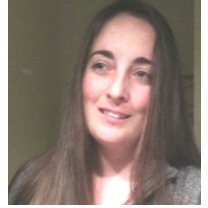
Mary Jantzi, Clymer  
 Betty Catanese, Stockton  
 Louis Smith, Silver Creek  
 Laura LeBarron, Silver Creek  
 Jan Schauman, Jamestown  
 Keith LaRoy, Kennedy  
 Sue Lindsey, Ashville  
 Lindsay Eckman, Frewsburg  
 Taylor Young, Panama

## 4-H Program Advisory Chairpersons

Joyce Edwards	Clothing and Textiles
Bart Nickerson	Dairy
Keith LaRoy	Goat
Roxanne Young	Dog
David Schauman	Beef, Meat Animal Sale
Kasey Fanara	Horse
Marie Warner	Snack Bar
Jamie Smith	Exhibition Poultry
Julie Covert	Market Poultry
Kim Chapman	Rabbit
Louis Smith	Hog
Shawn Huntington	Sheep

## From the Office of the Executive Director

We hope you were all able to join us for the Chautauqua County Fair. I missed having Lindsey Crisanti-Meeder with us, but as many of you know she resigned in June and will be teaching Agricultural Education at Cassadaga High School this fall. We are very excited for her as she steps into a new chapter in her career. A special thank you goes out to all our volunteers and CCE staff that helped make this fair a success. It was heartwarming to see familiar faces, and the quality of animals that our families have been raising. The sewing and domestic projects were exceptional and the friendships, both youth and adult, made it all priceless. It was also a fantastic opportunity for 4-H staff, volunteers, parents, and youth to enjoy and reflect, but also to learn. And I mean learn beyond showing animals and presenting a sewing project, but truly learn about our own behaviors, our appreciation for opportunities and how we can grow from our experiences and make the 2025 program year even better. If you attended the Fair, we would love to hear your feedback. Please email us and let me know what you liked, disliked, or would like to see in 2025, [chautauqua4h@cornell.edu](mailto:chautauqua4h@cornell.edu). To all our sponsors and supporters, a simple thank you will never mean as much as your support has to us. We sincerely appreciate you helping us keep 4-H thriving in Chautauqua County.



Although July is a month to celebrate 4-H, it does not overshadow the great work happening in our Agricultural and Nutrition Programs. If you have a garden or grow cucurbits (cucumbers especially) be on the look out for downy mildew. Please be on the lookout and report suspicious cases to our Master Gardeners, [chautauquamg@cornell.edu](mailto:chautauquamg@cornell.edu). There is also a great lineup of Chautauqua L.E.A.F. (Learn, Empower, Achieve, Farm) workshops available this fall, be sure to check them all out and invite your friends.

This July we also had to say farewell to Rose Clarke, our former Agricultural Program Coordinator. Rose and her family are pursuing new adventures on the West coast. If you have considered working with CCE now may be a good time to keep an eye on our website, under the jobs section. We are currently reviewing all our positions with the help and support of WNY Foundation, Savvy Solutions and Mike Cardus Consultations. We hope to have a plan in place soon and will have new positions posted that will help CCE Chautauqua thrive into the future.



## Gallagher

Insurance | Risk Management | Consulting

**Sherry B. Coventry**  
Client Service Manager, Senior

Sherry\_Coventry@ajg.com  
P - 716.926.8698

6460 Main Street  
Williamsville, NY 14221  
United States

[ajg.com](http://ajg.com)



# Chautauqua County Agricultural News

## Grain Bin Safety and Rescue Training to be held in Mayville, NY

By Lisa Kempisty, Cornell Cooperative Extension Educator, Dairy/Livestock



*National Education Center for Agricultural Safety Grain Bin Rescue Training Equipment*

### Did you know these Startling Facts: Injuries & Fatalities from grain bins

\* Sources: Summary of U.S. Agricultural Confined Space-Related Injuries and Fatalities; Purdue University

- In 2022, at least 42 grain entrapments were reported, the highest number of entrapments in a decade (a 44.8% increase from 2021). There were 15 fatalities.
- In four seconds, an adult can sink knee-deep in flowing grain and be rendered unable to free themselves without assistance. In just 20 seconds, an adult can be fully engulfed.
- Suffocation from engulfment or oxygen-deficient atmospheres is the leading cause of death in grain accidents.
- More than 300 grain entrapments have been recorded in the past decade. It is estimated an additional 30% of cases go unreported.

Since 2014, Nationwide and partners have awarded 332 grain rescue tubes to first responders across 32 states – eclipsing over \$1 million in resources provided. At least ten successful rescues have utilized these resources, including the recent rescues in Arkansas and Indiana. Nationwide collaborates each year with the National Education Center for Agricultural Safety (NECAS) to deliver the rescue equipment and provide safety training.

The Chautauqua County Office of Emergency Services and Chautauqua County Farm Bureau cooperatively applied for and have recently been selected to receive specialized rescue training and equipment needed to respond to a grain

entrapment incident in Chautauqua County and nearby areas. The new equipment will be awarded and demonstrated at this safety and rescue program.

**Farm owners and their families, farm employees, grain handlers, fire department personnel, and first responders are welcome to participate in a grain bin rescue training, which will also include safety tips working with grain bins. This educational program will be held on Thursday, August 22<sup>nd</sup> beginning at 6:00 pm at the Chautauqua County Emergency Office, 2 Academy Street, Mayville, NY. Anyone interested in learning more to prevent and help save lives in grain entrapment accidents is welcome to attend. We do request participants to be at least 16 years of age, due to liability considerations.**

Jim Joy, Grape Grower and Chautauqua County Farm Bureau Board Member stated: “This grain bin rescue training and specialized equipment grant is the result of dedicated teamwork between the Chautauqua County Special Rescue Team and Chautauqua County Farm Bureau. These combined efforts now provide our county special rescue team members the ability to respond with confidence and knowledge to any grain bin rescue operation in Chautauqua County and surrounding areas.”

If you have any questions regarding this training, please contact Jim Joy at 716-467-4200.

The program instructor will be Brian Freese, B.A., NR-Paramedic, Fire Instructor 2, NECAS Safety and Rescue Instructor, from Peosta, Iowa. Thanks to local grain producers who will provide the grain and loading equipment for the demonstration. There is no charge to participate, and complimentary pizza and beverages will be provided to all participants by the Chautauqua County Office of Emergency Services.

To help plan for meeting materials and food, please RSVP by August 20<sup>th</sup>, by contacting Lisa Kempisty, Extension Educator, at 716-664-9502 Ext 203 or by email: [ljk4@cornell.edu](mailto:ljk4@cornell.edu).



*Photo credit: Nationwide Article “Grain Bin Safety Week 2024”*



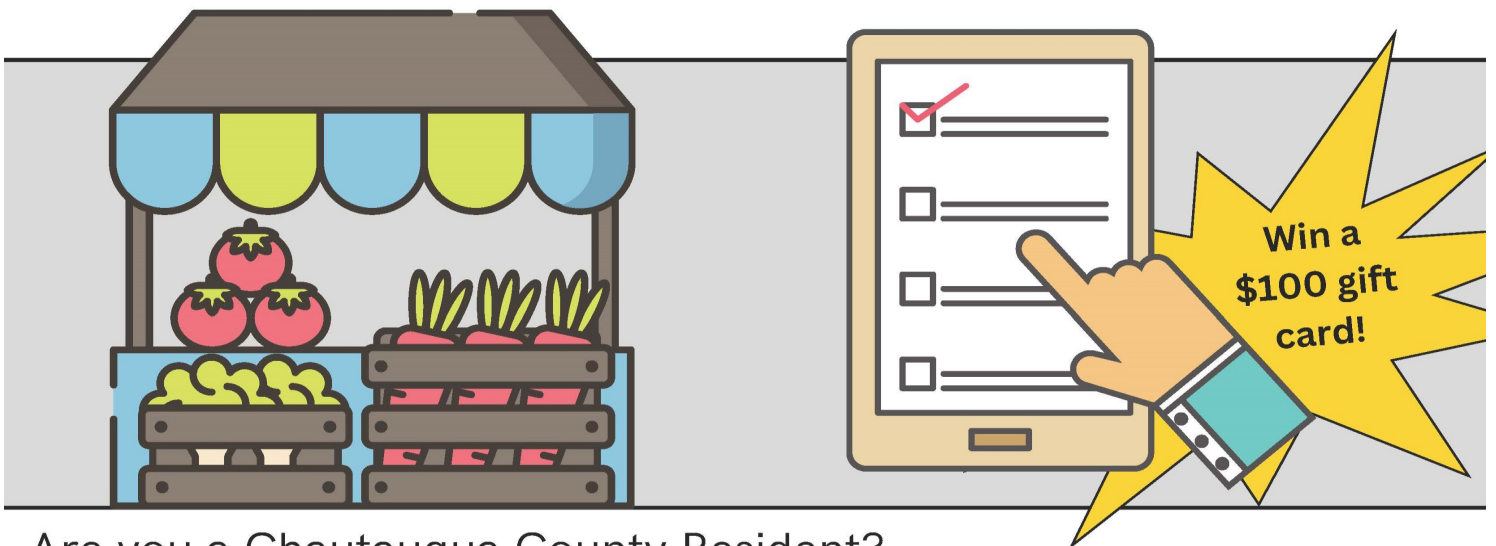
# FOOD ACCESS SURVEY

Cornell Cooperative Extension | Chautauqua County

SCAN THE QR CODE  
WITH YOUR PHONE  
CAMERA TO ACCESS  
THE SURVEY



OR VISIT  
[HTTPS://CORNELL.CA1.Q  
UALTRICS.COM/JFE/FO  
RM/SV\\_1YWVVCWEJ3CC  
YWC](https://cornell.ca1.qualtrics.com/jfe/form/sv_1ywwvcwej3ccywc)



Are you a Chautauqua County Resident?  
Please help us learn more about food access  
needs within our community by participating  
in our free online survey.

Share your name or contact information  
(optional) and enter to win a FREE \$100 gift  
card from Brigiotta's Farmland Produce &  
Garden Center in celebration of their 100th  
anniversary!



*This program is funded by the USDA New York Food for New York Families and USDA Supplemental Nutrition Assistance Program (SNAP). Cornell Cooperative Extension provides equal program and employment opportunities. Please contact the Cornell Cooperative Extension of Chautauqua County office if you have any special needs.*



Towns of Busti, Carroll, Chautauqua, Ellery,  
Ellicott, Kiantone, Poland, & Stockton

Submit requests to **add** predominately  
agricultural land or **remove** land  
from August 1<sup>st</sup> to August 31<sup>st</sup>.

The Agricultural District 8 Review Worksheet, current  
Agricultural District Maps, and additional information can  
be found at: [bit.ly/CHQagdistrict](https://bit.ly/CHQagdistrict).

For more information on Chautauqua County's  
Agricultural Districts please contact:

Lauren Sharp, Junior Planner  
Chautauqua County  
Department of Planning & Development  
201 West Third Street Suite 115  
Jamestown, New York 14701  
Phone: (716) 661-8245  
Email: [sharp1@chqgov.com](mailto:sharp1@chqgov.com)

# A SMART CHOICE

Choosing the right insurance is about more than just getting  
the quickest quote. For more than a century, **AMERICAN  
NATIONAL** has provided reliable service and knowledgeable  
advice from local agents who take the time to listen and  
understand your unique needs.



**GEORGE HAFFENDEN** LUTCF  
AGENT

716.386.5393

[ghaffenden@American-National.com](mailto:ghaffenden@American-National.com)

PO Box 300 Strykersville, NY 14145

<https://an.insure/georgehaffenden>

Products and services may not be available in all states. Terms, conditions and eligibility requirements will apply.  
Life insurance and annuity products underwritten by American National Life Insurance Company of New York,  
Glenmont, New York. Property and casualty products and services may be underwritten by Farm Family Casualty  
Insurance Company or United Farm Family Insurance Company, both of Glenmont, New York.

License 000000

14-065.87136.V4.03.20



## TAX PLANNING BUILT TO SAVE YOU MONEY.



**Our ag tax specialists deliver money-saving strategies.**

The taxes you owe don't have to be a surprise – at least not with a defined  
tax strategy from Farm Credit East. Our ag tax specialists can work with you  
to develop a tax strategy that minimizes the taxes you pay. Contact the tax  
specialists at Farm Credit East for a plan that works for you.

[farmcrediteast.com](http://farmcrediteast.com) | 800.929.2144



- Loans & Leases
- Financial Record-Keeping
- Payroll Services
- Profitability Consulting
- Tax Preparation & Planning
- Appraisals
- Estate Planning
- Beginning Farmer Programs
- Crop Insurance





## Receive a Free Energy Audit or Greenhouse Benchmarking Report to Help Reduce Operational Costs

NYSERDA offers free energy audits to help eligible farms identify ways to save energy and money on utility bills. Reports include recommendations for energy efficiency measures. In addition, NYSERDA developed a New York State Greenhouse database and benchmarking tool. Through the program, greenhouse facilities can receive a free report that describes their energy use intensity and benchmarks their facility against an anonymous aggregate of peer facilities.

### Energy Audit Options

You can request the level of energy audit that best fits your farm’s needs. NYSERDA will assign a Flexible Technical Assistance Program Consultant to visit your farm and perform an energy audit at no cost to you.

Level	Audit Activities	Type of Report that the Farm Receives
Comprehensive	Detailed energy audit	Energy audit report with calculated evaluations of appropriate energy efficiency measures including simple payback: meets ANSI/ASABE S612 standards
Targeted	Energy Audit focused on specific systems, energy efficiency measures, or renewable energy	System-specific energy analysis report

### Greenhouse Benchmarking

A grower can request a greenhouse benchmark report. NYSERDA will assign a FlexTech Program Consultant to visit your facility, collect data, and enter it into the State’s greenhouse database and benchmarking tool to generate the report. There will be no cost to the greenhouse facility for this service.

### Eligibility

Eligible farms include but are not limited to dairies, orchards, greenhouses, vegetables, vineyards, grain, and poultry/egg. The farms must also be customers of New York State investor-owned utilities and contribute to the System Benefits Charge (SBC). Please check your farm’s current electric bills to see if your farm pays the SBC.

### Receive free REAP grant application assistance for energy efficiency project funding

The REAP Technical Assistance Program (RTAP) assists New York State farmers in applying to the Rural Energy for America Program (REAP). This assistance is at no cost to the farm. Through RTAP, farmers will receive hands-on assistance with updates to energy audits, completing REAP grant applications to apply for project funding, and assembling required supporting documentation. Investments toward energy efficiency help ensure the long-term sustainability and viability of New York State farms and helps meet New York States’ and the United States’ climate goals. Program Guidelines This is a first come, first served Statewide program. Assistance is available through September 30, 2026, while funds last. Applicant must:

- Be a New York State agricultural producer or rural business.
- Not have outstanding delinquent federal taxes, debt, judgment, or debarments.
- Have at least 50 percent of gross revenue or receipts coming from agricultural operations or be considered a rural small business.
- Provide a qualified energy audit that has been completed within the last two years.
- Provide most recent utility and energy bills for the farm. Energy bills include electricity, propane, natural gas, heating oil, wood, or any other fuel that drives stationary equipment.

For more information, visit [nyserdera.ny.gov/agriculture](http://nyserdera.ny.gov/agriculture) or call 1-800-732-1399. These programs are facilitated by NYSERDA & USDA. **If you need additional information on Energy Efficiency guidance and funding opportunities for your agricultural business, please contact Lisa Kempisty, Cornell Cooperative Extension Educator and local contact for the Ag Energy NY program: 716-664-9502 Ext 203 or [lj4@cornell.edu](mailto:lj4@cornell.edu).** You can also find information and request assistance on the Ag Energy NY website at [agenergyny.org](http://agenergyny.org).



## The Chautauqua County Holstein Club hosted the 76th Annual Holstein Show on Saturday, July 20, 2024 at the Chautauqua County Fairgrounds in Dunkirk, New York.

Mr. Darin Hill of Cattaraugus, New York was the official judge for the day with 88 head of cattle shown and 24 group classes. Show Committee members were Nichelle and Lona Carlberg, Co-Chairs, Dennis Carlberg, Randy Wiltsie, Bill Kane, Nicholas Yotopolis, Larry Brown, Andy Miller and Anna Crowell.

After the Junior Best Three Females class, President Nicholas Yotopolis and club member Onnolee Lind presented Nichelle and Lona Carlberg with gifts for being Chairpersons for the Club's annual show for over 25 years.

**JUNIOR HEIFER CALF - Sr. Show - 1)** RO-MA-ME FC Dixie, Grace Meyer, Springville; 2) Reliance TS Lamborgini-ET, Reliance Dairy, Sherman; 3) Southern Tier Penelope Box-ET, Patrick Sweatman, Brandon & Madison Nickerson and Micheal Delcamp, Panama. **Jr. Show - 1)** RO-MA-ME FC Dixie, Grace Meyer, Springville; 2) MS Altitude Callie-Red-ET, Maecee Nickerson, Clymer; 3) Country Ayre Stngr Dngr-Red, Evie Woodis, Dewittville.

**INTERMEDIATE HEIFER CALF - Sr. Show - 1)** Liddleholme Reign-Red-ET, Cole Nickerson, Corry; 2) Cherry H-SA Remedy-Red, Larry & Beanie Hill and Jack Moore, Falconer; 3) Reliance Lucy-ET, Reliance Dairy, Sherman. **Jr. Show - 1)** Liddleholme Reign-Red-ET, Cole Nickerson, Corry; 2) Country Ayre Uncorked-Red, Evie Woodis, Dewittville; 3) Green Banks Rebel 9280-Red "Marachino", Ana Frederes, Falconer.

**SENIOR HEIFER CALF - Sr. Show - 1)** Brandt View Pernal Cosmo-ET, Reliance Dairy, Clymer; 2) Reliance Sidekick Kiara, Maecee Nickerson, Clymer; 3) Green Banks Moovin 9211 "Aria", Ana Frederes, Falconer. **Jr. Show - 1)** Reliance Sidekick Kiara, Maecee Nickerson, Clymer; 2) Green Banks Moovin 9211 "Aria", Ana Frederes, Falconer; 3) Saxton-Hill ST Best Yet, Evan Mierzwa, Cassadaga.

**SUMMER YEARLING HEIFER - Sr. Show - 1)** Brandt View Pernal Camila-ET, Reliance Dairy, Sherman; 2) Brandt View Pernal Cacti-ET, Collin Crawford, Clymer; 3) Plum Line Warrior Militia, Larry & Beanie Hill and Jack Moore, Falconer. **Jr. Show - 1)** Brandt View Pernal Cacti-ET, Collin Crawford, Clymer; 2) Country Ayre Dempsey Diane, Evie Woodis, Dewittville.

**JUNIOR YEARLING HEIFER - Sr. Show - 1)** Reliance Alleyoop Force, Emmersen Crawford, Clymer; 2) Yotopolis Hold the Legacy, Nicholas Yotopolis, Clymer; 3) Falcon-Crest Warrior Blair, Laine Carpenter, Falconer. **Jr. Show - 1)** Reliance Alleyoop Force, Emmersen Crawford, Clymer; 2) Falcon-Crest Warrior Blair, Laine Carpenter, Falconer; 3) Mid Knight Rompen Garnet, Elizabeth Jones, Frewsburg.

**INTERMEDIATE YEARLING HEIFER - Sr. Show & Jr. Show - 1)** Reliance Analyst Lilac RC, Liam Nickerson, Sherman; 2) Red Carpet RT Side of It-ET, Emmersen Crawford, Clymer; **Sr. Show - 3)** MS Halocrest Warr Crystalyn, Howard Ivett & Country Ayre Farm, S. Dayton.

**SENIOR YEARLING HEIFER - Sr. Show & Jr. Show - 1)** Rocky Top JN Warrior Tia-ET, Liam Nickerson, Sherman; 2) Saxton Hill Lifetime, Violet Walker, Dunkirk.

**Sr. Show - JUNIOR CHAMPION** - Liddleholme Reign-Red-ET, Cole Nickerson, Corry;

**RESERVE JUNIOR CHAMPION** - Brandt View Pernal Cosmo-ET, Reliance Dairy, Sherman;



Photos are the courtesy of Arissa Hitchcock, "A Beautiful Glimpse".

Tim Nickerson of Reliance Dairy with Brandt View Pernal Camila-ET - Honorable Mention Jr. Champion of the Sr. Show; Brandon Nickerson of Reliance Dairy with Brandt View Pernal Cosmo-ET - Reserve Jr. Champion of the Sr. Show; Cole Nickerson with Liddleholme Reign-Red-ET - Junior Champion of the Sr. and Youth Show and Best Red and White under 2 year old; and Judge Darin Hill



**BEST BRED & OWNED UNDER 2 YEARS OLD** - Reliance Lucy-ET, Reliance Dairy, Sherman;

**BEST RED & WHITE UNDER 2 YEARS OLD** - Liddleholme Reign-Red-ET, Cole Nickerson, Corry

**Jr. Show - JUNIOR CHAMPION** - Liddleholme Reign-Red-ET, Cole Nickerson, Corry;

**RESERVE JUNIOR CHAMPION** - Reliance Alleyoop Force, Emmersen Crawford, Clymer.

**JUNIOR BEST THREE FEMALES - Sr. Show - 1)** Reliance Dairy, Sherman; 2) Denise Saxton, Cassadaga; 3) Nicholas Yotpolis, Clymer; **Jr. Show - 1)** Carlberg Farm, Jamestown.

**JUNIOR TWO YEAR OLD - Sr. Show - 1) & 1st Best Udder & Production** - Country Ayre Parsly 7239, Country Ayre, Dewittville; 2) & 2nd Best Udder, NHW Jordy Mystic, Larry & Beanie Hill and Dylan Neckers, Falconer; 3) Reliance Redeye Style-Red, Brandon Nickerson, Sherman. **Jr. Show - 1)** Reliance Analyst Chicago, Collin Crawford, Clymer; 2) Meadowlark Defiant Matilda-Red, Ava Burrige, Cassadaga; 3) Eminent Hancock 617, Anna Carlberg, Jamestown.

**SENIOR TWO YEAR OLD - Sr. Show - 1) & 1st Best** Country Ayre Hanans 7094, Country Ayre, Dewittville; 2) & 2nd Best Udder, Petitclerc Devour Francy, Reliance Dairy, Sherman; 3) MS Sidekick Hoppie, Larry & Beanie Hill and Dylan Neckers, Falconer. **Production Winner** - Country Ayre Analyst 7084, Country Ayre, Dewittville. **Jr. Show - 1)** Reliance Hancock 10803, Liam Nickerson, Sherman.

**JUNIOR THREE YEAR OLD - Sr. Show - 1) & 1st Best Udder**, A-Logansway Select Beverage, Collin Crawford, Clymer; 2) & 2nd Best Udder, Yotpolis Unix TGIF, Nicholas Yotpolis, Clymer; 3) NHW Crushable Mariberry, Larry & Beanie Hill and Dylan Neckers, Falconer;. **Jr. Show - 1)** A-Logansway Select Beverage, Collin Crawford, Clymer; 2) & **Production Winner** - Eminent Reeve Baby-Red, Anna Carlberg, Jamestown.

**SENIOR THREE YEAR OLD - Sr. Show - 1) & 1st Best Udder & Production Winner**, Country Ayre Hancock 6666, Lily Woodis, Dewittville; 2) & 2nd Best Udder, Petitclerc Awesome Emy-ET, Reliance Dairy, Sherman; 3) NHW Tattoo ASAP, Larry & Beanie Hill and Dylan Neckers. **Jr. Show - 1)** Country Ayre Hancock 6666, Lily Woodis, Dewittville; 2) Lamjan King Doc Fifi Fofum, Dayne Jantzi, Clymer.

**Sr. Show - INTERMEDIATE CHAMPION FEMALE** - Country Ayre Parsly 7239, Country Ayre, Dewittville.

**RESERVE INTERMEDIATE CHAMPION** - Country Ayre Hancock 6666.

**Jr. Show - INTERMEDIATE CHAMPION FEMALE** - A-Logansway Select Beverage, Collin Crawford, Clymer.

**RESERVE INTERMEDIATE CHAMPION** - Country Ayre Hancock 6666, Lily Woodis, Dewittville.

**FOUR YEAR OLD - Sr. Show - 1) & 1st Best Udder** - Laspada Awesome Allie-Red, Reliance Dairy, Sherman 2) & 2nd Best Udder & **Production Winner** - MS-Warrior Ace, Logan Swan, Sherman; 3) NHW Altitude Disk-Red, Larry & Beanie Hill & Dylan Neckers, Falconer. **Jr. Show** - MS-Warrior Ace, Logan Swan, Sherman.

**FIVE YEAR OLD - Sr. Show & Jr. Show - 1) & 1st Best Udder**, Day Dream Unix Cherry Coke, Miranda Nickerson, Corry; 2) & 2nd Best Udder & **Production Winner**, Day Dream Penthouse Lainey, Cole Nickerson, Corry. **Sr. Show - 3)** Reliance H Nirann Lallie, Larry & Beanie Hill and Dylan Neckers, Falconer.

**AGED COW - Sr. Show - 1) & 1st Best Udder & Production Winner** - OCD Fitz Macy - ET, Falcon-Crest Holsteins, Frewsburg.

**SENIOR CHAMPION - Sr. Show** - Laspada Awesome Allie-Red, Reliance Dairy, Sherman;

**RESERVE SENIOR CHAMPION** - Day Dream Unix Cherry Coke, Miranda Nickerson, Corry.

**GRAND CHAMPION** - Country Ayre Parsly 7239, Country Ayre, Dewittville;

**RESERVE GRAND CHAMPION** - Laspada Awesome Allie-Red, Reliance Dairy Sherman.

**BEST BRED & OWNED OF SHOW** - Country Ayre Parsly 7239, Country Ayre, Dewittville.

**CHAMPION UDDER** - Laspada Awesome Allie-Red, Reliance Dairy, Sherman.

**SENIOR CHAMPION & GRAND CHAMPION - Jr. Show** - Day Dream Unix Cherry Coke, Miranda Nickerson, Corry.

**RESERVE SENIOR CHAMPION** - Day Dream Penthouse  
Lainey, Cole Nickerson, Corry.

**RESERVE GRAND CHAMPION** - A-Logansway Select  
Beverage, Collin Crawford, Clymer.

**BEST BRED & OWNED OF YOUTH SHOW** - Reliance  
Sidekick Kiara, Maecee Nickerson, Clymer.

**BEST RED & WHITE OF SHOW** - Laspada Awesome Allie-  
Red, Reliance Dairy, Sherman.

**PRODUCE OF DAM - Sr. Show** - 1) Nicholas Yotpolis,  
Clymer; 2) Reliance Dairy, Sherman; 3) Denise Saxton,  
Cassadaga. **Jr. Show** - 1) Laine Carpenter, Falconer.

**DAM AND DAUGHTER - Sr. Show** - 1) Nicholas Yotpolis,  
Clymer; 2) Falcon-Crest Holsteins, Frewsburg; 3) Nicholas  
Yotpolis, Clymer. **Jr. Show** - 1) Laine Carpenter, Falconer.

**BEST 3 FEMALES - Sr. Show** - 1) Country Ayre, Dewittville;  
2) Larry & Beanie Hill, Falconer; 3) Reliance Dairy,  
Sherman. **Jr. Show** - 1) Laine Carpenter, Falconer.

**EXHIBITOR'S HERD - Sr. Show** - 1) Country Ayre,  
Dewittville; 2) Reliance Dairy, Sherman; 3) Larry & Beanie  
Hill, Falconer; **Jr. Show** - 1) Carlberg Farm, Jamestown.

**PREMIER BREEDER** - Country Ayre, Dewittville; **PREMIER  
EXHIBITOR** - Reliance Dairy, Sherman.

The Committee would like to thank all of the sponsors for this show: Wall Street Dairy, LLC; Cargill Feed & Nutrition; Gay Mark Tire & Wheel; Ormond Farm; Dairy One; Great Lakes Insurance Services Group; IBA; Larry Brown; Erika Huyck, DVM; Barney's Hoof Trimming; LandPro Equipment LLC; Southern Tier AI Services; Westfield Ag & Turf; Betty Crowell; Green Banks Farm; 3 C's Catering & The Falcon's Nest Banquet Hall; A. R. Timmel Farm Equipment; Halocrest Holsteins; Carlberg Farm Livestock and Produce; Country Ayre Farm; Cline Crest Farm; Gold Star Feed and Grain LLC; Growmark; Falcon-Crest Holsteins; Alliance Advisory Group; Kanecrest Farm; John Wiggers and Son, Inc.; Harry Austin Milling; NYP; Farm Credit; Steamburg Milk Producers Coop.; Lictus Keystone, Inc.; Animal Hospital of Waterford; The Forage Source, LLC; Rodgers & Sons, Inc. Lake Shore Paving, Inc., Attica Veterinary Associates, PC; Perry Veterinary Clinic and DFA. Also, thank you to Arissa Hitchcock for her photography of the show: "A Beautiful Glimpse".



Photos are the courtesy of Arissa Hitchcock, "A Beautiful Glimpse".

Miranda Nickerson with Day Dream Unix Cherry Coke - Sr. Champion and Grand Champion of Youth Show and Reserve Sr. Champion of the Senior Show; Liam Nickerson of Reliance Dairy with Laspada Awesome Allie Red, Sr. Champion, Reserve Grand Champion, Champion Udder of Show and Best Red and White of Sr. Show; Madison Nickerson of Country Ayre with Country Ayre Parsly 7239 - Grand Champion and Best and Bred of Sr. Show; Judge Darin Hill.



## LARRY ROMANCE & SON, INC.

Parts - Sales - Service

***Come see us for all your Vineyard - Dairy - Construction & Consumers Needs***

SHERIDAN, NY • 2769 ROUTE 20  
(716) 679-3366 • tractorsales@netsync.net

ARCADE, NY • 543 W. MAIN ST.  
(585) 492-3810

[www.larryromanceandson.com](http://www.larryromanceandson.com)



# “Got fresh cows? Get Comfort!”

## Fresh starts pay back bigtime



Cow comfort is more important than ever in today's times of tight milk margins and reduced numbers of dairy replacement cattle. Protect your cattle investments and capitalize on them. Help your herd reach its genetic potential with fresh starts that pay back dividends. Nothing impacts cash flow like problem-free lactations and smooth heifer transitions. Got fresh cows? Get Comfort... with Udder Comfort!™

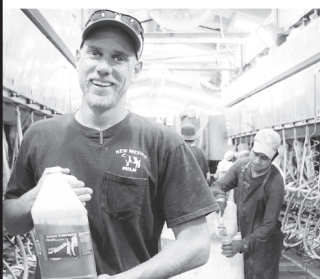


“We love how easy it is to do this. We use Udder Comfort after each milking for 5 to 7 days after calving to remove swelling. This gets udders softer faster for more milk. We saw better first-lactation performance in our 2-year-olds with a 3 to 4 pound production increase at 14 DIM, and a reduced SCC for the group,” Keith relates.



“Soft, comfortable udders that milk out quickly and completely have a big impact on milk quality and performance,” says Erik Hagedoorn, managing one of two Bos Dairies locations near Lovington,

New Mexico, milking 5400 Jersey cross cattle, and calving well over 30 animals daily.



“We rely on Udder Comfort for routine use in our hospital groups and for our fresh cows at the start of lactation. When outdoor conditions decline, we increase our preventive use. It works like a charm,” Erik explains.

At Beer Cattle Co., Berne, Indiana, calving over 250 heifers monthly, Keith Beer also sees the benefits of Udder Comfort at the start of lactation.

## UDDER COMFORT™ Quality Udders Make Quality Milk

**Her Comfort is Our Passion!**

Softer udders ⇨ Faster milking  
Better quality ⇨ **MORE MILK**

1.888.773.7153  
uddercomfort.com

50

Helping reach their  
potential since 1998!



For external application to the udder only, after milking, as an essential component of udder management. Wash and dry teats thoroughly before milking.

# STOCKMANSHIP STEWARDSHIP

2024

**October 25 - 26th**

Hamburg, NY

**Join us for an outstanding two day event sponsored by Neogen!**

- Hear from world renowned stockmanship clinicians and other industry experts.
- Session highlights include chute-side trainings, herd health planning, cattle handling, and a chance to get BQA certified!
- Full registration includes all events and meals, student pricing and one-day registration options available!

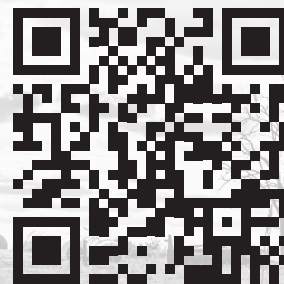
#### FRIDAY, OCTOBER 25TH

- Breakout sessions covering biosecurity, nutrition, and industry hot topics, including an update from Certified Angus Beef
- Live cattle handling demonstrations

#### SATURDAY, OCTOBER 26TH

- BQA Certification and industry updates
- Classroom demonstrations

**REGISTER TODAY!**



[stockmanshipandstewardship.org](http://stockmanshipandstewardship.org)


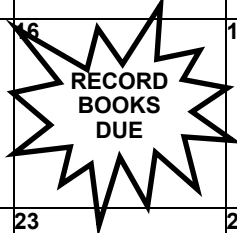




# August

Sunday	Monday	Tuesday	Wednesday	Thursday	Friday	Saturday
				1 Dairy Committee 6:30 PM	2	3
4	5 Rabbit Project 6:30 PM	6	7	8 Beef Committee 6:30 PM	9	10
11	12 State Fair Projects Due to 4-H Office	13 Horse Committee 6:30 PM	14	15 4-H Program Committee 7:00 PM	16	17
18	19 Exhibition Poultry Committee 6:45 PM	20	21 State Fair Starts 	22	23	24
25	26 Goat Committee 6:45 PM	27	28	29	30	31

# September

Sunday	Monday	Tuesday	Wednesday	Thursday	Friday	Saturday
1	2 Labor Day 	3	4	5	6	7
8	9 Market Poultry Project 6:30 PM	10	11 Dog Project 6:30 PM	12 Rabbit Project 6:30 PM	13	14
15	16 	17	18 Beef Committee 6:30 PM Dog Committee 6:30 PM Hog Committee 6:00 PM	19 Committee Chair Meeting 6:30 PM	20	21
22	23 Goat Committee Record Review 6:45 PM	24 Exhibition Poultry Committee 6:45 PM	25	26 Rabbit Committee 7:00 PM	27	28
29	30 Organizational Leader's Meeting 6:30 PM	31				

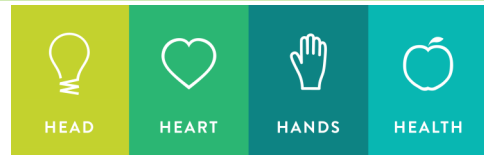


## 4-H Teen Ambassadors

We appreciate the hard work and dedication of our 4-H Teen Ambassadors throughout the entire 4-H year and for their extra efforts during the Chautauqua County Fair!

Thank you to Abigail Carlberg, Addison Damcott, Kendall Eckman, Logan Ellsworth, Kamryn Harper, Kiley Jones, Everett LeBarron, Jaidyn Newhouse, Madalyn Reading and Ava Valone!

County 4-H Teen Ambassadors participated in the Grand Opening of the Fair, along with several VIP guests of honor, pictured here with NYS Senator George Borrello who is a long time supporter of Chautauqua County 4-H.



Thank you to all of our dedicated parents and volunteers that helped make the 2024 Chautauqua County Fair a success for our 4-H youth. Whether you are helping in the barns, 4-H Building, Snack Bar or behind the scenes, we are truly grateful for all you do. We appreciate the dedication and commitment of our parents and volunteers as they graciously offer their time and abilities to “make the best better”.

### 4-H Organizational Leader’s Meeting

Monday, September 30th

6:30pm at JCC Carnahan Center

### 4-H Committee Chair Meeting

Thursday, September 19th

6:30pm at JCC Carnahan Center

### Interested in becoming a 4-H Committee Member.....

If so, please submit a letter of interest to the Chautauqua County 4-H office. If you have questions, please email Lisette at [lmc323@cornell.edu](mailto:lmc323@cornell.edu) or call 716-664-9502, ext. 214.

### Remember:

#### Send Meat Animal Sale Thank You Notes

Don't forget to send thank you notes to buyers and sponsors too!

Include a copy of the thank you in your records and mail a copy to the 4-H Office.

If you need your buyer info please contact the 4-H Office at 716-664-9502 ext. 214.



### 2024-2025 4-H Enrollment

Mark your calendars!

Open enrollment starts October 1st.







# Animal Project News

## Exhibition Poultry Project

**Committee Meeting**  
Monday, August 19th  
6:45 PM (Location TBD)  
Tuesday, September 24th  
6:45 PM



**Project Meetings**  
TBA

\*ALL meetings are at 6:30 PM  
unless otherwise noted  
Committee Chair: Jamie Smith

smith\_jamie@mac.com

## Horse Project

**Committee Meetings**  
Tuesday, August 13th

**Project Meetings**  
TBA



\*ALL meetings are at 6:30 PM  
unless otherwise noted  
Committee Chair: Kasey Fanara  
blondieshort24@yahoo.com

## Rabbit Project



**Committee Meetings**  
September 26th

**Project Meetings**

August 5th (State Fair Meeting)  
Thursday, September 12th

\*ALL project meetings at 6:30 unless  
otherwise noted\*  
\*Committees at 7:00 PM\*  
Committee Chair: Kim Chapman  
kchapman4574@gmail.com

## Goat Project

**Committee Meetings**  
Monday, August 26th  
Monday, September 23rd

**Project Meetings**  
TBA

\*ALL meetings are at 6:45 PM unless  
otherwise noted\*  
Watch our Facebook page!

Contact: Keith LaRoy  
716-485-1537



## 4-H Program Committee

Thursday, August 15, 2024  
7:00 PM



## Beef Project

**Committee Meetings**

Thursday, August 8th  
Wednesday, September 18th

**Project Meetings**  
TBA

\*ALL meetings are at 6:30 unless  
otherwise noted\*

Committee Chair: Dave Schauman  
chautcobeeffprogram@gmail.com

## Market Poultry Project

**Committee Meetings**

Monday, September 9th  
Following Project Meeting

**Project Meetings**

Monday, September 9th  
6:30 PM

Committee Chair: Julie Covert  
jcoverts@windstream.net



## Hog Project

**Committee Meetings**

Wednesday, September 18th  
6:00 PM

**Project Meetings**

TBD

\*All project meetings are at 6:30 PM unless  
otherwise noted. Committee is at 6:00 PM

Please note: One parent/guardian MUST  
attend meetings with their 1st and 2nd year  
members.

Committee Chair: Louis Smith  
716-785-1890



**\*STATE FAIR  
PROJECTS DUE  
AUGUST 12TH**

**\*RECORD BOOKS DUE  
SEPTEMBER 16TH**

## Dog Project

**Committee Meetings**

Wednesday, Sept 18th

**Project Meetings**

Wednesday, Sept 11th



All Project Meetings at 6:30 PM  
Committee Chair: Roxanne Young  
roxy6825@windstream.net

Any changes will be posted on Remind

## Teen Ambassadors

TBA

\*ALL meetings are at 6:30 PM  
unless otherwise noted

## Sheep Project

**Committee Meetings**

TBA

**Project Meetings**

TBA

\*All committee meetings at 6pm and  
project meetings at 7pm unless  
otherwise noted\*

Committee Chair: Shawn Huntington  
shuntington@randolphcsd.org



## Dairy Project

**Committee Meetings**

Thursday, August 1, 2024  
6:30 PM

**Project Meetings**

TBA

Committee Chair: Bart Nickerson  
bjnick@windstream.net





## Fall Planting

Sharon Rinehart, Contributing Chautauqua County MGV

Seems like we just started our spring gardens, but we now need to plan for fall. At this time of year, it is not time to stop planting. Many plants can and/or should be planted in the fall. Fall is a great time to plant. There is less heat and fewer pests. The plantings you couldn't do during the summer months because it was unbearable to be outside can be done now in the fall.

If you start 8 weeks before your first expected frost, you can plant vegetables like kale, lettuce, carrots, radishes, beets, and Swiss chard. These can be planted directly in your garden. Remove garden matter that is no longer producing. If needed, add organic matter to the soil. Cool weather crops such as peas and lettuce that thrived in the cool spring will grow in the coolness of the fall. Make sure you pick varieties that mature fast. If you are lucky enough to have a cold frame, you can plant some of these vegetables with fewer weeks before the first frost. Some crops can survive a light frost and may improve their flavor after a light frost. Carrots, turnips, rutabagas, and beets get sweet because during the cold, they convert their starch to sugar. Broccoli, Swiss chard, carrots, spinach, and parsley can survive with a frost as low as 25 degrees. If you do not know your first frost date, you can find it on a Cornell University website – [www.nrcc.cornell.edu](http://www.nrcc.cornell.edu). There is other helpful climate and growing information on this website

Did you buy perennials earlier in the season and still haven't planted them? There is still time to plant perennials in the fall and have wonderful flowers next year. Perennials that prefer to be planted in the fall include daylilies, echinacea, helenium, rudbeckia, coreopsis, bee balm and garden phlox. If the perennial you purchased is still in a pot, plant it in the ground. It will have a better chance of survival. Make sure you plant so they have time to establish their root system before the winter freeze.

Planting trees in the fall is better for the tree. If the ground is not frozen, you can plant the tree. Trees are dormant in the winter. Their growth and metabolism are slowed down, and they are conserving energy. It gives the tree the time to establish their roots before the heat of summer. Planting in the fall will give the tree time to have a stronger root system.

Shrubs, much like trees, can be planted in the fall. Many will be more established and have a healthier root system, if planted in the fall. The ground is still warm, and the shrub has plenty of time to grow. They can continue to grow until the soil reaches 40 degrees. Shrubs you might consider planting this fall are laurel, privet, red twig dogwood, hydrangea, and forsythia.

My personal favorite planting in the fall are bulbs. Fall is the time to plant tulips, daffodils, grape hyacinths, narcissus, crocus, and allium. There are many more to choose from. You can plant bulbs as long as you can dig a hole in the soil. I have successfully planted bulbs in January during an unseasonably warm spell. Do your homework so you know how deep to plant. Each type has a different ideal planting depth. If it is too deep, the plant may struggle to come up through the soil. If it is too shallow, there is a possibility that it may die from the freezing/thawing cycles.

Fall is definitely a great time to plant. You have less work in your garden than you have in the spring and the weather is much more comfortable than the hot days of summer. You will also be rewarded next spring and summer when the plants are in full bloom.

### References:

Fall Planting for the Vegetable Garden, I'll Meet You in the Garden with Shellie Wise, Cornell Cooperative Extension Warren County, May 14, 2021.

Baessler, Liz, Cold Sweetening Root Crops: Commo Vegetable That Get Sweet in the Winter, General Vegetable Garden Care, Gardening Know How, April 25, 2021

Northeast Regional Climate Center, [www.nrcc.cornell.edu](http://www.nrcc.cornell.edu), 2021

10 Things to Plant in Your Fall Garden (zone 5), The Garden, [www.OurLittleSuburbanFarmhouse.com](http://www.OurLittleSuburbanFarmhouse.com), July 18, 2021  
Noonan, Jennifer, 12 Fast-Growing Shrubs to Plant this Fall, Bob Vila, 2021.

Why It's Great to Plant Trees in the Fall, Tree Planting, Arbor Day Foundation, August 28, 2019.



**Building**  
Healthy Habits

# Summer Quick Tips

Cornell  
Cooperative  
Extension

**Protect yourself  
with COVID-19  
vaccines at no  
cost to you.**



**Find a COVID-19 Vaccine at  
Vaccines.gov**



## Cultural Corner

Celebrate National Watermelon Day on August 3rd!

### Watermelon Fun Facts:

1. Watermelon has been grown since prehistoric times!
2. Seeds and leaves of watermelon have been found in Egyptian tombs.
3. Europeans and Africans brought watermelon to the Americas.
4. Largest watermelon ever was 351 pounds, grown in Tennessee!

## What's in Season

August has many fruits and vegetables that are at their peak this month. Look for apricots, mangoes, nectarines, peaches, plums, cucumbers, summer squash, corn on the cob, bell peppers, eggplant, and tomatoes at your local Farmers' Market.

Try adding fresh fruits and vegetables to smoothies, salads, jams, salsas, or casseroles.



## GET FREE COVID-19 VACCINES!

The BRIDGE ACCESS Program allows those without health insurance or those who have insurance that doesn't cover vaccines to get the COVID-19 vaccine for free. Ask about getting the vaccine at your local CVS or Walgreens store or at other participating pharmacies.

[WWW.VACCINES.GOV](http://WWW.VACCINES.GOV)





## Recipe

### Brocco Poppers

Makes 4 servings, Serving size 5 pieces

#### Ingredients

- 2 eggs
- 1/2 cup shredded cheese (2 ounces)
- 1/2 cup dry breadcrumbs
- 1 tablespoon all-purpose flour
- 1/4 teaspoon of garlic powder
- 1/4 teaspoon of salt
- 1/4 teaspoon of black pepper
- 12 ounces frozen broccoli, thawed, dried, and chopped very small (about 2 1/2 cups) or lightly cooked fresh broccoli

#### Directions

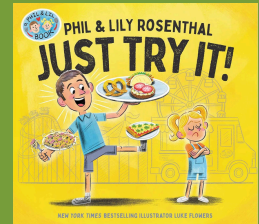
1. Wash hands with soap and water.
2. Preheat oven to 375 degrees F. Lightly grease baking sheet.
3. In a large bowl, stir together the cheese, eggs, breadcrumbs, flour, garlic powder, salt, and pepper.
4. Add broccoli to the bowl and mix all ingredients evenly.
5. Scoop a rounded tablespoon of the mixture onto the baking sheet and form into a ball. Space about 1 inch a part.
6. Bake until poppers are golden brown and cheese is bubbling, about 15 minutes.
7. Remove from oven and let cool for 1-2 minutes before serving.
8. Refrigerate leftovers within 2 hours.

Nutrition Facts: Serving Size: 5 pieces Calories: 180, total fat: 8g, saturated fat: 3.5g, cholesterol: 105mg, sodium 390mg, carbohydrate: 16g, fiber 2g, total sugars: 2g, added sugar: 0g, protein: 11g, Vitamin D: 1mcg, Calcium: 188mg, Iron: 2mg, Potassium: 258mg

Source: [www.foodhero.org](http://www.foodhero.org)

#### Kids' Book Nook

Does your child hesitate trying new foods? If so, from your local library, check out "Just Try It" by Phil and Lily Rosenthal. Read the book with your child and watch what happens as a food loving dad encourages his daughter to try new foods!



For more information contact:

Cornell Cooperative Extension  
of Chautauqua County

Jamestown Office:  
Wendy Alexander  
(716) 664-9502 Ext. 221  
[wa66@cornell.edu](mailto:wa66@cornell.edu)

Building Healthy Habits BHH



The Chautauqua County Extension Connection (**USPS#101-400**)  
is published monthly by Cornell Cooperative Extension of  
Chautauqua County, JCC Carnahan Center  
525 Falconer Street, PO Box 20  
Jamestown, NY 14702-9608

**Periodical Postage Paid at  
Jamestown, NY 14701.**

*Cornell Cooperative Extension is Chautauqua County's link to Cornell University. Our purpose is to make available to the individuals, families, communities, and businesses of Chautauqua County the resources and research-generated knowledge of Cornell University.*

*By identifying and addressing local needs, Cornell Cooperative Extension provides practical information to help people help themselves and develop their leadership potential. Please feel free to contact Cornell Cooperative Extension for more information.*

*The "Extension Connection" is prepared by the CCE staff and is published monthly by Cornell Cooperative Extension - Chautauqua County. **If you have information for the "Extension Connection" it needs to be in the CCE office by the 10th of each month for the following month's issue.***

*The views expressed in presentations made at CCE meetings or other CCE events are those of the speaker and not, necessarily, of CCE or its Board of Directors. Presentations at CCE events, or the presence of vendors at CCE events, do not constitute an endorsement of the vendor or speaker's views, products or services.*

*With regard to any information presented at any CCE event, CCE does not make any warranty, express or implied, including the warranties of merchantability and fitness for a particular purpose, and specifically disclaims any legal liability or responsibility for the accuracy, completeness, or usefulness of any information, apparatus, product, service or process presented and makes no representation that its use would not infringe upon privately owned or intellectual property rights such as Copyright, Trademark, Trade Dress etc.*

*The presence of a commercial vendor at a CCE event, and the presentation by any vendor of any information regarding any specific commercial products, process, or service by trade name, trademark, manufacturer, or otherwise, does not constitute or imply CCE's endorsement, recommendation, or favoring of such item or organization.*

*Any such material presented by any vendor in any format, without limitation, is for informational purposes only. Any potential customer of any vendor, who is present at a CCE event, is expected to conduct their own due diligence and assessment of the vendor, product, or services as appropriate for their needs.*

*The information herein is supplied with the understanding that no discrimination is intended and no endorsement by Cornell Cooperative Extension is implied. Please contact the Cornell Cooperative Extension - Chautauqua County office if you have any special needs. Cornell Cooperative Extension of Chautauqua County is an Equal Opportunity Program and Employer.*