

Cornell Cooperative Extension of Chautauqua County's **Extension Connection**



Cornell Cooperative Extension
Chautauqua County

December 2025
Volume 10 - Issue 12

IN THIS ISSUE

Board and Association News	3
Agriculture	4-10
CCSWCD Chautauqua County Soil & Water Conservation District	11
4-H/Youth Development	12-16
Master Gardener	17
EFNEP ~ Building Healthy Habits (Expanded Food and Nutrition Education Program)	18-19

COVER: CCE staff from Chautauqua, Cattaraugus and Board members visiting Cornell University learning about their Botanical Gardens ,licensed and Kosher Dairy plant, and their undergraduate introduction to wine making.

Your picture could be on our next cover!
Send your submission to lpc33@cornell.edu

The Chautauqua County Extension Connection (USPS #101-400)

The Chautauqua County Extension Connection (USPS#101-400) is published monthly by Cornell Cooperative Extension of Chautauqua County. Subscription included in minimum of \$65 Program Participation fee. Periodical Postage Paid at Jamestown, NY 14701. "POSTMASTER: Send address changes to the: Chautauqua County Extension Connection at 525 Falconer St. JCC Carnahan Center, PO Box 20 Jamestown, NY 14702-0020."

Cornell Cooperative Extension of Chautauqua County Staff Contact Information

Emily Reynolds, CCE Executive Director
eck47@cornell.edu
716-664-9502 ext. 201

Darcy Cramer, Finance Associate
dlc284@cornell.edu
716-664-9502 ext. 208

Lucia Conti, Association Admin. Asst.
lpc33@cornell.edu
716-664-9502 ext. 209

Katelyn Walley-Stoll, Agriculture Team Leader
kaw249@cornell.edu
716-664-9502 ext. 202

Eliza Hensel, Natural Resources
Educator
emh275@cornell.edu
716-664-9502 ext. 220

Sofia Russo, Ag. Program
Coordinator
ssr236@cornell.edu
716-664-9502 ext. 203

Lynne Wahlstrom, 4-H Youth Development Educator
lmw264@cornell.edu
716-664-9502 ext. 212

Sarah Hatfield, 4-H Youth
Development Educator
sph76@cornell.edu
716-664-9502 ext. 216

Jeff Tome, 4-H Youth
Development Educator
jrt284@cornell.edu
716-664-9502 ext. 215

Lisette Cabrera, 4-H Program Coordinator
lmc323@cornell.edu
716-664-9502 ext. 214

Linnea Haskin, New York Food for New York Families
lmc373@cornell.edu
716-664-9502 ext. 210

Mary Ryder, SNAP Ed
Nutrition Educator
mer262@cornell.edu
716-664-9502 ext. 217

Wendy Alexander, EFNEP Nutrition Educator
wa66@cornell.edu
716-664-9502 ext. 221

SWNY Dairy, Livestock, and Field Crops Program
CCE Chautauqua @ JCC Carnahan Center
Jamestown, NY 14702
716-640-0844
swnyteam@cornell.edu

Lake Erie Regional Grape Program
6592 W. Main Road
Portland, New York 14769
716-792-2800

Cornell Vegetable Program
480 North Main Street
Canandaigua, NY 14424
585-394-3977 ext. 426

CCE - Chautauqua County
@ JCC Carnahan Center
525 Falconer St. PO Box 20
Jamestown, NY 14702-0020

Phone: 716-664-9502 Fax: 716-664-6327

Association News

Board of Directors

Alyssa Porter - President
George Haffenden - Treasurer
Dawn Betts - Secretary
Randolph (Randy) Henderson
Emma Boutelle
Jessica Brehm
Chad Buck
Suzanne Fassett-Wright
Dinah Hovey
Heather Gregory
Sue Lindsey
Louis Smith
Pat Walker
Fred Johnson, County Legislator
Tom Nelson, County Legislator
Renee Mooneyham, Extension Specialist

Agriculture Program Committee

Melissa Baideme, Westfield
Emma Boutelle, Kennedy
Jessica Brehm, Falconer
Andrew Campbell, Westfield
Katelyn Card-Allen, Jamestown
Virginia Carlberg, Frewsburg
Cynthia Carlson, Van Buren Pk
Shannon Rinow, Panama

4-H Program Committee

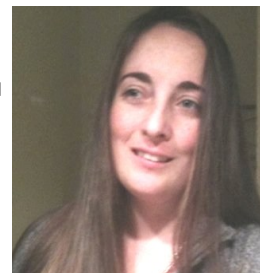
Betty Catanese, Stockton
Laura LeBarron, Silver Creek
Jan Schauman, Jamestown
Keith LaRoy, Kennedy
Lindsay Eckman, Frewsburg
Taylor Young, Panama

4-H Program Advisory Chairpersons

Joyce Edwards	Clothing and Textiles
Bart Nickerson	Dairy
Aaron Carlberg	Goat
Roxanne Young	Dog
David Schauman	Beef, Meat Animal Sale
Kasey Fanara	Horse
Marie Warner	Snack Bar
Jamie Smith	Exhibition Poultry
Melissa Winton	Market Poultry
Kim Chapman	Rabbit
Louis Smith	Hog
Shawn Huntington	Sheep
Cassie Skal	Teen Ambassadors

From the Office of the Executive Director

As the year concludes, I cannot help but reflect on our successes and look forward to the future. A special thank you to the Chautauqua County Legislature for their generous and continued support. Please visit our website and review our 2025 Annual Report. We continue to grow into 2026 as we have received support from WNY Foundation to increase our staff capacity to better develop, manage and improve programs in Nutrition, Agriculture and Youth Development.



This time of year, it is also important to recognize The United Way of Southern Chautauqua County for their support of our 4-H Youth Development programming. This support allows members the opportunity to experience the nation's greatest youth development program. I encourage everyone to support the United Way Campaign efforts that annually will invest more than \$1 million dollars into 40 organizations in Southern Chautauqua County. You can visit them directly at www.uwayscc.org.

If you have not yet joined 4-H or subscribed to CCE of Chautauqua County, you can do so by visiting our website www.cce.cornell.edu/chautauqua or calling the office at 716-664-9502.

As always please feel free to contact me with any questions or concerns, enjoy the upcoming holidays and in a world where you can be anything, be kind.

What's Bugging You? Webinars

Each month, NYSIPM experts share practical information and answer questions on using integrated pest management (IPM) to avoid pest problems and promote a healthy environment where you live, work, learn and play.

All webinars are scheduled for 12:00 - 12:30pm on the first Friday of each month.

December 5: IPM for Clothes Moths and Pantry Moths

This month we'll focus in on two moths that can be pests in your home - clothes moths and pantry moths. Learn how to use IPM tools to deal with them.

January 2: Stratifying Native Perennial Wildflower Seeds

Learn how to prepare perennial wildflower seeds to germinate inside. Plus, revisit all of the IPM we learned in 2025 with our annual Year in Review video.

Several cockroach species are found in homes, and each one tells a story of why it's there. Learn to distinguish different indoor cockroaches, and stick around to hear about the newest cockroach invader in the Northeast.

To register please go to: <https://nysipm.cornell.edu/whats-bugging-you/first-friday-events>

If you want to rewatch one of our seminars you can find them in our YouTube playlist at <https://tinyurl.com/4p7k6y4y>

Chautauqua County Agricultural News

Crop and Pest Management Guidelines

A Cornell Cooperative Extension Publication

Cornell Cooperative Extension
Pesticide Safety Education Program

Notice of Guideline Production Pause

Cornell IPM has given us notice that after careful consideration, and in consultation with Illume Projects, a consulting company assisting them in reimagining the **Cornell Crop and Pest Management Guidelines**, they have made the decision to **pause the production of guidelines for 2026**. This decision was not taken lightly, it is the result of a comprehensive process that included end-user interviews, internal surveys, and sales data analysis. It became clear to them that they cannot continue producing the guidelines and fully restructure them at the same time, doing both simultaneously is not feasible without compromising quality and long-term sustainability.

By pausing production, we can dedicate all available resources and time to **rebuilding the entire system**, ensuring that when we re-launch in 2027, the guidelines will reflect a modernized approach built around the grower and other user experience. This will also ensure **100% buy-in from junior and tenured faculty and extension specialists**, which is critical to securing the long-term success and relevance of the guidelines for New York agriculture, communities and beyond.

We understand the impact this may have and appreciate your support as we work toward a stronger, more sustainable future for the guidelines. We will keep you informed of progress and opportunities for input during this transition.

2025 Guidelines may still be available for purchase if you need the most up to date information available.

Thank you for your understanding and continued support as we work toward a more sustainable and effective approach for producing the **Cornell Crop and Pest Management Guidelines**.

It's Time - Renew Your Annual CCE-Chautauqua Subscription

Our annual CCE-Chautauqua Agricultural Program Subscriptions have gone out in the mail! Please reach out to our office if you have any questions or concerns.

Your subscription helps to support our programming at CCE-Chautauqua and our involvement in our Regional Teams, including the Lake Erie Regional Grape Program, the Cornell Vegetable Program, and the Southwest New York Dairy, Livestock, and Field Crops Program.

2026 Agricultural Program Subscription

Subscribe today to benefit you, your farm, your business, your garden, and much more!



Please return as soon as possible to receive the benefits of a full year's subscription

Cornell Cooperative Extension
Chautauqua County

Building Strong and Vibrant New York Communities

Demystifying Ag Value Assessments : A Summary for Landowners and Farmer Renters

By Katelyn Walley-Stoll

Farming comes with plenty of challenges, and property taxes is a pretty big one of them. In New York, the Agricultural Assessment Program helps lower property taxes for land used for farming. Every year, if you own or rent farmland, this program can save you money. Here's what you need to know to take advantage of this benefit AND connect with rented landowners to ensure they're receiving this benefit.

What's the Point?

The Agricultural Assessment Program provides a route for reduced property tax bills for land in agricultural production. Land included in an ag assessment is taxed based on the land's agricultural value rather than the full market value. This helps lessen the tax burden of farming which is a land heavy activity. It is also a great tool for rental negotiations as non-operating landowners can receive the tax benefits without owning a farm of their own.

Who Qualifies?

In general, to be eligible for Ag Assessment, farms must be at least 7 acres in size and generate at least \$10,000 in annual sales of agricultural products for the preceding 2 years. Some things to note:

- The \$10,000 in sales of agricultural products is SALES not PROFIT.
- The qualifying value is also AVERAGED over the preceding two years - so you may still qualify even if you have a year under \$10,000.
- If the farm is LESS THAN 7 acres, it can still generally qualify with more than \$50,000 in annual sales (greenhouses, nurseries, etc.).
- Commercial Horse Boarding can qualify if there are at least 10 horses boarded and the operation earns more than \$10,000 annually.
- Beekeeping is limited to 10 acres of eligibility.
- Up to 50 acres of farm woodland can be included if the farm is active in agroforestry efforts.
- Land that also includes processing areas, home residences, or retail areas separate from agricultural production will not be included.
- Beginning farmers can qualify as soon as they have one documented year of more than \$10,000 in sales.

Can Rented Land Qualify?

Land rented for agricultural purposes is eligible for an agricultural assessment. As long as the land is associated with a farm business who qualifies, the landowner can apply to receive ag assessment with proof of a 5+ year rental agreement.

What if I Don't Have \$10,000 in Sales?

In cases of natural disasters, adverse weather conditions,

or farm depopulation due to public health concerns, farms may experience years where they do not reach the minimum sales values required. Cornell Cooperative Extension staff is able to assist in certifying losses with proper farm documentation.

What about Ag Districts?

The Ag Assessment Program is outlined in NYS's 1971 Agricultural Districts Law which was enacted to protect and promote the availability of land for farming purposes. However, it's important to note that Ag Districts and Ag Assessments are two different things! Land that is in an Ag District might not qualify for Ag Assessment. Land that is NOT in an Ag District can still receive Ag Assessment.

How Do I Apply?

The initial application for an Ag Assessment is completed by the landowner. First, visit your county's Soil and Water Conservation District office. For a small fee (typically \$20 or so), they will run a Soil Group Worksheet. This classifies your farmland based on soil productivity class and will calculate acreage within each category.

Next, the landowner will complete Form RP-305. This form is available online or through your county's Office of Real Property. Information collected includes contact info, parcel numbers, acreage uses and sales values. In rental situations, it is helpful for the farmer to assist the landowner with the initial application.

The Soils Worksheet and RP-305 are then submitted to the town assessor or county office of real property. Typically, the annual due date is March 1st, but check on your local requirements.

Do I Have to Apply Annually?

Annual renewals are required but are completed on a simplified application form, RP-305-r. Many county offices and/or town assessors will directly mail these forms annually.

Are There Penalties?

If land that receives an Ag Assessment is removed from agricultural production, the landowner may need to repay the tax savings from the previous 5 - 8 years. Non-use is NOT considered conversation, but actively changing the land use will trigger a penalty. If the land is sold or transferred, the new owners need to be made aware of any previous assessments.

Where can I Learn More Information?

The Agricultural Assessment Program is overseen by New York State Agriculture and Markets and New York State's Department of Taxation and Finance. They have an official fact sheet that is available on their website. Additionally, Cornell Cooperative Extension and Farm Bureau have done multiple fact sheets, webinars, and informational efforts.



Chautauqua County
DEPARTMENT OF PLANNING AND DEVELOPMENT

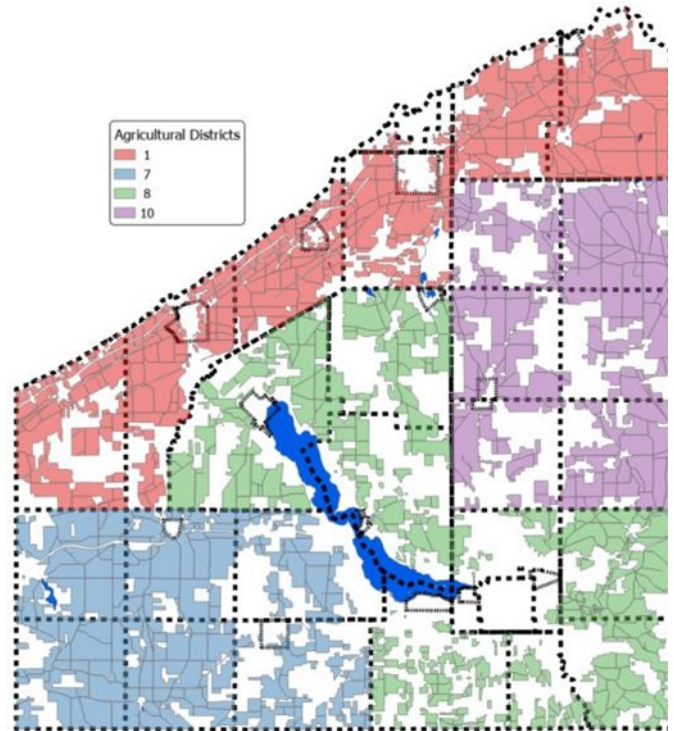
Agricultural Districts Inclusion Period

The Chautauqua County Department of Planning and Development is preparing for the upcoming inclusion period for the Chautauqua County Agricultural Districts.

Landowners can request to have viable agricultural land added to an ag. district during the annual inclusion period from **January 2 to January 31**. Lands already included in the district need not submit a request. Landowners must complete the Agricultural District Inclusion Worksheet, which includes a written description of the land, the tax map identification number and be accompanied by a copy of the relevant portion of tax map showing the location of the property the landowner would like included into the Ag District. The worksheet and additional information on the process can be found at: bit.ly/CHQaginclusion. Landowners can print out the appropriate map via the County's GIS website available at: bit.ly/CHQgis.

Please submit all inclusion requests to the Department of Planning and Development, Attn: Lauren Sharp, BWB Center 201 West Third Street Suite 115 Jamestown, NY 14701 or email to sharp@chqgov.com on or before 4:30 PM on January 31, 2026. ***Inclusion requests can only be accepted during the inclusion period from January 2 to January 31.***

An agricultural district is a geographic area which consists predominantly of viable agricultural land. Agricultural operations within the district are the priority land use and afforded benefits and protections to promote the continuation of farms and the preservation of agricultural land. Once land has been added to the ag. district there is no additional yearly requirements. Land can only be removed from an ag. district during the eight-year review process.



For more information on Chautauqua County's Agricultural District and the Inclusion Period please contact:

Lauren Sharp, Senior Planner
Chautauqua County Department of
Planning & Development
BWB Center
201 West Third Street, Suite 115
Jamestown, New York 14701
Phone: (716) 661-8245
Email: sharp@chqgov.com



LARRY ROMANCE & SON, INC.

Parts - Sales - Service

Come see us for all your Vineyard - Dairy - Construction & Consumers Needs

SHERIDAN, NY • 2769 ROUTE 20
(716) 679-3366 • tractorsales@netsync.net

ARCADE, NY • 543 W. MAIN ST.
(585) 492-3810

www.larryromanceandson.com

How to Care for Your Chautauqua Grown Christmas Tree

By Katelyn Walley-Stoll

Cornell Cooperative Extension of Chautauqua County's Agriculture program encourages you to consider choosing a locally grown and cut Christmas Tree this year as you celebrate the holidays. Purchasing a local tree is easy, affordable, and helps support our local agriculture industry. For more information on where to purchase your tree locally, visit Chautauqua Grown, our local farm-to-table directory, at cce.cornell.edu/Chautauqua.

When choosing your tree, select a fresh tree that has springy branches, a strong scent, and doesn't lose very many needles when shook. Avoid trees that have an off or pale color and choose ones that are a deep green or blue. Transport your tree safely and securely, and place it in a bucket of water once you reach your destination if it is going to be more than 12 hours before you're able to display it in your stand.

When using a tree stand to support your tree, avoid removing any of the outer layers of wood when fitting into a stand. Removing outer layers will cause the tree to not uptake water efficiently – choose a tree stand large enough for your tree's diameter. Select a location inside your home that is away from any heat or fire sources. Unless your tree was cut within 12 hours, make a new cut perpendicular to the stem and remove at least half an inch before placing in the stand for optimal water uptake.

Caring for your locally grown tree is easy! The key is to maintain a high moisture level from the time it's purchased to the time it's taken out of your home. Choose a high volume water-holding stand, and ensure it is never empty. Trees will absorb water quickly and levels should be checked daily. A good rule-of-thumb is to provide 1 quart of water per inch of stem diameter per day.

You may have seen some tree care products advertised that promise to keep your tree fresh for a longer time – however, there is no scientific evidence that these products work! The key to a fresh tree is a constant supply of water along with choosing a prime tree to work with. Products that have not been studied include anti-transpirants, water-holding gels, floral and tree preservatives, "IV" type devices, and flame retardants. A well cared for tree can remain fresh for four weeks before drying and losing many needles.

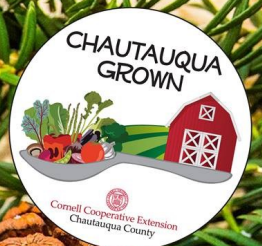
Cornell Cooperative Extension
Chautauqua County

CHRISTMAS TREE CARE

LOTS OF WATER

AVOID HEAT SOURCES

CHOOSE LOCALLY
GROWN AND CUT



LABOR ROADSHOW IX

Registration Now Open!

About Labor Roadshow IX

IN PERSON SESSIONS

In person events will run from 8:30 AM – 4:00 PM.



GREENWICH
DECEMBER 9
Elks Lodge



WATERTOWN
DECEMBER 10
Hilton Garden Inn



GENEVA
DECEMBER 17
Cornell AgriTech



BATAVIA
DECEMBER 18
Genesee Community College

ONLINE SESSIONS



DECEMBER 1 & 22 from 12–2 PM
Zoom webinar platform – access to both webinars is included with one onsite registration!

REGISTRATION INFORMATION



\$75/person
Cash, check, and advance online payments will be accepted. Each registration includes onsite programming for one event date, access to two webinars, coffee, refreshments, and lunch provided.



Questions?

About program: cu-agworkforce@cornell.edu
About registration/payment: office@nedpa.org

Event Highlights

AWDC's Labor Roadshow IX will dig deep into pressing issues that every farm employer needs to understand. Dynamic speakers will present and take questions on topics such as the following:

- Immigration and Farm/Family Preparedness
- Compliance Updates
- Unionization
- Employee Engagement and Improving Culture
- Employee Housing Operational Costs
- Pest Management in Employee Housing
- Legality of Employee Monitoring
- How to Interact with Regulators and the Public about Labor Issues

Visit our website for registration information:
agworkforce.cals.cornell.edu/labor-roadshow/

**REGISTER
NOW!**

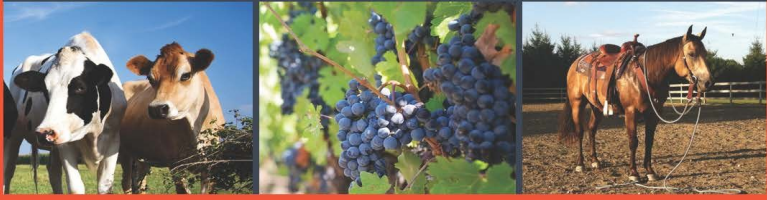


AWDC
Agricultural Workforce Development
Council of New York State

Chautauqua County Farm Bureau®
is working hard every day to
protect the future of agriculture
and our rural landscape



Join Today!
NYFB.org 800-342-4143



A SMART CHOICE

Choosing the right insurance is about more than just getting the quickest quote. For more than a century, **AMERICAN NATIONAL** has provided reliable service and knowledgeable advice from local agents who take the time to listen and understand your unique needs.



GEORGE HAFFENDEN LUTCF
AGENT

716.386.5393

ghaffenden@American-National.com

PO Box 300 Strykersville, NY 14145

<https://an.insure/georgehaffenden>

Products and services may not be available in all states. Terms, conditions and eligibility requirements will apply. Life insurance and annuity products underwritten by American National Life Insurance Company of New York, Glenmont, New York. Property and casualty products and services may be underwritten by Farm Family Casualty Insurance Company or United Farm Family Insurance Company, both of Glenmont, New York.

License 000000

14-065.87136.V4.03.20



**FULLY
FOCUSED ON
SUPPORTING
YOUR VISION.**

At Farm Credit East, the future has never been clearer.

Today, there are plenty of distractions in agriculture to sway producers and their partners from the task at hand. But Farm Credit East maintains the same mission-driven strength that helps both our teammates and customer-owners stay focused on the future. We're proud to meet the credit and financial needs of Northeast farming, forestry, fishing and agribusiness, all while gaining new perspective ourselves.

farmcrediteast.com | 800.562.2235

Crop Growers crop insurance from Farm Credit East is an equal opportunity provider.



Loans & Leases

Accounting Services

Profitability Consulting

Tax Preparation & Planning

Appraisals

Estate Planning

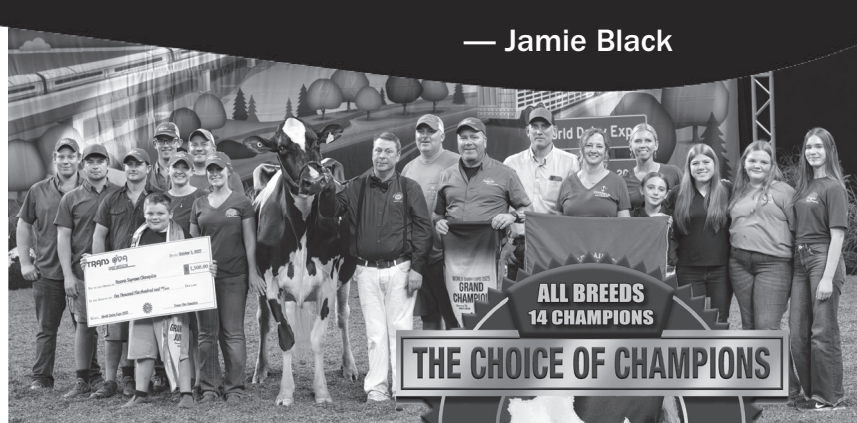
Beginning Farmer Programs

Crop & Livestock Insurance



“I’m an udder guy. This is our go-to.”

— Jamie Black



OAKFIELD CORNERS DAIRY, OAKFIELD, N.Y. (Cowsmo photos, Trevor Lockhart photo above left)
Jonathan and Alicia Lamb, owners; Jamie Black, show herd manager
Exhibited World Dairy Expo 2025 Grand Champion Holstein, Reserve Supreme
Lovhill Sidekick Kandy Cane EX96 with 122,644M lifetime (2x) at 5-years-old

“I’m an udder guy. I like udder quality, udder texture. Great-uddered cows. You’ve got to have that foundation,” says Jamie Black, manager of the show herd owned by Jonathan and Alicia Lamb at Oakfield Corners Dairy, near Batavia, New York. They are housed separately from the commercial herd of 10,000 cows milked at multiple sites.



The Lambs are all involved and credit their dedicated team. Congratulations!

Scan QR for story, or go to qrco.de/WDE25_KandyCane

UDDER COMFORT™
Quality Udders Make Quality Milk

“We use Udder Comfort™ on all fresh cows for the first few milkings. It helps them settle in, keeps swelling down, and gets the texture where we want it. I hate treating cows for mastitis, so the more we do on the front end the better. This is our go-to for any udder issue to help them bounce right back,” he says.

That same steady care helped their Lovhill Sidekick Kandy Cane EX96 win Grand Champion Holstein and Reserve Supreme at the 2025 World Dairy Expo.

Her Comfort is Our Passion!

Softer udders ⇒ Faster milking
Better quality ⇒ MORE MILK

1.888.773.7153 uddercomfort.com
uddercomfort.blog

Our 27th Year!
Helping reach their potential since 1998!



NBW Tools & Video!



For external application to the udder only, after milking, as an essential component of udder management. Always wash and dry teats thoroughly before milking.

Chautauqua County Soil & Water Conservation District Newsletter

Northcrest Business Center, 220 Fluvanna Ave,
Suite 600, Jamestown, NY 14701
Phone (716) 664-2351 Ext 5
Email: chaut-co@soilwater.org
Board Meetings are held the third Wednesday
of each month at 8:30 AM
Board of Directors: Fred Croscut, Pierre Chagnon,
Bruce Kidder, Allen Peterson, Lisa Vanstrom



SWCD Staff:
David Spann, District Field Manager
Cassandra Pinkoski, Grants Specialist
Greg Kolenda, District Field Technician
Gage Lindell, District Field Technician
NRCS Jamestown Field Office Staff:
Robert Nothdurft, District Conservationist
Anna Emke-Walker, Soil Conservationist

Stream Erosion & What to Do About It

Within Chautauqua County, many landowners have been experiencing erosion in their streams and ditches due to the increased rain events that have been taking place throughout the past few years. Landowners have been seeing unprecedented rain events one after the other, which has greatly affected water channels all throughout the county. If you are one of these people, our office can provide technical assistance and possibly obtain grant funding for your project.

The procedure from assessing your erosion problem to the end result of fixing it is quite simple, but it is usually a long process. The first step to fixing an erosion problem is to call professionals, like Soil & Water, to assess the issue. Once this is done, technical assistance can be provided through designing and permitting the project. Determining if your project needs a permit is simple, but if your property falls on a protected stream, this can lengthen breaking ground on a project by months. For a protected stream project, a permit must be sent into the New York State Department of Environmental Conservation (NYSDEC). They must review the project, which can take months due to the influx of permit requests they receive on a regular basis. It is advisable to plan well in advance for any stabilization project that a landowner would want to pursue.

Grant funding is also something that the District may be able to help a landowner pursue. Grant funding is not something that will be available to all landowners because it is usually dependent on the watershed that your project falls within. One common grant funding opportunity that this office utilizes is known as the

2% Bed Tax Water Quality Grant. This opportunity can fund up to \$40,000 on one project. The minimum a landowner can apply for is \$500. This grant is competitive, and they are reviewed in the spring by the Chautauqua County Waterways Panel. There are several criteria that this panel uses to rank the applications like erosion and sediment control benefits, water quality benefits, feasibility, ecological benefits, riparian buffers, and more. However, it is a good idea to plan well ahead before applying for this grant because work can not begin until the year after the grant is approved. If the erosion you are experiencing on your property is severe and needs immediate attention, this grant may not be a good fit.

While there are many landowners who need assistance to resolve their erosion issues, the Soil & Water office is prepared to help. Call us at 716-664-2351 x5 to set up a time to visit your property. We are looking forward to helping you!





Interested in becoming a 4-H Animal Science Committee Member?

Most committees are looking for members, especially Market Poultry.

If you are interested in serving on any committee, please submit a letter of interest to Jeff.

If you have questions, please email Jeff at jrt284@cornell.edu or call 716-664-9502, ext. 215.

FAQ's About 4-H

Who can enroll in 4-H?

Youth must be 5 years of age and no older than 18 years of age as of January 1, 2026 to participate in 4-H this year.

Where can I find youth or volunteer enrollment paperwork?

Enrollment forms are available at club meetings, animal project meetings, from the 4-H Office, or online: bit.ly/2026EnrollmentForms. Contact the 4-H Office if you would like enrollment information mailed or emailed. **Re-enrollments are due by November 1st or will be charged a late fee.**

What does it cost to participate in 4-H?

\$20.00 per child not to exceed \$60.00 per family. The enrollment fee can be paid by cash or check payable to "CCE", or via PayPal on our website.

What programs are available in Chautauqua County 4-H?

We offer Animal Science programs, Clubs, and Family Consumer Science Opportunities. Youth can complete a variety of opportunities based on their interests.

What role do volunteers play in 4-H programming?

Volunteers are key to the success of 4-H programs. Volunteers must complete enrollment paperwork each year as well. Enrollment forms are available at the 4-H Office or by visiting <https://bit.ly/2026EnrollmentForms>. Members of the community interested in volunteering can contact the 4-H Office at 716-664-9502 ext. 214.

Thank you, United Way Chautauqua County for helping support the cost of 4-H enrollment!



Do you want to learn more about dairy cattle and the dairy industry?

4-H youth are invited to participate in 4-H Dairy quiz bowl practice meetings to learn more about dairy cattle and the dairy industry. In dairy quiz bowl, youth "buzz" in to answer individual questions and with their other team members (4 youth total) to answer team questions. You don't need to do the dairy project to do the dairy bowl.

The following meetings are scheduled from 6pm-8pm at JCC Carnahan Building, 241 James Ave, Jamestown on Friday evenings.

- December 12, 2025
- December 19, 2025
- January 9, 2026
- January 16, 2026
- January 23, 2026
- January 30, 2026

Thank You for Your Incredible 4-H Fall Fundraiser Support!

We extend our heartfelt gratitude to **our amazing club leaders, dedicated youth, and their families** for making our fall fundraiser such a success. Your hard work and enthusiasm are truly appreciated!

A special thank you to everyone who supported us by purchasing **Fowler's Candy Bars** and **Cooke Tavern Soups**. Your support helps us continue providing meaningful opportunities for youth development.



Chautauqua County 4-H Green Tie Affair



Sunday, February 22, 2026

Chautauqua Harbor Hotel

3pm: Basket Raffle and Bake Sale

5pm: Dinner with Pie Auction to follow

We are looking for about 15 YOUTH interested in baking pies for the auction - reach out to Lynne if you're interested!



Terrific Turkeys visit Bush Elementary

Miss Sarah taught children about turkeys the week before Thanksgiving. Children learned the parts of the turkey, which parts they eat, and the nutritional value of the parts. Afterward, they had a chance to eat turkey in the cafeteria.

This opportunity was provided by Cornell Cooperative Extensions Farm to School program and a Rooted in Learning grant to bring farm education into the schools.

For more information on how to schedule this program or other programs, contact Sarah Hatfield at sph76@cornell.edu.

2025-2026 4-H Photos

We need your photos to celebrate 4-H online, in the newspaper and to the folks who fund us.

Go to <https://bit.ly/20254-HPHOTOS> to submit your photos to highlight 4-H.

Chautauqua County 4-H Foundation

Chautauqua County 4-H Foundation is the nonprofit organization that owns property in the town of Stockton, NY known locally as 4-H Acres. The Foundation holds this property to help advance the best interests of Chautauqua County 4-H in education, recreation, leadership and citizenship of its participants. The Foundation Board of Directors holds meetings once every quarter.

Currently, the 4-H Horse and Dog programs are the major users of 4-H Acres along with the Hog program using it for a storage facility. The current 2025-2026 Board of Directors is working to develop the property into a multispecies and multiuse facility, so that non-animal programs such as Teen Ambassadors and 4-H Clubs can use it for outdoor education and other opportunities.

It is important to note that although the Foundation owns the property and pays the majority of the insurance as well as the electric and water fees, it is up to the projects and clubs that use the facility to maintain the property. The Horse, Dog and Hog programs contribute to the cost of insurance which Foundation greatly appreciates. As with anything in life, maintaining and improving a property takes not only time and effort but money. The Foundation is always looking for grants and opportunities to bring revenue into 4-H Acres and is currently planning a golf tournament for June 2026 that will help fund building a picnic pavilion on the grounds. Other clubs or projects that use 4-H Acres once or twice pay no fee to use it, although any donations are very much accepted and appreciated.

4-H Acres is a lovely property that has tremendous potential to be used by all Chautauqua County 4-H projects and clubs and, hopefully, beyond the 4-H community. Any Chautauqua County 4-H clubs or projects wanting to use 4-H Acres will need to contact Jan Schauman at janschauman1949@gmail.com for information.

2026 4-H Theme

"Swing into a new adventure through 4-H"

Thank you to the Teen Ambassadors for the new theme!

December 2025						
Sunday	Monday	Tuesday	Wednesday	Thursday	Friday	Saturday
	1 Goat Committee 6:45 p.m.	2	3 Hog Committee 6:00 p.m. Exhibition Poultry Committee 6:30 p.m.	4 Rabbit Committee 6:30 p.m.	5	6 Welding at JCC MTI
7	8 Dairy Fundraiser Forms Due	9 Horse Committee 6:30 p.m.	10 Hog Project 6:30 pm Dog Committee 6:30 p.m.	11 Rabbit Project 6:30 p.m.	12 Dairy Bowl 6:00 p.m.	13
14	15 Goat Project 6:45 p.m. Beef Records Due	16	17 Dog Project 6:30 p.m. Dairy Fundraiser Pickup Location TBA	18 Sheep Committee 6:00 p.m. Sheep Project 7:00 p.m.	19 Dairy Bowl 6:00 p.m.	20
21	22 <i>Office Open by Appointment only</i>	23 <i>Office Open by Appointment only</i>	24 <i>Office Closed</i>	25 <i>Office Closed</i>	26 <i>Office Open by Appointment only</i>	27
28	29	30	31	30	31	

January 2026						
Sunday	Monday	Tuesday	Wednesday	Thursday	Friday	Saturday
				1 <i>Office Closed</i>	2	3
4	5 Rabbit Committee 6:30 p.m. Registrations due for Presentation Day	6 Market Poultry Committee 6:30 p.m. Meat Animal Sale Special Meeting 6:30 p.m.	7 Hog Committee 6:00 p.m.	8	9 Dairy Bowl 6:00 p.m.	10 Dairy Buds 1:00 p.m. at JCC
11	12 Rabbit Project 6:30 p.m.	13 Horse Committee 6:30 p.m.	14 Dog Committee 6:30 p.m. Hog Project 6:30 p.m.	15 Beef Committee 6:30 p.m. Dairy Committee 6:30 p.m.	16 Dairy Bowl 6:00 p.m.	17 Beef Fun Day Details TBA
18	19 <i>Office Closed</i>	20 Horse Project 6:30 p.m.	21 Dog Project 6:30 p.m.	22 Sheep Committee 6:00 p.m. Sheep Project 7:00 p.m.	23 Dairy Bowl 6:00 p.m.	24 Public Presentation Day 9:00 a.m.
25	26	27	28 Exhibition Poultry Project 6:30 p.m.	29	30 Dairy Bowl 6:00 p.m.	31

Animal Project News

Sheep Project



Meetings

Thursday, December 18

Thursday, January 22

****All committee meetings at 6:00 pm
and project meetings at 7:00 pm
unless otherwise noted****

Committee Chair: Shawn Huntington
shuntington@randolphcsd.org

Exhibition Poultry Project

Committee Meeting

Wednesday, December 3

Project Meeting



Wednesday, January 28

****ALL meetings are at 6:30 PM
unless otherwise noted***

Committee Chair: Jamie Smith
smith_jamie@mac.com



Beef Project

Committee Meetings

Thursday, January 15

Beef Project Meetings

Saturday, January 17 Beef Fun Day
Time and Location TBA

****ALL meetings are at 6:30 unless
otherwise noted****

E-mail Beef Records by the 15th

Committee Chair: Dave Schauman
chautcobeeffprogram@gmail.com

Horse Project



Committee Meetings

Tuesday, December 9

Tuesday, January 13

Project Meetings

Tuesday, January 20

****ALL meetings are at 6:30 PM
unless otherwise noted***

Committee Chair: Kasey Fanara
blondieshort24@yahoo.com



Hog Project

Committee Meeting

Wednesday, December 3

Wednesday, January 7



Project Meeting

Wednesday, December 10

Wednesday, January 14

****Committee Meetings are at 6:00 p.m.
Project Meetings are at 6:30 p.m.***

**Remind now needs to be downloaded
as an app and an email address needs
to be linked with it. The classroom code
for hog project is**

@hogpr

**PLEASE download the app so you
can get our announcements.**

Any questions call/text Dawn
716-969-4310

**Please note: A parent/guardian MUST
attend meetings with 1st and 2nd year
members.**

Committee Chair: Louis Smith
716-785-1890



Dairy Project

Committee Meetings

Thursday, January 15, 6:30 p.m.

Dairy Bowl Meetings (6:00 p.m.)

December 12, 19
January 9, 16, 23, 30

Dairy Buds

January 10, 1:00 p.m. at JCC

Fundraiser Forms Due

December 8 in 4-H Office
Pickup will be December 17, location TBA

Committee Chair: Bart Nickerson
bjnick@windstream.net

Rabbit Project



Committee Meetings

Thursday, December 4

Monday, January 5

Project Meetings

Thursday, December 11

Monday, January 12

****ALL meetings at 6:30 unless
otherwise noted****

Committee Chair: Kim Chapman
kchapman4574@gmail.com

**Public Presentations
Registration due January 5.**

Presentation Day January 24.



Dog Committee

Wednesday, December 10

Wednesday, January 15

Dog Project

Wednesday, December 17

Wednesday, January 21

**All Project and Committee Meetings
at 6:30 PM**

Committee Chair: Roxanne Young
ryoung6825@outlook.com



Market Poultry Project

Committee Meetings

January 6, 6:30 p.m.

Market Poultry Project Meetings

TBA



Goat Project

Committee Meetings

Monday, December 1

Goat Project Meetings

Monday, December 15

****ALL meetings are at 6:45 PM unless
otherwise noted****

Watch our Facebook page!

Committee Chair: Keith LaRoy

4-H Countywide Public Presentation Day



Saturday
January 24, 2026



Beginning at 9:00 AM



At JCC Carnahan Center

Registration Due by 1/5/2026

We encourage all 4-H youth to participate.

Club youth - please register with your club leaders.

Lone members - please register with Lisette:

Call 716-664-9502 ext. 214 or
Email Imc323@cornell.edu

Opportunity for make-up will be available, for extenuating circumstances only, on a limited first come, first serve basis. This will need to be scheduled by calling Lisette at the 4-H office.

PREPARE, SPEAK. SHARE. SHINE.



The public is welcome to attend as an audience for our Jr. and Sr. presentations.



CHAUTAUQUA
COUNTY

4-H



Master Gardeners

Master Gardener Book Club – 12/9

The second gathering will take place on **Tuesday, December 9th from 7pm – 8pm** via Zoom.

The link to join is in the weekly CCE Email Updates (or call 716-664-9502).

December's book is "Night Magic: Adventures Among Glowworms, Moon Gardens, and Other Marvels of the Dark" by Leigh Ann Henion.



Cornell Cooperative Extension
Chautauqua County

Sign up to learn more about gardening and becoming a Master Gardener!



Care of Christmas Poinsettias

Adapted from CCE-Nassau County Fact Sheet

Poinsettia, the traditional Christmas flower, is one of the most difficult plants to grow - even for the commercial grower. The problems encountered in growing are many. They include root rot, difficulty in flowering, scale insects, poor nutrition (which causes the leaves to drop) and over or underwatering. It is difficult for poinsettias to be grown in the home under normal house conditions. Temperatures are generally too high during the winter for the plants to set flowers effectively.

However, if you wish to try your hand at carrying over the poinsettia from this year to bloom again next year, here are some pointers that may be helpful to you.

1. Plants that are going to be carried over should be allowed to flower and kept in as good condition as possible before they are dried.
2. After the plants finish flowering, allow them to dry out to encourage dormancy. Then place the potted plants on their sides in a cool, dry cellar until April. The drying should not be so severe as to permit shriveling of the woody stems.
3. Remove the plants from storage in April bring them into the sunlight and keep them watered. Do not allow them to dry out once they have started to
4. grow, but don't over-water them, either. Prune two or three inches from the end of each stem.
4. The plants should be carried through the summer, either inside or outside, and feed them with a complete fertilizer such as 20-20- 20 about once a month. If they are put outside they can be plunged into the soil while in the pot.
5. As fall approaches (September 1) and night temperatures start to go below 65°F, the plants should be moved indoors.
6. Check plants for insects before bringing them indoors.
7. Place the plants in a sunny location in the house with a night temperature of about 65°F and a day temperature of 70-75°F. Keep moist and feed weekly with a 20-20-20 fertilizer (1 teaspoon/gallon).
8. Poinsettias form flower buds when the days are shorter than 12 hours. Beginning October 1, give the plants full sunlight during the day. Protect the plants from light every night by placing them in a dark closet between 5 pm and 8 am. Exposure to artificial light will inhibit flowering. After 40 days of this treatment (as slight coloration begins) the plants can be kept in a normally lighted room.
9. Continue to fertilize with the 20-20-20 water soluble fertilizer according to label directions



Winter Quick Tips December 2025

Cornell
Cooperative
Extension

Ways to Save at the Store

With grocery prices still being high, saving money on food may be important to your family. Follow these tips to help save money when going to the store.



1. Try not to shop when you are hungry. If you are hungry, you will be tempted to buy extras that are not on your list.
2. Buy fresh fruits and vegetables in small amounts that you are sure you can use while they are still fresh.
3. When they are on sale, buy larger quantities of fresh fruits and vegetables you use often. (Examples- onions, potatoes, apples). Fruits and vegetables sold in larger bags are usually cheaper and many can be stored for quite a while.
4. Choose vegetables and fruits in their simplest form. Pre-cut, pre-washed, ready-to-eat foods are convenient but cost more. Fruits and vegetables with special sauces and flavorings added usually cost more, and certainly have more fat and calories.

Feeding America



How can I find free holiday meal boxes?

- Contact your local food bank or pantry about free holiday meal boxes near you. Not every location offers these programs, but all provide ways to help families celebrate the holidays. They offer free groceries, fresh produce, and holiday food support in your area. The best way to learn about your options is to visit their website.

Who can receive food at a food pantry or meal programs?

- Anyone who needs extra help affording food can visit a food pantry or meal program. Some pantries or programs may have additional requirements, like living in a certain area.

Find your local pantry or holiday meal box by visiting:
www.feedingamerica.org/find-your-local-foodbank

Building Healthy Habits Recipe

Rice Bowl Southwest Style

Serving size 1 cup

Makes 2 cups

Ingredients:

1 teaspoon vegetable oil

1 cup chopped vegetables (try bell peppers, onion, corn, tomato, zucchini)

1 cup cooked brown rice

1 cup protein (beans, chicken, beef, tofu, or salmon)

1/8 teaspoon of each - garlic powder, oregano, cumin

2 tablespoons salsa, shredded cheese or low-fat sour cream

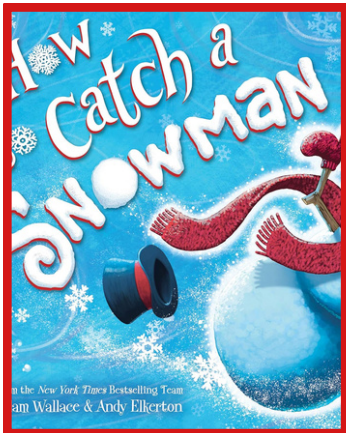
Directions:

1. Wash hands with soap and water.
2. Rinse fresh vegetables under running water before preparing.
3. In a medium skillet, heat oil over medium heat. Add vegetables and cook until tender-crisp or about 3-5 minutes.
4. Add cooked rice; cooked protein, garlic powder, oregano, and cumin, if desired. Heat through.
5. Divide rice mixture between 2 bowls. Top with salsa, cheese or sour cream and serve warm.
6. Refrigerate leftovers within 2 hours.

Notes: For a spicier dish, add chili powder, red pepper flakes, or taco sauce.



Nutrition Facts: Serving size: 1 cup, calories: 320; total fat: 12g; saturated fat: 3.5g; sodium: 410mg; total carbohydrate: 35g; added sugars: 0g; Protein: 19g; Calcium: 33mg; Potassium: 250mg, Vitamin C: 44mg Vitamin A: 52mcg
Source: FoodHero.org



Kids' Book Nook

With your child, visit your local library and borrow "How to Catch a Snowman" by Adam Wallace. After reading the book, ask how your child would catch a snowman!



Meet Your Educator

Name:

Extension:

Contact information:



The Chautauqua County Extension Connection (**USPS#101-400**)
is published monthly by Cornell Cooperative Extension of
Chautauqua County, JCC Carnahan Center
525 Falconer Street, PO Box 20
Jamestown, NY 14702-9608

**Periodical Postage Paid at
Jamestown, NY 14701.**

Cornell Cooperative Extension is Chautauqua County's link to Cornell University. Our purpose is to make available to the individuals, families, communities, and businesses of Chautauqua County the resources and research-generated knowledge of Cornell University. By identifying and addressing local needs, Cornell Cooperative Extension provides practical information to help people help themselves and develop their leadership potential. Please feel free to contact Cornell Cooperative Extension for more information.

*The "Extension Connection" is prepared by the CCE staff and is published monthly by Cornell Cooperative Extension - Chautauqua County. **If you have information for the "Extension Connection" it needs to be in the CCE office by the 10th of each month for the following month's issue.***

The views expressed in presentations made at CCE meetings or other CCE events are those of the speaker and not, necessarily, of CCE or its Board of Directors. Presentations at CCE events, or the presence of vendors at CCE events, do not constitute an endorsement of the vendor or speaker's views, products or services.

With regard to any information presented at any CCE event, CCE does not make any warranty, express or implied, including the warranties of merchantability and fitness for a particular purpose, and specifically disclaims any legal liability or responsibility for the accuracy, completeness, or usefulness of any information, apparatus, product, service or process presented and makes no representation that its use would not infringe upon privately owned or intellectual property rights such as Copyright, Trademark, Trade Dress etc.

The presence of a commercial vendor at a CCE event, and the presentation by any vendor of any information regarding any specific commercial products, process, or service by trade name, trademark, manufacturer, or otherwise, does not constitute or imply CCE's endorsement, recommendation, or favoring of such item or organization.

Any such material presented by any vendor in any format, without limitation, is for informational purposes only. Any potential customer of any vendor, who is present at a CCE event, is expected to conduct their own due diligence and assessment of the vendor, product, or services as appropriate for their needs.

The information herein is supplied with the understanding that no discrimination is intended and no endorsement by Cornell Cooperative Extension is implied. Please contact the Cornell Cooperative Extension - Chautauqua County office if you have any special needs.