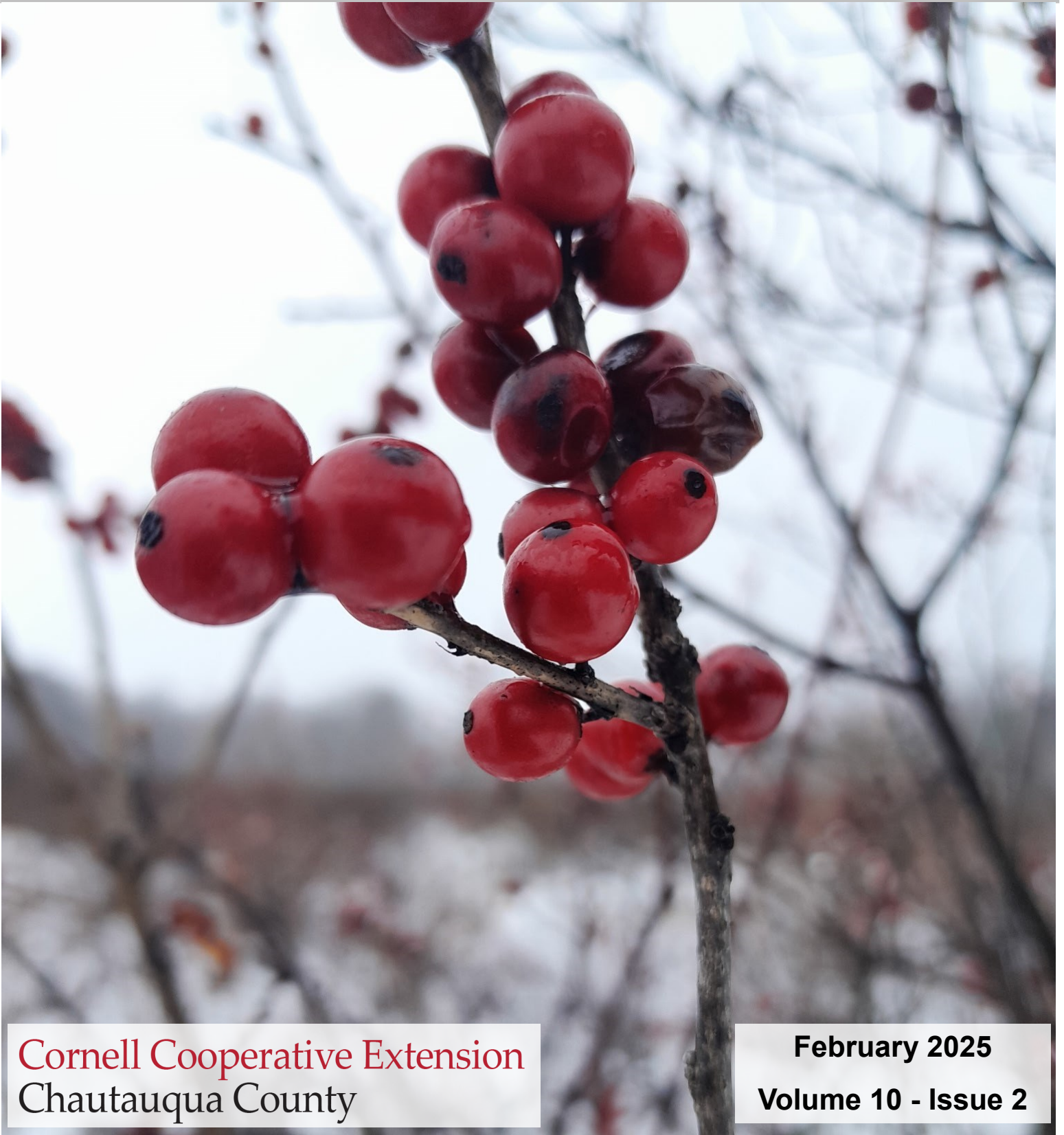


Cornell Cooperative Extension of Chautauqua County's

# Extension Connection



Cornell Cooperative Extension  
Chautauqua County

February 2025  
Volume 10 - Issue 2

## IN THIS ISSUE

Board and Association News	3
Agriculture	4-11
4-H/Youth Development	12- 16
Master Gardener	17
EFNEP - Building Healthy Habits (Expanded Food and Nutrition Education Program)	18-19

**COVER: Picture by Shannon Rinow !  
Reminder February is National Bird Feeding Month!**



**Your picture could be on our next cover!  
Send your submission to [lpc33@cornell.edu](mailto:lpc33@cornell.edu)**

### The Chautauqua County Extension Connection (USPS #101-400)

The Chautauqua County Extension Connection (USPS#101-400) is published monthly by Cornell Cooperative Extension of Chautauqua County. Subscription included in minimum of \$65 Program Participation fee. Periodical Postage Paid at Jamestown, NY 14701. "POSTMASTER: Send address changes to the: Chautauqua County Extension Connection at 525 Falconer St. JCC Carnahan Center, PO Box 20 Jamestown, NY 14702-0020."

### Cornell Cooperative Extension of Chautauqua County Staff Contact Information

**Emily Reynolds**, CCE Executive Director  
[eck47@cornell.edu](mailto:eck47@cornell.edu)  
716-664-9502 ext. 201

**Darcy Cramer**, Finance Associate  
[dlc284@cornell.edu](mailto:dlc284@cornell.edu)  
716-664-9502 ext. 208

**Lucia Conti**, Association Administrative Assistant  
[lpc33@cornell.edu](mailto:lpc33@cornell.edu)  
716-664-9502 ext. 209

**Lynne Wahlstrom**, 4-H Youth Educator  
[ilmw264@cornell.edu](mailto:ilmw264@cornell.edu)  
716-664-9502 ext. 212

**Josie Allen**, 4-H Development Educator  
[jla298@cornell.edu](mailto:jla298@cornell.edu)  
716-664-9502 ext. 216

**Lisette Cabrera**, 4-H Program Coordinator  
[lmc323@cornell.edu](mailto:lmc323@cornell.edu)  
716-664-9502 ext. 214

**Melissa Watkins**, Agriculture Educator  
[mew235@cornell.edu](mailto:mew235@cornell.edu)  
716-664-9502 ext. 203

**Molly Harvey**, SNAP Ed Nutrition Educator  
[mmh273@cornell.edu](mailto:mmh273@cornell.edu)  
716-664-9502 ext. 208

**Mary Ryder**, SNAP Ed Nutrition Educator  
[mer262@cornell.edu](mailto:mer262@cornell.edu)  
716-664-9502 ext. 217

**Wendy Alexander**, EFNEP Nutrition Educator  
[wa66@cornell.edu](mailto:wa66@cornell.edu)  
716-664-9502 ext. 221

**Linnea Haskin**, New York Food for New York Families  
[lmc373@cornell.edu](mailto:lmc373@cornell.edu)  
716-664-9502 ext. 210

**SWNY Dairy, Livestock, and Field Crops Program**  
CCE Chautauqua, @JCC Carnahan Center  
Jamestown, NY 14702  
716-640-0522  
[kaw249@cornell.edu](mailto:kaw249@cornell.edu)

**Lake Erie Regional Grape Program**  
6592 W. Main Road  
Portland, New York 14769  
716-792-2800

**Cornell Vegetable Program**  
480 North Main Street  
Canandaigua, NY 14424  
585-394-3977 ext. 426

**CCE - Chautauqua County**  
@ JCC Carnahan Center  
525 Falconer St. PO Box 20  
Jamestown, NY 14702-0020  
Phone: 716-664-9502 Fax: 716-664-6327  
[www.cce.cornell.edu/chautauqua](http://www.cce.cornell.edu/chautauqua)



# Association News

## Board of Directors

Randolph (Randy) Henderson - President  
Alyssa Porter - Vice President  
George Haffenden - Treasurer  
Dawn Betts- Secretary  
Emma Boutelle  
Jessica Brehm  
Chad Buck  
Suzanne Fasett-Wright  
Dinah Hovey  
Heather Gregory  
Sue Lindsey  
Louis Smith  
Pat Walker  
Fred Johnson—County Legislator  
Tom Nelson, County Legislator  
Renee Mooneyham - Extension Specialist

## Agriculture Program Committee

Derek Yerico, Dunkirk  
Katelyn Card-Allen, Jamestown  
Virginia (Ginny) Carlberg, Jamestown  
Andrew Campbell, Westfield  
Shannon Rinow  
Melissa Baideme

## 4-H Program Committee

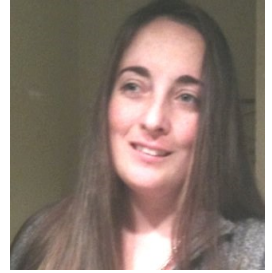
Betty Catanese, Stockton  
Laura LeBarron, Silver Creek  
Jan Schauman, Jamestown  
Keith LaRoy, Kennedy  
Lindsay Eckman, Frewsburg  
Taylor Young, Panama

## 4-H Program Advisory Chairpersons

Joyce Edwards	Clothing and Textiles
Bart Nickerson	Dairy
Aaron Carlberg	Goat
Roxanne Young	Dog
David Schauman	Beef, Meat Animal Sale
Kasey Fanara	Horse
Marie Warner	Snack Bar
Jamie Smith	Exhibition Poultry
Melissa Winton	Market Poultry
Kim Chapman	Rabbit
Louis Smith	Hog
Shawn Huntington	Sheep
Cassie Skal	Teen Ambassadors

## From the Office of the Executive Director

February...BRRR... what a great month to make plans for warmer weather, read a good book, or attend a professional development workshop. Ok, I know lots of you still have outside responsibilities and some enjoy the cold! Whatever you choose this month I hope it makes you smile every day! At CCE Chautauqua we are smiling about upcoming programming. We have LEAF (Learn Empower Achieve Farm) workshops set up for the spring, youth programming happening in schools and libraries across the county, and we are having the 4-H Green Tie Affair Dinner again!! We hope you can join us on Sunday, February 23rd at the Chautauqua Harbor Hotel. Tickets are on sale now. Call our office to get yours today 716-664-9502, Ext. 212. We also have several nutrition classes and more happening all month. If you would like regular updates about our programs and activities, please subscribe online or call the office today for a subscription brochure.



We have been busy behind the scenes working on our internal capacity study and growing our expertise to serve our community. If you have suggestions, we always welcome you to share your thoughts with us. We have received three grants in the last 2 weeks and will hopefully be able to make a full announcement in February including some open positions to seek the greatest new CCE Chautauqua employees.

Cornell Cooperative Extension of Chautauqua County has a rich and diverse history of supporting the food system in Chautauqua County and throughout the region. From supporting producers to educating consumers there are few areas of the Food System not touched by CCE Programming. CCE is also known for its ability to connect and collaborate with the various organizations in the county successfully serving the needs of residents. Continued expansion of capacity for CCE hopes to increase our collaboration abilities across Chautauqua County.

**Looking for Agriculture and Gardening updates in between newsletter publications?**

**Find the latest on our website!**

<https://chautauqua.cce.cornell.edu/agriculture/ag-news-and-updates>

Also, find us on Facebook at <https://www.facebook.com/CCEChautauqua/>

Or call CCE Chautauqua at (716)664-9502

Cornell Cooperative Extension | Chautauqua County



# Cornell Cooperative Extension

Southwest NY Dairy, Livestock and Field Crops Program

Questions? Contact  
Katelyn Walley  
Farm Business Management Specialist  
716-640-0522  
kaw249@cornell.edu



## SETTING YOUR FARM FINANCIAL RESOLUTIONS

The start of a new year is the perfect time for farm businesses of all shapes and sizes to reset their financial management. Join this INTERACTIVE workshop to start your farm off on the right path towards financial success in 2025. Topics include Record Keeping, Tax Management, Financial Goals, and Strategies for Profitability. Participants will receive handouts that can be used throughout the year and a quarterly farm financial checklist.



Workshops are Saturdays from 9am – 11am at the following dates and locations. Each workshop is the same, so choose the one that works best for you!



### 1/25 – Erie County

CCE Erie, Roycroft Campus,  
21 South Grove Street, East Aurora, NY

### 2/15 – Steuben County

CCE Steuben, County Annex Building,  
20 East Morris Street, Bath, NY



### 2/1 – Allegany County

CCE Allegany,  
5435 County Road 48, Belmont, NY

### 2/22 – Chautauqua County

CCE Chautauqua, Jamestown Community College,  
525 Falconer Street, Jamestown, NY



### 2/8 – Cattaraugus County

CCE Cattaraugus, Ellicottville Town Center,  
28 Parkside Drive, Ellicottville, NY

### \*Fri, 2/28 – Virtual Webinar

6pm - 8pm. Participants will not receive printed handouts, a sign on link will be emailed.

**REGISTRATION IS REQUIRED BUT PARTICIPATION IS FREE.**

**EVERY FARM WILL RECEIVE USEFUL HANDOUTS AND WILL BE NOTIFIED IF THE EVENT IS RESCHEDULED DUE TO WEATHER.**

**To Register: visit [www.tinyurl.com/syffr25](http://www.tinyurl.com/syffr25) or call Kelly at 585-268-7644 ext 10 by 12noon on the prior Thursday.**

*Cornell Cooperative Extension is an equal opportunity, affirmative action educator and employer. SWNYDLFC is a partnership between Cornell University and the Five Cornell Cooperative Extension Associations of Allegany, Cattaraugus, Chautauqua, Erie, and Steuben Counties.*





## Farmers!

**Are you looking for more information about pricing  
Consumer experiences, and ways to improve market  
Sales?**

Check out one or both of these Classes!

### **6:00: Creating and Pricing Consumer-friendly Meat with MeatSuite.**

In this session we will cover an introduction to MeatSuite. Then we'll share how to make bulk meat sales more approachable for first-time buyers including a demonstration of MeatSuite's newest tool, Bundle Builder. Bundle Builder allows you to easily assemble "bulk bundles" and set prices.

### **7:30: Farmers Market Sales Data: Using the Customer Experience and Pricing to Improve Market Sales Performance.**

In this session we will cover the results of Cornell research on customer spending and prices at farmers markets. Learn practical ways to increase customer spending and daily sales. This session is appropriate for farms selling, fruit & vegetables, meat, dairy, and eggs as well as other farm products.

**Presenter:  
Matt LeRoux,  
Cornell**

Tuesday, March 11th, 6:00 – 8:30pm

CCE Chautauqua  
JCC Carnahan Center  
(with dinner at 7)

Cost - \$10/farm (includes dinner)

To Register, call/email Kelly, at [klb288@cornell.edu](mailto:klb288@cornell.edu) 585-268-7644  
ext 10 or

register here: <https://swnydlfc.cce.cornell.edu/event.php?id=2538>



## FENCING 101

A FREE Live Seminar for Veterans

Wednesdays,  
March 19<sup>th</sup> and  
March 26<sup>th</sup>, 2025

6pm – 7:30pm  
Online webinars via Zoom

Registration is REQUIRED by visiting  
[tinyurl.com/FarmOpsFence1](https://tinyurl.com/FarmOpsFence1)  
or call Kelly at 585-268-7644.

Cornell Cooperative Extension  
Southwest NY Dairy, Livestock and Field Crops Program



### Learn The Basics of Choosing and Installing the RIGHT Livestock Fencing for Your Farm or Homestead!

How do you choose fencing that's right for you and your animals? How do you know which products you'll need to purchase and install? Join Cornell Cooperative Extension Specialists, Amy Barkley and Katelyn Walley, to learn more about fencing type, installation, maintenance, cost and product evaluation, and time requirements. This is a two part series.

Cornell Cooperative Extension's Southwest New York Dairy, Livestock, and Field Crops Program is a partnership between Cornell University and the five Cornell Cooperative Extension Associations of Allegany, Erie, Cattaraugus, Chautauque, and Steuben Counties. CCE is an employer and educator recognized for valuing AA/EEO, Protected Veterans, and Individuals with Disabilities and provides equal program and employment opportunities. For accommodations and accessibility concerns, please contact Katelyn Walley-Stoll by calling 716-640-0522.



Farm Ops

Farm Ops aims to support military service members and veterans who desire to explore and/or pursue agricultural vocations. Visit us on the web at: [smallfarms.cornell.edu/projects/farm-ops/](https://smallfarms.cornell.edu/projects/farm-ops/)

This is event is for NYS Veterans.

## BASICS OF BEEKEEPING

A FREE Live Seminar for Veterans

Wednesday,  
February 26<sup>th</sup>, 2025

6pm – 7:30pm  
Online webinar via Zoom

Registration is REQUIRED by  
visiting [tinyurl.com/FarmOpsBees](https://tinyurl.com/FarmOpsBees)  
or call Kelly at 585-268-7644.

Cornell Cooperative Extension  
Southwest NY Dairy, Livestock and Field Crops Program



### Find out if beekeeping is right for you!

Are you curious about the art of beekeeping and its vital role in our ecosystem? Join us for an engaging seminar where we'll explore the basics of caring for bees, from hive management to harvesting honey. This session, led by experienced beekeeper and livestock management specialist with Cornell Cooperative Extension, Amy Barkley, will equip you with valuable insights to start your beekeeping efforts.

Cornell Cooperative Extension's Southwest New York Dairy, Livestock, and Field Crops Program is a partnership between Cornell University and the five Cornell Cooperative Extension Associations of Allegany, Erie, Cattaraugus, Chautauque, and Steuben Counties. CCE is an employer and educator recognized for valuing AA/EEO, Protected Veterans, and Individuals with Disabilities and provides equal program and employment opportunities. For accommodations and accessibility concerns, please contact Katelyn Walley-Stoll by calling 716-640-0522.



Farm Ops

Farm Ops aims to support military service members and veterans who desire to explore and/or pursue agricultural vocations. Visit us on the web at: [smallfarms.cornell.edu/projects/farm-ops/](https://smallfarms.cornell.edu/projects/farm-ops/)

This is event is for NYS & NJ Veterans.



# Coming soon! LEAF Spring 2025 Class Schedule!

## A SMART CHOICE

Choosing the right insurance is about more than just getting the quickest quote. For more than a century, **AMERICAN NATIONAL** has provided reliable service and knowledgeable advice from local agents who take the time to listen and understand your unique needs.



**GEORGE HAFFENDEN** LUTCF  
AGENT

716.386.5393

[ghaffenden@American-National.com](mailto:ghaffenden@American-National.com)

PO Box 300 Strykersville, NY 14145

<https://an.insure/georgehaffenden>

Products and services may not be available in all states. Terms, conditions and eligibility requirements will apply. Life insurance and annuity products underwritten by American National Life Insurance Company of New York, Glenmont, New York. Property and casualty products and services may be underwritten by Farm Family Casualty Insurance Company or United Farm Family Insurance Company, both of Glenmont, New York.

License 000000

14-065.87136.V4.03.20



# Dairy Scholarship Opportunities:

## Holstein

**Calf:** <https://www.nyholsteins.com/calf-scholarship.html>

**Scholarship:** <https://www.nyholsteins.com/scholarship-application.html>



## Jersey

<https://newyorkjerseys.usjerseyjournal.com/juniors/>



## Guernsey

<https://nyguernseybreeders.com/our-association/state-award-applications/>



## Ayrshire

<https://www.usayrshire.com/youth-corner>

## Brown Swiss

<https://www.facebook.com/nybrownswissassociation>



## Milking Shorthorn

<https://milkingshorthorn.com/juniors/#junior-awards>



## LARRY ROMANCE & SON, INC.

Parts - Sales - Service

***Come see us for all your Vineyard - Dairy - Construction & Consumers Needs***

SHERIDAN, NY • 2769 ROUTE 20  
(716) 679-3366 • [tractorsales@netsync.net](mailto:tractorsales@netsync.net)

ARCADE, NY • 543 W. MAIN ST.  
(585) 492-3810

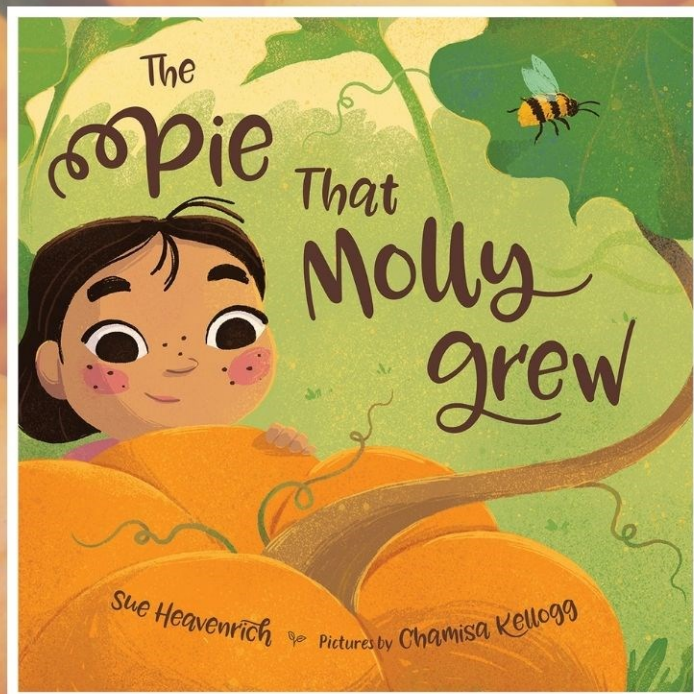
[www.larryromanceandson.com](http://www.larryromanceandson.com)

Source: <https://extension.illinois.edu/herbs/rosemary>



Cornell Cooperative Extension of Chautauqua presents:

# 2025 Agricultural Literacy Week March 17th-21st



Featuring:  
***"The Pie That Molly Grew"***  
by Sue Heavenrich

March 17-21st is Agricultural  
Literacy Week!

Volunteers will read an  
agricultural book to students  
in schools across Chautauqua  
County in an effort to increase  
agricultural education.

Agricultural Literacy Week is a  
celebration of our county's  
legacy and the hard work of  
those in our number one  
industry who produce healthy,  
local food, 365 days a year!

To schedule a volunteer to read at  
your school, become involved as a  
reader or book donor, or for more  
information, please contact Josie  
Laurie at CCE Chautauqua at 716-  
664-9502 ext. 216 or email  
jla298@cornell.edu.



Cornell Cooperative Extension  
Chautauqua County



New York  
Agriculture  
in the Classroom



Chautauqua County Farm Bureau®  
is working hard every day to  
protect the future of agriculture  
and our rural landscape



Join Today!  
NYFB.org 800-342-4143



**Hazard Analysis Critical Control Point (HACCP)  
Training Program for Meat and Poultry Processors**

February 17 & 18th, 2025 Cornell University, Ithaca, NY

Program participants will receive hands-on experience developing a HACCP plan. The course is recommended for meat and poultry plant management, HACCP coordinators, quality assurance/control personnel, sanitation management, line supervisors, and line operators employed by meat and poultry processing plants. The course is certified by the International HACCP Alliance and meets USDA requirements for HACCP training.

Spanish-to-English translation assistance for Spanish-speaking attendees is available.

**Registration fee:**

\$525/person before Jan. 17  
\$550/person after Jan. 17  
\$400/person if company registers 3 or more employees.

NYS processor discount of \$100 per person for the first 10 NYS processors that register.

A light breakfast and lunch is included each day.

Register by Friday, February 7th at  
<https://event.me/kz4LBk>



**Instructors:**

Martin Bucknavage, Penn State  
Jonathan Campbell, Penn State  
Jessica Waltemyer, Cornell

This material is based upon work supported by USDA/NIFA under Award Number 2022-70419-38562.



**DISCOVER  
AN ENTIRE  
ORGANIZATION  
WORKING FOR  
YOUR SUCCESS.**

Nobody serves your ag credit needs like Farm Credit East.

Farm Credit East was made in agriculture. It's all we do. So every product, every service and every person is dedicated to meeting your financial needs and growing your success. We know agriculture, we understand your business needs, and work to achieve your goals.

Discover the difference at Farm Credit East.

[farmcrediteast.com](http://farmcrediteast.com) | 800.562.2235



- Loans & Leases
- Financial Record-Keeping
- Payroll Services
- Profitability Consulting
- Tax Preparation & Planning
- Appraisals
- Estate Planning
- Beginning Farmer Programs
- Crop Insurance





# High quality milk with low SCC? “We spray all fresh cows with Udder Comfort.”

— Jared Daubert



See us at  
**PA DAIRY SUMMIT**  
State College, Feb. 5-6  
**NY FARM SHOW**  
Syracuse, Feb. 20-22



**JA-LA-DA DAIRY, MILLMONT, PENNSYLVANIA**  
Jared and Laura Daubert  
125 Brown Swiss, Holsteins, and Red & Whites  
RHA 25,500M and 70,000 SCC

With somatic cell counts averaging 70,000 and earning milk quality awards through their co-op, we wanted to know what the Dauberts do to produce high quality milk. “We spray all fresh cows with Udder Comfort™ to get edema out when they calve in. We also use it on any mastitis, and we focus on cleanliness and strict milking protocols,” says 4th generation dairyman Jared Daubert.

Jared grew up in central Pennsylvania, steeped in Brown Swiss genetics, earned his animal science degree at Penn State and worked for several large farms before he and Laura and their 4 children began milking 125 Brown Swiss, Holsteins and Red & Whites on their first-generation JA LA DA Dairy near Millmont, Pa. He loves seeing genetic improvement and seeing his kids grow up learning to take care of things.

“I have used Udder Comfort quite a long time, getting it on fresh cows as fast as we can, and on some pre-calving heifers. We see a lower mastitis incidence when we are consistent on this,” he reports.

## UDDER COMFORT™

Quality Udders Make Quality Milk

### Her Comfort is Our Passion!

Softer udders ⇨ Faster milking

Better quality ⇨ MORE MILK

1.888.773.7153

[uddercomfort.com](http://uddercomfort.com)



Helping reach  
their potential  
since  
1998!



For external application to the udder only, after milking, as an essential component of udder management. Always wash and dry teats thoroughly before milking.



WHAT FARMS  
ARE SPENDING ON  
**Marketing**  
& HOW IT  
IMPACTS SALES

PRICE  
**Products**  
FOR EVEN BIGGER  
**Profits**

THE RETURN ON  
**Investment**  
OF SELLING AT  
FARMERS MARKETS



## REGISTER NOW! **FREE** 2025 TRAINING EVENTS

Last year, CCE Broome County and the Farmers Market Federation of NY launched one of the largest surveys to date of producers who sell at farmers markets. From the data, regional benchmarks have been set that farmers can use to price their products to maximize their profitability. **Now is your chance to gain valuable insights to boost profitability in 2025!**

- **TRAINING EVENTS ARE 1.5 HOURS**
- **6 EVENTS IN FEBRUARY & MARCH**
- **SPECIFIC BENCHMARKS FOR YOUR REGION**
- **CHOOSE IN-PERSON OR VIA ZOOM**
- **100% FREE TO ATTEND!**

### REGISTER HERE:

<https://fmbenchmarks.my.canva.site/2025>



Cornell Cooperative Extension  
Broome County



National Institute of Food and Agriculture  
U.S. DEPARTMENT OF AGRICULTURE



NORTHEAST  
EXTENSION  
RISK  
MANAGEMENT  
EDUCATION

This material is based upon work supported by USDA/NIFA under Award Number 2023-70027-40447.

## February 2025

Sunday	Monday	Tuesday	Wednesday	Thursday	Friday	Saturday
						1
2	3 <b>Rabbit Committee</b> 6:30 PM	4 <b>Goat Project</b> 6:30 PM	5 <b>Hog Committee</b> 6:00 PM <b>Exhibition Poultry Committee</b> 6:30 PM	6 <b>LEAF Jr. Program Committee</b> 6:30 PM	7 <b>Rabbit Project</b> 6:30 PM <b>Dairy Quiz Bowl</b> 6:00 PM	8 <b>Dairy Bud Meeting</b> 1:00 PM
9	10 <b>Market Poultry Project</b> 6:00 PM <b>Market Poultry Committee</b> (following Project)	11 <b>Horse Committee</b> 6:30 PM	12 <b>Hog Project</b> 6:30 PM <b>Dog Committee</b> 6:30 PM	13 <b>Teen Ambassador Meeting</b> 6:30 PM <b>Beef Committee</b> 6:30 PM <b>Family Consumer Science Committee</b> 2:30 PM	14 <b>Dairy Quiz Bowl</b> 6:00 PM	15
16	17 <b>President's Day</b> 	18	19 <b>Dog Project</b> 6:30 PM	20	21 <b>Dairy Quiz Bowl</b> 6:00 PM	22
23 <b>Green Tie Affair</b>	24	25 <b>Goat Committee</b> 6:30 PM <b>Horse Project</b> 6:30 PM	26 <b>Exhibition Poultry Project</b> 6:30 PM	27 <b>Sheep Committee</b> 6:00 PM <b>Sheep Project</b> 7:00 PM	28 <b>Dairy Quiz Bowl</b> 6:00 PM	

## March 2025

Sunday	Monday	Tuesday	Wednesday	Thursday	Friday	Saturday
						1
2	3 <b>Rabbit Committee</b> 6:30 PM	4 <b>Goat Project</b> 6:30 PM	5 <b>Hog Committee</b> 6:00 PM <b>Exhibition Poultry Committee</b> 6:30 PM <b>Beef Project</b> 6:30 PM	6 <b>Rabbit Project</b> 6:30 PM	7	8
9	10 <b>LEAF Jr. Program Committee</b> 6:30 PM	11 <b>Horse Committee</b> 6:30 PM	12 <b>Hog Project</b> 6:30 PM @ Coffaro's <b>Dog Committee</b> 6:30 PM	13 <b>Dairy Committee</b> 6:30 PM <b>Beef Committee</b> 6:30 PM	14	15
16	17	18	19 <b>Dog Project</b> 6:30 PM	20 <b>Sheep Committee</b> 6:00 PM <b>Sheep Project</b> 7:00 PM	21	22 <b>Teen Ambassador Pancake Fundraiser</b> @Applebee's
23	24 <b>Goat Committee</b> 6:30 PM	25	26 <b>Exhibition Poultry Project</b> 6:30 PM	27 <b>MAS Committee</b> 6:30 PM	28	29
30	31					





## Interested in becoming a Teen Ambassador?

Come on out and check out a meeting!  
February 13th @ JCC

**\*ALL meetings are at 6:30 PM unless otherwise noted**  
Contact: Cassie Skal  
[spffarmgirl4@yahoo.com](mailto:spffarmgirl4@yahoo.com)



## Hop, Swim, and Crawl with the YNOE PWT

Join us for a fun and educational virtual series on amphibians, designed for youth across New York State! From February 26th to March 19th, 2025, each Wednesday evening from 6:30 p.m. to 7:30 p.m., participants will dive into the fascinating world of amphibians, learning about their unique characteristics, habitats, and conservation. These interactive sessions will feature expert guest speakers, exciting hands-on activities, and opportunities to ask questions. Don't miss this chance to discover the amazing amphibians that call New York home!

- Dates: Wednesday nights at 6:30pm February 26th, and March 5th, 12th, and 19th
- No cost to participate.
- Who can participate: Cloverbuds, 4-H members, 4-H parents, volunteers, and youth

Registration is necessary.

Click on this link:  
[https://reg.cce.cornell.edu/YNOE-Amphibians\\_208](https://reg.cce.cornell.edu/YNOE-Amphibians_208)



OR Scan this QR Code



Cornell Cooperative Extension is an equal opportunity, affirmative action educator and employer.

### Hog Field Trip to Coffaro's

If you would like to attend the HOG Project meeting on March 12th at Coffaro's in Sugargrove, you need to sign up at the January or February Hog project meetings



### Leaf JR. Sewing Series—Pillowcase

February 6th 6:30pm @JCC Carnahan Center

Thank you to those who registered for the class! It is full and not accepting any more participants.

Thank you to Amber Laurie of the Concord Quilting Studio and Nancy Johnson for putting on this class!

### Hog Project Apparel <https://chautauqua4h.spiritsale.com>

If you're interested in buying hog project shirts, sweatshirts, and hoodies, check out the link above. The storefront closes February 28, 2025 so don't wait!



## NYS 4-H EDUCATIONAL ZOOM SESSIONS:

Join us for our yearly NYS 4-H Horse Educational Event zoom series! Come learn directly from our coaches about our contests and how to study/prepare!

Registration closes  
January 3rd, 2025.

We will be meeting:  
January 6, 13, 20, 27  
February 3, 10, 17, 24

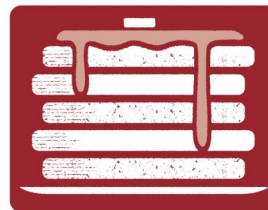
REGISTRATION LINK:  
[HTTPS://REG.CCE.CORNELL.EDU/EDUCATIONALZOOMSESSIONS\\_127](https://reg.cce.cornell.edu/EducationalZoomSessions_127)



QUESTIONS?  
DIRECT THEM TO  
JESSICA TYSON:

Jessica Tyson

Email: [jms943@cornell.edu](mailto:jms943@cornell.edu)



## Flapjack FUNDRAISER

Short Stacks for a Tall Cause

You're Invited to an Applebee's® Flapjack Fundraiser Event to support

### 4-H Teen Ambassador

Tickets: \$10    Date: 03/22/25    Time: 8am - 10am

See organization for ticket purchase prior to event.

For Ticket Purchases Contact  
Cassandra Skal  
(814) 790-3509  
[spffarmgirl4@yahoo.com](mailto:spffarmgirl4@yahoo.com)

Applebee's Location For Event  
340 East Fairmount Avenue  
Lakewood, NY 14750-2134  
(716) 763-3500

## 2025 NYS 4-H ANIMAL CRACKERS

MAY 3, 2025

@ CORNELL UNIVERSITY



### THIS YEARS SPECIES INCLUDE:

- DAIRY
- GOATS (DAIRY AND MEAT)
- RABBITS
- POULTRY



SAVE THE DATE

Watch for more information or visit -  
<https://cals.cornell.edu/nys-4-h-animal-science-programs/state-events/programs/animal-crackers>



# 2025 4-H Career Explorations

## Quick Facts

**Dates:** Wednesday, June 25 to Friday, June 27, 2025

**Location:** Cornell University

**Arrival:** 11:30 AM or 3:30 PM on Wednesday

**Program Ends:** 2:00 PM on Friday

Open to all NYS youth entering 8th grade and up.

**Registration:** Information available in April. Closes May 15 or when programs are full.

**Cost:** TBD

Note: Some CCE Associations charge youth additional fees to cover transportation & chaperone expenses. Some scholarship funds available. See [Registration section](#) for more details.

**Program Tracks:**

**University U:** teens entering 8th grade and up

**Focus for Teens:** teens entering 10th grade and up

## What's New

Focus Assistant Applications open

- Apply here by February 24, 2025
- More information in the [Staff section](#)

2025 Program Changes

- New schedule with two arrival times to accommodate end-of-year exams
- Draft schedule and campus life details shared so far. Details will be confirmed in April.



## Dairy Bud Meeting

Saturday, February 8th at 1pm at JCC

The second dairy bud meeting will be held Saturday February 8th at 1PM at JCC. Dairy buds will be learning about the journey of milk from farm to table and getting to taste test dairy products.

## SAVE THE DATE

2025 MARCH DOG MADNESS  
 MARCH 8TH, 2025

WILL BE HELD ON CORNELL CAMPUS

MORE INFORMATION COMING IN THE NEW YEAR



NYS 4-H LIVESTOCK

## 2025 NYS 4-H LIVESTOCK SUMMIT

JANUARY 29TH TO FEBRUARY 26TH @ 7 P.M. VIA ZOOM

- January 29th - Selection of your 4-H Project Animal. Seth Ebert- Ohio State ATI Judging Coach and Animal Science Professor
- February 5th - Getting there Safely, Trailering 101! Jonathon Lippert, Lippert Trucking
- February 12th - Sheep and Goat Management Strategies! Jessica Waltemyer, NYS Small Ruminant Extension Specialist
- February 19th - Tic(S) Tock: Increasing Risk of Ticks on Livestock Joellen Lampman-IPM Extension Support Specialist
- February 26th - Beef 101- Keys to Raising your Beef Project Adam Murray- NYS Extension Beef Specialist



To Register scan or visit link below:  
<https://cornell.zoom.us/join/zoom/register/tJUufumqrToIGNKQI5vnuKd3vnHnin8dNPmW>

For more information contact Brian Aukema at  
[bjat14@cornell.edu](mailto:bjat14@cornell.edu)

## NYS 4-H Virtual Dairy Bowl Practices!

Join youth from across the state on Thursdays in January & February from 7 - 8pm and participate in virtual dairy bowl practices, hosted by the NYS 4-H Dairy Committee.

- January 9
- January 23
- February 6
- February 20
- February 27



Register here:  
<https://bit.ly/4fi7sQP>

## 4-H VOLUNTEER CONNECTIONS- Building connections is essential for your success as a 4-H volunteer

Date & Time Feb 19, 2025 06:30 PM in Eastern Time (US and Canada)

Description 4-H has a rich history filled with traditions and vibrant community partnerships. As a 4-H volunteer, while it may seem challenging to navigate the organization and feel connected to the broader 4-H community, you have the power to make a difference. Join us to learn how dedicated 4-H volunteers have faced these challenges head-on through uplifting social gatherings, informal mentoring, and strong community connections. Enhance your leadership skills by building meaningful connections that inspire and empower.

Register at: <https://bit.ly/MEVOL25>



# CHAUTAUQUA COUNTY 4-H 11TH ANNUAL GREEN TIE AFFAIR

**SUNDAY, FEBRUARY 23RD, 2025**  
PRESALE TICKETS AVAILABLE NOW THROUGH FEBRUARY 13TH

## LOCATION

CHAUTAUQUA  
HARBOR HOTEL  
10 DUNHAM AVE,  
CELORON, NY  
14720



PROCEEDS  
BENEFIT  
CHAUTAUQUA  
COUNTY 4-H  
YOUTH  
DEVELOPMENT  
PROGRAMS



PRESALE: \$25      DOOR TICKET (LIMITED): \$30  
TABLE (10 SEATS) \$275

BASKET RAFFLE  
& BAKE SALE  
3:00 PM

DINNER  
5:00 PM

PIE AUCTION  
TO FOLLOW  
DINNER

CORNELL COOPERATIVE EXTENSION PROVIDES EQUAL PROGRAM AND EMPLOYMENT OPPORTUNITIES

## Committees Looking for Members

We have several committees looking for more members.

- Program Committee
- Livestock species committees

If you are interested in serving on a committee, please email a letter of intent to [chautauqua4h@cornell.edu](mailto:chautauqua4h@cornell.edu)

## Meat Animal Sale Youth

Consider making your arrangements for your extra animals early this year. There will be ABSOLUTELY no animals leaving on the slaughter trucks that have not gone through the meat animal sale. All extra will be leaving after 3:00pm on Sunday on their own trailers.

## ATTENTION: 4-H ANIMAL BARN

Please check with the office before ANY barn set-up dates are picked. The fairgrounds is rented out a lot in the spring and early summer. So, please check first before set up date is announced to assure no one else will be on the fairgrounds.

*The sooner you notify the 4-H office, the better!*

## THINGS NEEDED!

- Baskets for raffle
- Bake Sale Items
- Centerpieces

If you have any interest email  
[Lynne.lmw264@cornell.edu](mailto:Lynne.lmw264@cornell.edu) or  
call 716-664-9502 ext. 212

## March LEAF Jr. Class: Winter Sowing and Microgreens

When: March 10th, 6:30-8:30 at JCC Carnahan  
Center



Join Chautauqua County Master Gardeners and 4-H to learn how to grow tasty microgreens and start seeds for your garden through upcycling! Cost to be announced at least 2 weeks prior to event. Please contact the 4-H office, check our website, and follow our social media for more updates and information.

## Save the date for the Chautauqua County Beef Classic!

*May 3, 2025*

*Chautauqua County Fairgrounds*

Sponsorship forms are out now.

If you have any questions or would like to sponsor the show, contact Julie Covert at (716) 499-9173 or [jcoverts@windstream.net](mailto:jcoverts@windstream.net)



# Animal Project News

## Exhibition Poultry Project

**Committee Meeting**  
Wednesday, February 5th  
Wednesday, March 5th

**Project Meetings**  
Wednesday, February 26th  
Wednesday, March 26th

**\*ALL meetings are at 6:30 PM unless otherwise noted**



Committee Chair: Jamie Smith  
smith\_jamie@mac.com



## Beef Project

**Committee Meetings**  
Thursday, February 13th  
Thursday, March 13th

**Project Meetings**  
Wednesday, March 5th

**\*ALL meetings are at 6:30 unless otherwise noted\***

Committee Chair: Dave Schauman  
chautcobeeffprogram@gmail.com



## Sheep Project

**Committee Meetings**  
Thursday, February 27th  
Thursday, March 20th

**Project Meetings**  
Thursday, February 27th  
Thursday, March 20th

**\*All committee meetings at 6pm and project meetings at 7pm unless otherwise noted\***

Committee Chair: Shawn Huntington  
shuntington@randolphcsd.org



## Horse Project

**Committee Meetings**  
Tuesday, February 11th  
Tuesday, March 11th

**Project Meetings**  
Tuesday, February 25th

**\*ALL meetings are at 6:30 PM unless otherwise noted**

Committee Chair: Kasey Fanara  
blondieshort24@yahoo.com

## Hog Project



**Committee Meetings**  
Wednesday, February 5th  
Wednesday, March 5th

**Project Meetings**  
Wednesday, February 12th  
Wednesday, March 12th @ Coffaro's

**\*All meetings are at 6:30 PM unless otherwise noted.**

**Please note:** One parent/guardian MUST attend meetings with their 1st and 2nd year members.

Committee Chair: Louis Smith  
716-785-1890



## Dairy Project

**Committee Meetings**  
Thursday, March 13th  
6:30 PM

**Dairy Bud Meetings**  
Saturday, February 8th  
1:00 PM @ JCC

## Dairy Quiz Bowl Meetings

Friday, February 7th  
Friday, February 14th  
Friday, February 21st  
Friday, February 28th

Committee Chair: Bart Nickerson  
bjnick@windstream.net

## Rabbit Project

**Committee Meetings**  
Monday, February 3rd  
Monday, March 3rd

**Project Meetings**  
Friday, February 7th  
Thursday, March 6th

**\*ALL meetings at 6:30 unless otherwise noted\***



Committee Chair: Kim Chapman  
kchapman4574@gmail.com



## Dog Project

**Committee Meetings**  
Wednesday, February 12th  
Wednesday, March 12th

**Project Meetings**  
Wednesday, February 19th  
Wednesday, March 19th

All Project and Committee Meetings  
at 6:30 PM  
Committee Chair: Roxanne Young  
roxy6825@windstream.net

Any changes will be posted on Remind

## 4-H Meat Animal Sale Committee

**Committee Meeting**  
Thursday, March 27th  
6:30 pm @ JCC

## 4-H Family Consumer Science Committee

**Committee Meeting**  
Thursday, February 13th  
2:30 pm @ JCC

## 4-H Program Committee

Thursday, February 6th  
6:30 pm @ JCC  
Monday, March 10th  
6:30 pm @ JCC

## 4-H Teen Ambassador Meeting

Thursday, February 13th  
6:30 pm @ JCC

## Goat Project

**Committee Meetings**  
Tuesday, February 25th  
Monday, March 24th

**Project Meetings**  
Tuesday, February 4th  
Tuesday, March 4th

**\*ALL meetings are at 6:30 PM unless otherwise noted\***

**Watch our Facebook page!**

Committee Chair: Aaron Carlberg  
216-408-9892



## Market Poultry Project

**Committee Meetings**  
Monday, February 10th  
(following Project Meeting)



**Project Meetings**  
Monday, February 10th  
6:00 PM

Committee Chair: Melissa Winton  
Melissa\_deck@yahoo.com



# **SAVE THE DATE!**

# **Master Gardener Symposium**



***MAY 3, 2025, JCC CARNAHAN CENTER  
MORE INFORMATION IS COMING SOON!***



**Building**  
Healthy Habits

# Winter Quick Tips

Cornell  
Cooperative  
Extension



## Cultural Corner

Celebrate Black History in February! Learn about contributions and achievements Black Americans made to society and how they shape our world today. Check locally to find Black History Month activities to attend with your family.



## Pump up Your Heart Health!

Having a healthy heart can help prevent heart disease, including high blood pressure, high cholesterol, stroke, and heart attack. Heart disease is a goal for everyone because heart disease can start early in life. A heart-healthy diet includes a variety of colored vegetables and fruit, whole grains and products made from whole grains, low-fat milk and cheese, and lean, unprocessed protein, like chicken, eggs, beans, and fish. When buying groceries, check the Nutrition Facts Label and choose foods with little or no added sugars. Look for ways to move your body more, such as housework, walking the dog, pushing the baby stroller, or shoveling snow. These activities all help to keep your heart healthy.

## What's in Season

In February, look for different citrus fruits like oranges and tangerines; or produce that stores well like apples, cabbage, sweet potatoes, winter squash, carrots, and pineapples.



## Recipe

### Skillet Mac and Cheese

Makes 4 servings, one serving is 1 cup

#### Ingredients

- 2 cups of water
- 1 1/2 cups of uncooked macaroni
- 1 teaspoon of margarine or butter
- 2 tablespoons of all-purpose flour
- 1/4 teaspoon of salt
- 1/4 teaspoon of dry mustard OR 1  
teaspoon of prepared mustard
- 1 1/4 cups of non-fat or 1% milk
- 1 1/4 cups of grated cheddar cheese  
(5 ounces)



#### Directions

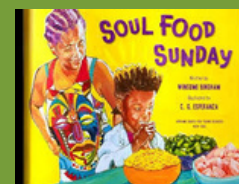
1. Wash your hands with soap and water.
2. In a 10-inch skillet or saucepan, bring water to a boil.
3. Add the macaroni and margarine or butter, stir a few times to prevent sticking.
4. Cover the pan and reduce heat to low, simmer for 5 minutes, do not drain the water.
5. Meanwhile, mix the flour, salt, and mustard in a small bowl. Add 1/4 cup of milk and stir until smooth. Add remaining milk and set aside.
6. Take the lid off the skillet and cook the macaroni until most of the water is gone.
7. Add the milk mixture and cheese while stirring. Cook and stir until the cheese is melted and the sauce is bubbly and thick.
8. Refrigerate leftovers within 2 hours.

Nutrition Facts: Serving Size: 1 cup Calories: 340, total fat: 14g, saturated fat: 7g, 36% calories from fat, sodium 420mg, carbohydrate: 37g, protein: 16g, Calcium: 358mg, Iron: 2mg, Potassium: 240mg  
Source: foodhero.org



#### Kids' Book Nook

With your child, visit your local library and borrow "Soul Food Sunday" by Winsome Bingham. After reading it together, talk about what foods they are excited to try! You can also read along on YouTube by using this link: [https://youtu.be/gZNdKv43BXY?si=1Rg8TH3g6\\_HJ1h6O](https://youtu.be/gZNdKv43BXY?si=1Rg8TH3g6_HJ1h6O)



#### Contact Your Educator

Name: Wendy Alexander  
CCE Chautauqua  
Contact information:  
716-664-9502 ext 221  
wa66@cornell.edu

## Monthly Tips:

Building Healthy Habits BHH



The Chautauqua County Extension Connection (**USPS#101-400**)  
is published monthly by Cornell Cooperative Extension of  
Chautauqua County, JCC Carnahan Center  
525 Falconer Street, PO Box 20  
Jamestown, NY 14702-9608

**Periodical Postage Paid at  
Jamestown, NY 14701.**

*Cornell Cooperative Extension is Chautauqua County's link to Cornell University. Our purpose is to make available to the individuals, families, communities, and businesses of Chautauqua County the resources and research-generated knowledge of Cornell University.*

*By identifying and addressing local needs, Cornell Cooperative Extension provides practical information to help people help themselves and develop their leadership potential. Please feel free to contact Cornell Cooperative Extension for more information.*

*The "Extension Connection" is prepared by the CCE staff and is published monthly by Cornell Cooperative Extension - Chautauqua County. **If you have information for the "Extension Connection" it needs to be in the CCE office by the 10th of each month for the following month's issue.***

*The views expressed in presentations made at CCE meetings or other CCE events are those of the speaker and not, necessarily, of CCE or its Board of Directors. Presentations at CCE events, or the presence of vendors at CCE events, do not constitute an endorsement of the vendor or speaker's views, products or services.*

*With regard to any information presented at any CCE event, CCE does not make any warranty, express or implied, including the warranties of merchantability and fitness for a particular purpose, and specifically disclaims any legal liability or responsibility for the accuracy, completeness, or usefulness of any information, apparatus, product, service or process presented and makes no representation that its use would not infringe upon privately owned or intellectual property rights such as Copyright, Trademark, Trade Dress etc.*

*The presence of a commercial vendor at a CCE event, and the presentation by any vendor of any information regarding any specific commercial products, process, or service by trade name, trademark, manufacturer, or otherwise, does not constitute or imply CCE's endorsement, recommendation, or favoring of such item or organization.*

*Any such material presented by any vendor in any format, without limitation, is for informational purposes only. Any potential customer of any vendor, who is present at a CCE event, is expected to conduct their own due diligence and assessment of the vendor, product, or services as appropriate for their needs.*

*The information herein is supplied with the understanding that no discrimination is intended and no endorsement by Cornell Cooperative Extension is implied. Please contact the Cornell Cooperative Extension - Chautauqua County office if you have any special needs. Cornell Cooperative Extension of Chautauqua County is an Equal Opportunity Program and Employer.*