

Cornell Cooperative Extension of Chautauqua County's

Extension Connection



Cornell Cooperative Extension
Chautauqua County

May 2025
Volume 10 - Issue 5

IN THIS ISSUE

Board and Association News	3
Agriculture	4-11
4-H/Youth Development	12-16
Master Gardener	17
EFNEP ~ Building Healthy Habits (Expanded Food and Nutrition Education Program)	18-19

COVER: Happy Spring! Photo by Katelyn Walley-Stoll.

Your picture could be on our next cover!

Send your submission to lpc33@cornell.edu

The Chautauqua County Extension Connection (USPS #101-400)

The Chautauqua County Extension Connection (USPS#101-400) is published monthly by Cornell Cooperative Extension of Chautauqua County. Subscription included in minimum of \$65 Program Participation fee. Periodical Postage Paid at Jamestown, NY 14701. "POSTMASTER: Send address changes to the: Chautauqua County Extension Connection at 525 Falconer St. JCC Carnahan Center, PO Box 20 Jamestown, NY 14702-0020."

Cornell Cooperative Extension of Chautauqua County Staff Contact Information

Emily Reynolds, CCE Executive Director
eck47@cornell.edu
716-664-9502 ext. 201

Katelyn Walley-Stoll, Agriculture Team Leader
kaw249@cornell.edu
716-664-9502 ext. 202

Darcy Cramer, Finance Associate
dlc284@cornell.edu
716-664-9502 ext. 208

Lucia Conti, Association Administrative Assistant
lpc33@cornell.edu
716-664-9502 ext. 209

Lynne Wahlstrom, 4-H Youth Educator
lmw264@cornell.edu
716-664-9502 ext. 212

Josie Laurie, 4-H Development Educator
jla298@cornell.edu
716-664-9502 ext. 216

Lisette Cabrera, 4-H Program Coordinator
lmc323@cornell.edu
716-664-9502 ext. 214

Melissa Watkins, Agriculture Educator
mew235@cornell.edu
716-664-9502 ext. 203

Molly Harvey, SNAP Ed Nutrition Educator
mmh273@cornell.edu
716-664-9502 ext. 208

Mary Ryder, SNAP Ed Nutrition Educator
mer262@cornell.edu
716-664-9502 ext. 217

Wendy Alexander, EFNEP Nutrition Educator
wa666@cornell.edu
716-664-9502 ext. 221

Linnea Haskin, New York Food for New York Families
lmc373@cornell.edu
716-664-9502 ext. 210

SWNY Dairy, Livestock, and Field Crops Program
CCE Chautauqua, @JCC Carnahan Center
Jamestown, NY 14702
716-640-0522
kaw249@cornell.edu

Lake Erie Regional Grape Program
6592 W. Main Road
Portland, New York 14769
716-792-2800

Cornell Vegetable Program
480 North Main Street
Canandaigua, NY 14424
585-394-3977 ext. 426

CCE - Chautauqua County
@ JCC Carnahan Center
525 Falconer St. PO Box 20
Jamestown, NY 14702-0020
Phone: 716-664-9502 Fax: 716-664-6327
www.cce.cornell.edu/chautauqua

Association News

Board of Directors

Randolph (Randy) Henderson - President
Alyssa Porter - Vice President
George Haffenden - Treasurer
Dawn Betts- Secretary
Emma Boutelle
Jessica Brehm
Chad Buck
Suzanne Fassett-Wright
Dinah Hovey
Heather Gregory
Sue Lindsey
Louis Smith
Pat Walker
Fred Johnson, County Legislator
Tom Nelson, County Legislator
Renee Mooneyham, Extension Specialist

Agriculture Program Committee

Derek Yerico, Dunkirk
Katelyn Card-Allen, Jamestown
Virginia (Ginny) Carlberg, Jamestown
Andrew Campbell, Westfield
Shannon Rinow
Melissa Baideme

4-H Program Committee

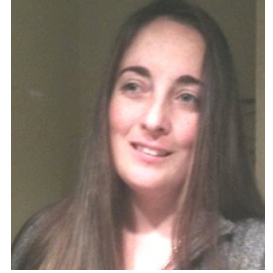
Betty Catanese, Stockton
Laura LeBarron, Silver Creek
Jan Schauman, Jamestown
Keith LaRoy, Kennedy
Lindsay Eckman, Frewsburg
Taylor Young, Panama

4-H Program Advisory Chairpersons

Joyce Edwards	Clothing and Textiles
Bart Nickerson	Dairy
Aaron Carlberg	Goat
Roxanne Young	Dog
David Schauman	Beef, Meat Animal Sale
Kasey Fanara	Horse
Marie Warner	Snack Bar
Jamie Smith	Exhibition Poultry
Melissa Winton	Market Poultry
Kim Chapman	Rabbit
Louis Smith	Hog
Shawn Huntington	Sheep
Cassie Skal	Teen Ambassadors

From the Office of the Executive Director

I am hoping May brings us enough sun and subtle breeze to get the fields prepped, seeds sowed, and animals grazing. Even if you are not a farmer anxiously awaiting to get the spring routine underway, I am sure sunshine and fresh air will be great for all of us. I know that CCE Chautauqua is blossoming this spring with programs. We hope you can find a way to enjoy one of our programming opportunities.



Be sure to check out our website, Facebook page and this publication to see all the upcoming program opportunities. 4-H is rolling along busily towards the much-anticipated County Fair. Nutrition education classes are happening weekly and looking forward to local product availability. L.E.A.F. classes are planned for the next month with lots of opportunities for learning and growing. Speaking of growing, be sure to check out what our Master Gardener Volunteers are planting and teaching through the summer. The helpline is now open for all your gardening questions too! And if you are growing your own garden or enjoy house plants, be sure to visit our plant sale.

As always, if you have program ideas, questions or concerns please reach out. We look forward to seeing you this summer and continuing to enrich the lives of Chautauqua County residents with high quality, low cost, research-based programming.

Chautauqua County Farm Bureau®
is working hard every day to
protect the future of agriculture
and our rural landscape



Join Today!
NYFB.org 800-342-4143



Chautauqua County Agricultural News

CCE-Chautauqua Welcomes Katelyn Walley-Stoll to New Position

CCE-Chautauqua is pleased to welcome Katelyn Walley-Stoll as their new Agriculture Team Leader. Katelyn brings a decade of CCE experience to provide oversight, support, and innovation of agricultural programming in Chautauqua County. She can be reached by calling 716-664-9502 ext. 202 or emailing kaw249@cornell.edu.

CCE Chautauqua has been undergoing an internal capacity study which has led to innovative growth and positive restructuring. This new position will increase capacity and efficiency within CCE Chautauqua while providing outstanding support and guidance to our county's agricultural community.

Walley-Stoll has a lifetime of agricultural experience and grew up on a dairy farm in Eastern, NY. She earned her Bachelor's Degree in Animal Science and Agribusiness Management from Cornell University and her Master's Degree in Adult Learning from SUNY Empire State College. She has worked with Cornell Cooperative Extension since 2014, first as an Agriculture Educator for CCE-Chautauqua, and then as the establishing member of the Southwest New York Dairy, Livestock, and Field

Crops Program, where she was Team Leader and their Farm Business Management Specialist.

CCE Executive Director Emily Reynolds states, "We are so grateful and excited to welcome Katelyn Walley-Stoll back to our organization. Her passion, experience, and dedication to innovation and connection will help us honor a history of agricultural excellence while also meeting the needs of the community for future generations." Reynolds also shared that CCE will continue to post and hire vacant and new positions in both the 4-H Youth Development and Agriculture Programs.



join our team

CCE-Chautauqua's Agriculture Department is currently hiring two positions! One Subject Educator and one Coordinator.

learn more by visiting our website
chautauqua.cce.cornell.edu



Calling all SWNY Sheep and Goat Producers!

Whole Farm Internal Parasite IPM Project

Project Goals:



Understand your farm's internal parasite pressure
Determine which animals are susceptible/resistant
Develop a customized IPM program for your farm
Understand the benefits of an IPM program



To participate in the project you must meet the following criteria:

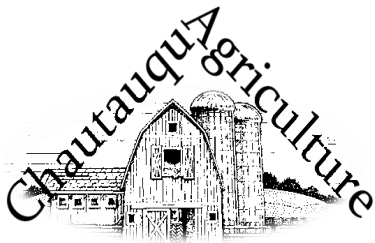
- Produce sheep or goat products as part of your farming enterprise and have at least 20 animals.
- Be located in Allegany, Cattaraugus, Chautauqua, Erie, or Steuben counties.
- Willingness to have every individual in your herd/flock FAMACHA tested, 5-point checked, and have feces collected up to four times in 2025.
- Have the capacity to safely restrain individual animals.
- Each animal must have individual identification.
- Use conventional dewormers, and either currently deworm using a drenching protocol or be open to using a drenching protocol.
- Must not be using copper oxide wire particles.
- Be willing to deworm individual animals based on recommendations from the project team.
- Must be available for 4 hours the week of May 12-16 or May 19-21, and again for May 26-28 or June 2-6. A third recheck will be scheduled for August 2025.

Consultations and testing will be performed by Amy Barkley, Livestock Specialist, and Jess Waltemyer, Cornell's Pro-Livestock Small Ruminant Specialist. For more information, contact Amy Barkley at amb544@cornell.edu or (716) 640-0844.



USDA National Institute of Food and Agriculture
U.S. DEPARTMENT OF AGRICULTURE

*This material is based upon work supported by USDA/NIFA
under Award Number 2024-70027-42540.*



Farmer-Neighbor Committee

Chautauqua Farmer-Neighbor Committee Call for Sponsors

Chautauqua County, New York: The Chautauqua Farmer-Neighbor Committee will host the 8th annual Chautauqua Farmer-Neighbor Dinner on Tuesday August 19, 2025, at The Grandview of Ellington, 1116 West Hill Road, Ellington, NY.

Chautauqua County is rich in agriculture and is home to over 1,275 farms. With such prominence in our County, the tie to farming is something many have come to know and love. Our community is fortunate to enjoy rural landscapes that are preserved by our farming operations, along with access to wholesome, locally produced foods. This event is an opportunity to celebrate our community's farmers that work tirelessly to produce safe, wholesome food for all to consume.

This farm-to-table dinner will showcase a variety of delicious food products. While each year's dinner is different and dependent on the donations provided, it is sure to include a beautiful array of fruits, vegetables, beef, chicken, turkey, pork, maple syrup, and honey, all grown and harvested by Western New York farmers and prepared by 3C's Catering of Kennedy, NY. No farm-to-table dinner would be complete without locally produced beverages, including beer, wine, milk, and grape juice. The event regularly sells out, with over 250 people gathering to celebrate farmers and food.

The Committee is currently seeking Chautauqua County produced products to be included in the dinner, as well as sponsorships for the event. If you are interested in helping to sponsor the program with a monetary donation, local food or beverage donation, no matter the quantity, please contact Cassandra Skal at Farm Credit East, (716) 270-5471, or by email at cassandra.skal@farmcrediteast.com.

A big thank you goes out to our current barn raiser sponsors, Chautauqua County Farm Bureau, an agricultural education, and lobbying group who through policy development and education support local farmers, Chautauqua County Sheriff Quattrone, and Farm Credit East, a financial cooperative providing credit and financial services to farmers and agribusinesses.

Individual dinner tickets are now available for \$20 per person, or \$10 for children ages 12 and under. An Agricultural Advocate table is available for \$175, which includes a full table reserved for 8 diners and your name in the event program. Tickets, including the Agricultural Advocate package, can be purchased by calling Cassandra Skal at Farm Credit East, (716) 270-5471, or by email at cassandra.skal@farmcrediteast.com.

This event is hosted by the Chautauqua Farmer-Neighbor Committee, a collaboration between public and private businesses supporting agriculture and local producers.



Photo Caption: Guests will enjoy a local-foods buffet, visit with agricultural producers to learn more about agriculture in Chautauqua County, and win local products as door prizes.

Game of Logging - Level I & Level II offered in August



Save the Date!

Wednesday, August 20th - Level I

Thursday, August 21st - Level II

8:00am - 4:30pm

Harris Hill State Forest

Gerry, NY

\$150/Level

Chainsaws are important tools, useful for everything from yardwork to cutting firewood to forest management to harvesting timber. They are a feat of engineering, a relatively simple machine made up of a motor, a bar, and a chain that allows anyone the power to take on large tasks. Effectiveness can quickly become dangerous if this machine is not used properly, using appropriate safety measures.

Together with the Chautauqua County Partnership for Economic Growth, the Friends of the Chautauqua County Greenways, and several local trail enthusiast groups, CCE-Chautauqua is hosting the GOL courses in 2025 to increase the volunteer support for the county trail system. So far, attendees for this year's classes include members of the Western NY Mountain Bike Association (WNYMBA), Little Valley Riders Club, and Chautauqua Rails to Trails.

Other chainsaw users, including municipality staff and woodland owners, are also encouraged to attend. The course fee is \$150, which includes a full day of demonstration, training, and personal coaching as each participant gets to put their new knowledge into working in the woods.

Every participant is required to bring their own personal protective equipment, including a hard hat, ear and eye protection, and chainsaw chaps. At the end of the day, participants go home with an official certificate of completion.

For more information, or to register, call Katelyn Walley-Stoll at 716-664-9502 ext. 202 or email kaw249@cornell.edu.



LARRY ROMANCE & SON, INC.

Parts - Sales - Service

Come see us for all your Vineyard - Dairy - Construction & Consumers Needs

SHERIDAN, NY • 2769 ROUTE 20
(716) 679-3366 • tractorsales@netsync.net

ARCADE, NY • 543 W. MAIN ST.
(585) 492-3810

www.larryromanceandson.com

A SMART CHOICE

Choosing the right insurance is about more than just getting the quickest quote. For more than a century, **AMERICAN NATIONAL** has provided reliable service and knowledgeable advice from local agents who take the time to listen and understand your unique needs.



GEORGE HAFFENDEN LUTCF
AGENT

716.386.5393

ghaffenden@American-National.com

PO Box 300 Strykersville, NY 14145

<https://an.insure/georgehaffenden>

Products and services may not be available in all states. Terms, conditions and eligibility requirements will apply. Life insurance and annuity products underwritten by American National Life Insurance Company of New York, Glenmont, New York. Property and casualty products and services may be underwritten by Farm Family Casualty Insurance Company or United Farm Family Insurance Company, both of Glenmont, New York.

License 000000

14-06587136/V4.03.20

Sharing the Road with Farm & Construction Vehicles

What Drivers Should Know:

- This equipment is heavy, making it hard to accelerate, slow down, & stop.
- They often cross the centerline when making a turn.
- They have large blind spots.



Part 1 of 3

SWARM REMOVAL NEED HELP REMOVING A HONEY BEE SWARM?

The beekeepers listed below have indicated that they provide bee removal services. The following contact information is provided as a public service and is not an endorsement of any of the beekeepers listed. AGM does not license or issue permits to remove honey bees. In addition, AGM does not have any information regarding a beekeeper's qualifications or training to remove honey bees.

View the list
agriculture.ny.gov/swarm-catcher-list



**Agriculture
and Markets**

What's Bugging You? Webinars 2025 Schedule

Each month, experts will share practical information and answer questions on using integrated pest management (IPM) to avoid pest problems and promote a healthy environment where you live, work, learn and play. We'll end with an IPM Minute, and cover a specific action you can take in the next few days to help you avoid pest problems.

All webinars are scheduled for 12:00 - 12:30pm on the first Friday of each month.

May 2: Spongy Moth Caterpillar Management– Feeding Friendly Insects: Plan to Prep Your Soil

In NY, spongy moth caterpillars start showing up in May.

You'll learn why there are more caterpillars in some years than in others, and why you should manage them when they are still small. Also, make a plan to spend the summer preparing to plant wildflowers that feed friendly insects

For more information, including how to register, visit

June 6: Spotted lanternfly update | Recognizing wild parsnip

NY Invasive Species Awareness week happens in June, so we're focusing on two invasive species– spotted lanternfly, wild parsnip-and how IPM should be part of your response to them. Get and update on where we are in the SLF cycle and tion steps for this time of year. Learn how to recognize and you should avoid wild parsnip.



ACTUAL SIZE: 1"



To register please go to:

<https://nysipm.cornell.edu/whats-bugging-you/first-friday-events>

If you want to rewatch one of our seminars you can find them in our YouTube playlist at <https://tinyurl.com/4p7k6y4y>



IT PAYS TO BE A CUSTOMER- OWNER.

This year, we paid \$140 million in patronage dividends.

Farm Credit East customer-owners received \$131.6 million in cash patronage dividends based on 2024 earnings, but we didn't stop there. Thanks to outstanding financial results, we were able to distribute an additional one-time special patronage of \$8.4 million to members. We're grateful to continue serving farm, fishing and forestry business owners like you.

No other lender delivers more value than Farm Credit East.

farmcrediteast.com | 800.562.2235



- Loans & Leases
- Financial Record-Keeping
- Payroll Services
- Profitability Consulting
- Tax Preparation & Planning
- Appraisals
- Estate Planning
- Beginning Farmer Programs
- Crop Insurance





Grow Chautauqua Market

DISTRIBUTION OF **FREE** LOCALLY GROWN, RAISED AND PRODUCED FOOD

Distribution Site Location

JAMESTOWN FARMERS MARKET

FRIDAYS:

2:00 PM: ST. LUKE'S EPISCOPAL CHURCH, 410 N. MAIN ST
3 PM: BLACKWELL CHAPEL
610 SPRING STREET

FRIENDSHIP BAPTIST CHURCH

18 EAST SECOND STREET
DUNKIRK, NY 14048

WEDNESDAYS 11 AM
(STARTS APRIL 2)

CHAUTAUQUA COUNTY RURAL MINISTRY

319 WASHINGTON AVE
DUNKIRK, NY 14048

WEDNESDAYS 12:30 PM UNTIL GONE

RIPLEY PUBLIC LIBRARY

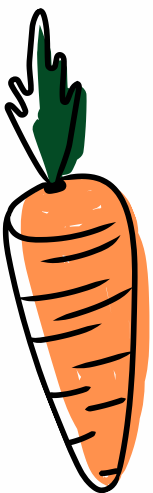
64 W. MAIN STREET
RIPLEY, NY 14775

SATURDAYS 10:30 AM UNTIL GONE

HOW IT WORKS:

- INDIVIDUALS CAN VISIT ANY OF THE GROW CHAUTAUQUA DISTRIBUTION SITES (**1 PER WEEK**) AND RECEIVE A BOX OF LOCALLY GROWN PRODUCTS AT NO COST
- ID, PROOF OF INCOME OR OTHER DOCUMENTATION NOT REQUIRED
- **FIRST COME FIRST SERVE.**
- **DUE TO THE NATURE OF THE PROGRAM, NOT EACH SITE WILL RECEIVE THE SAME PRODUCT EACH WEEK**

STARTS THE WEEK OF MARCH 12



Linnea Haskin, Community
Food System Educator

lmc373@cornell.edu
716-664-9502 ext 210



“It’s a natural fit...”

— John Burket



JOHN BURKET, BURKET FALLS HOLSTEINS

East Freedom, Pa., Milking 110 Reg. Holsteins

93% polled, half Red/RC, Bred over 200 EX

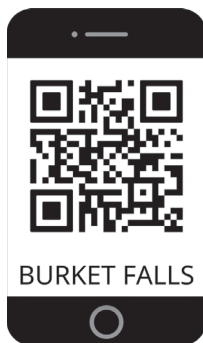
RHA 26,000M with 1100F, SCC 150,000

John has judged state, national, international shows and is president of Holstein Association, USA.

He has also served previously on the RWDCA board.

(Above photo at the farm courtesy Dieter Krieg, Farmshine Editor)

“We have used Udder Comfort™ for 15 years. We use it on any type of swelling or edema. Everyone milking knows if a cow comes through with any swelling in the udder, it’s just automatic. You don’t need told or asked, you apply Udder Comfort, and the vast majority of the time you see results afterwards,” says John Burket, Burket Falls Holsteins, East Freedom, Pennsylvania.



“We use Udder Comfort on our fresh cows, particularly on first-calf heifers. It’s a must. We haven’t tried other products because Udder Comfort has been so successful for us. It’s a natural fit for our herd. Everyone milking here realizes this, uses it, and the results are positive.”

As HAUSA president, John says: “Every day on the dairy farm presents an opportunity. It’s all about the amazing Holstein cow and the people who own and care for her; Best of both worlds.”

UDDER COMFORT™

Quality Udders Make Quality Milk

Her Comfort is Our Passion!

Softer udders ⇒ Faster milking

Better quality ⇒ MORE MILK

1.888.773.7153   

uddercomfort.com

uddercomfort.blog

*Our 27th Year!
Helping reach
their potential
since
1998!*



For external application to the udder only, after milking, as an essential component of udder management. Always wash and dry teats thoroughly before milking.

May 2025



Sunday	Monday	Tuesday	Wednesday	Thursday	Friday	Saturday
				1 Dairy Committee 6:30 PM	2 Rabbit Committee 6:30 PM	3 Clothing Eval. Make-Up 8:30 AM Beef Classic Horse Workday @ 4-H Acres
4	5 Goat Committee 6:30 PM Wants and Needs Meeting 6:00 PM Fairgrounds	6	7 Hog Committee 6:00 PM Exhibition Poultry Committee 6:30 PM Sheep Weigh In 5:30 PM	8 Program Committee	9 Fashion Revue 6:30 PM	10 Horse Practice Evaluations 10:00 AM Goat and Sheep Weigh-In 10:30 AM Fenton Tour 10:00 AM
11	12	13	14 Dog Committee 6:30 PM Horse Committee 6:30 PM Hog Project 6:30 PM	15 Rabbit Project 6:30 PM Organizational Leaders Meeting 6:30 PM	16	17
18 Goat Showmanship Clinic 9:00 AM	19	20	21 Conservation Field Day Dog Project 6:30 PM	22 Conservation Field Day Beef Committee 6:30 PM	23	24
25	26	27	28	29	30	31 Dairy Showmanship Clinic Exhibition Poultry Project

June 2025



Sunday	Monday	Tuesday	Wednesday	Thursday	Friday	Saturday
1	2 Goat Committee 6:30 PM	3 Rabbit Committee 6:30 PM	4 Hog Committee 6:00 PM Exhibition Poultry Committee 6:30 PM	5	6 Rabbit Project 6:30 PM	7
8 Dog Show	9 Goat Project Voucher Meeting 6:30 PM	10	11 Hog Project 6:30 PM Horse Committee 6:30 PM	12 Beef Committee 6:30 PM Dairy Committee 6:30 PM	13	14 Market Poultry Barn Set Up
15 Market Poultry Show	16	17	18	19	20	21 Goat Barn Setup 10:00 AM
22 Dog Show Hog Barn Set Up	23	24	25 Exhibition Poultry Barn Setup & Pullorum Testing	26	27	28
29 Dog Show	30 Goat Committee 6:30 PM					



4-H MEAT ANIMAL SALE PROGRAM POLICY



MISSION STATEMENT: *Training Tomorrow's Leaders Today to raise the best quality animal by teaching the 4-Her decision making, herdsmanhip, ethical behavior, marketing and communication skills while utilizing parents and leaders for guidance.*

1. The only animals sold at fair are raised by a 4-Her as their market animal project. The 4-Her must sell a blue or red ribbon animal of their choice. All animals that go through the sale become the property of the buyer. No animals may be swapped.
2. Only one animal per species may be sold in the Meat Animal Sale unless the 4-Her has both the grand and reserve champion in the same species-they both must sell in the Meat Animal Sale. Market Poultry will be sold as a pen of 2 birds. Market goats will sell by the head. If the 4-H'er brings an animal to the fair as a project market animal, it must be sold provided it meets all the requirements of the program it is in. For 4-H'ers with more than one animal per species, see rule #6.
3. Commissions will be determined by Meat Animal Sale Committee to reflect market, economic and sale expenses. For year 2025, commission on all animals sold in the Meat Animal Sale is 6 percent.
4. Ribbons will be awarded in all market animal classes (beef, sheep, swine, poultry, and goats) by the designated judge for each species. Ribbons will be awarded based on quality and proper finish at the time of the show.

Blue - Excellent: **Red** - Good: **White**- Possible No Sale

⇒ Youth who receive a white ribbon for the meat animal that they may be selling in the Meat Animal Sale will receive a warning for their first offense. The youth and their family will meet with the Meat Animal Sale committee and the respective animal project committee to discuss better methods for raising an animal that is properly finished.

If a youth receives a second white ribbon for an animal of the same species the next consecutive year on the animal that was intended to go through the Meat Animal Sale, they will not be eligible to sell their animal at the Sale.

Example: Jimmy Smith Raises a market hog in the 2023 4-H year. The judge gives Jimmy's hog a white ribbon based on the finish of his hog on show day. Jimmy is allowed to sell his hog this year. Jimmy joins the hog project the next year and again receives a white ribbon. He is not eligible to sell his animal in the meat animal sale but may sell it at the conclusion of the Meat Animal Sale and arrange slaughter and trucking for that animal if necessary. Jimmy tries to raise a hog for the third year and again receives a white ribbon. The cycle begins again, and he may sell his animal in the sale.

5. Youth are encouraged to be present for both their show and sale day. If a youth is not present for show day and/or sale day their animal will be sold at the conclusion of the entire sale. The youth may choose to sell their animal outside of 4-H and arrange their own slaughter and trucking arrangements.
6. Market animals not sold in the Meat Animal Sale are to be released Sunday July 20th at 3 PM. Youth must **make their own slaughter** and trucking arrangements for these animals. ONLY meat animal sale animals will be loaded on Sunday morning going to the respective processor. **No exceptions.**
7. Animals purchased through the Meat Animal Sale and donated back for resale will be sold at the end of that species. **The original buyer must state that they donate the animal back for resale to benefit an animal species, 4-H Meat Animal Sale, 4-H General fund, endowment etc. The resale buyer's money goes to where the original buyer designates. The resale buyer gets the animal.**
8. . The sale order for each species will go as followed: Grand Champion first, Reserve Champion second, and the rest in a lottery system. 4-H Committees must select sale order immediately following their show and submit the sale order to the 4-H Office.
9. All market animals are to be weighed in once for their qualifying weight. See species handbook for qualifying weights on each species. The animals will be sold at this weight.
10. With all 4-H Animal Science Projects, there is an inherent risk involved. Cornell Cooperative Extension, its employees, and volunteers assume no responsibility for any loss or damage. Animals left on premises by the buyer after closing of the barn are done so at the sole risk of the buyer.
11. The possibility exists that health issues or other concerns may arise after the sale and before the slaughter of the animal. If this happens, the buyer(s) are at risk and will have the authority to make decisions regarding the treatment of the animal. The Meat Animal Sale Committee will make every effort to protect the well-being of animals sold through the Meat Animal Sale Auction.
12. Once the gavel falls, the bidder becomes the owner, and the seller becomes the caregiver until the animal leaves the fairgrounds on Sunday following the sale. The buyer is responsible for the trucking of the animal from the fairground as based upon the directions on the sale receipt. The price per pound paid that is above the current market price is considered to be a charitable donation and is tax deductible.
13. Any situation that does not meet above criteria (1-12) must be brought to the attention of Meat Animal Sale Committee and will be dealt with on a case-by- case basis and voted on by secret ballot.

MEAT ANIMAL SALE PARTICIPANTS

If you plan to donate proceeds from the sale of your market animal-you must get a "**Charitable Donation Form**" from your adult barn superintendent at the Fair. **This form must be turned into the 4-H Office prior to the sale-WHEN SALE ORDER IS DRAWN.** You must bring the following information with you to fair to complete form: percent of donation, name of charitable organization, and the complete address of charity. **If form is not completely filled out- the donation will not be deducted from your check-you will be responsible to send it on your own.**

Animal Project News

Sheep Project



Sheep Weigh-In

Fairgrounds
Wednesday, May 7th
5:30 PM
Saturday, May 10th
10:30 AM

All committee meetings at 6pm and project meetings at 7pm unless otherwise noted

Committee Chair: Shawn Huntington
shuntington@randolphcsd.org

Exhibition Poultry Project



Committee Meeting

Wednesday, May 7th
Wednesday, June 4th

Project Meetings

Saturday, May 31st

Barn Setup & Pullorum Testing

Wednesday, June 25th
5:00 PM

**ALL meetings are at 6:30 PM unless otherwise noted*

Committee Chair: Jamie Smith
smith_jamie@mac.com

Beef Project



Committee Meetings

Thursday, May 22nd
Thursday, June 12th

Beef Classic Show

Saturday, May 3rd
Fairgrounds

ALL meetings are at 6:30 unless otherwise noted

Committee Chair: Dave Schauman
chautcobeeffprogram@gmail.com

Hog Project



Committee Meetings

Wednesday, May 7th
Wednesday, June 4th

Project Meetings

Wednesday, May 14th
Wednesday, June 11th

Hog Barn Set Up

Sunday, June 22nd

**All meetings are at 6:30 PM unless otherwise noted.*

Please note: One parent/guardian MUST attend meetings with their 1st and 2nd year members.

Committee Chair: Louis Smith
716-785-1890

Horse Project



Committee Meetings

Wednesday, May 14th
Wednesday, June 11th

Horse Workday @ 4-H Acres

Saturday, May 3rd
Time TBD

Practice Evaluations

Saturday, May 10th @ 4-H Acres
10:00 AM

**ALL meetings are at 6:30 PM unless otherwise noted*

Committee Chair: Kasey Fanara
blondieshort24@yahoo.com

Dairy Project



Committee Meetings

Thursday, May 1st
6:30 pm
Thursday, June 12th
6:30 pm

Dairy Showmanship Clinic

Saturday, May 31
Country Ayre Farms

Dairy Judging

May dates TBA

Committee Chair: Bart Nickerson
bjnick@windstream.net

Goat Project



Committee Meetings

Monday, May 5th
Monday, June 2nd
Monday, June 30th

Goat Weigh-In

Fairgrounds
Saturday, May 10th
10:30 AM

Goat Showmanship Clinic

Sunday, May 18th
4-H Acres
9:00 am - Noon

Project Voucher Meeting

Monday, June 9th

Barn Setup

Saturday, June 21st
10:00 AM

ALL meetings are at 6:30 PM unless otherwise noted
Watch our Facebook page!

Committee Chair: Aaron Carlberg
216-408-9892

Rabbit Project



Committee Meetings

Friday, May 2nd
Tuesday, June 3rd

Project Meetings

Thursday, May 15th
Friday, June 6th

ALL meetings at 6:30 unless otherwise noted

Committee Chair: Kim Chapman
kchapman4574@gmail.com

Dog Project



Committee Meetings

Wednesday, May 14th

Project Meetings

Wednesday, May 21st

Dog Shows @ 4-H Acres

Sunday, June 8th
Sunday, June 22th
Sunday, June 29th

All Project and Committee Meetings at 6:30 PM

Committee Chair: Roxanne Young
roxy6825@windstream.net

Any changes will be posted on Remind

Market Poultry Project



Barn Set Up

Saturday, June 14th

Market Poultry Show

Sunday, June 15th

Committee Chair: Melissa Winton
Melissa_deck@yahoo.com



4-H Fashion Revue

Fashion Revue will be held on Friday,
May 9, 2025 at JCC Carnahan Center at
6:30pm.

*For more information, contact Debbie Caruso at:
debbiecaruso99@gmail.com*



4-H Wants and Need Meeting

Monday, May 5th, 2025 6:00PM @
Chautauqua Co. Fairgrounds.

This is the meeting that you should attend if your
committee has anything you want or need during the
Fair.

Save the date for the Chautauqua County Beef Classic!

May 3, 2025

Chautauqua County Fairgrounds

Sponsorship forms are out now.

If you have any questions or would like to sponsor
the show, contact Julie Covert at (716) 499-9173 or
jcoverts@windstream.net

LEAF JR—Seed Creatures

May 1st 6:30pm at JCC

\$15 for non-4-H member \$10 4-H member

Pre-register at <https://bit.ly/25LeafJRSpring>

Learn about our native plants and how we can help them
grow. You will leave with clay creatures embedded with
seeds you can "plant" to help bring wildflowers to your favor-
ite spaces!

SHOWMANSHIP CLINIC

Epic goat show prep! Learn the secrets to winning to totally rock the fair!

When? Sunday, May 18th, 2025

Time? 2 PM TO 6 PM

This is an opportunity to gain "Meeting Points" if you are in need of them.

If you stay from 2 PM to 4 PM, you receive 1 Meeting Point.

If you stay from 2 PM to 6 PM, you receive 2 Meeting Points.

If you are not able to attend, then we will still offer the Tuesday Showmanship

Clinic at Fair for a short refresher.

**Where? Goat Barn at Chautauqua County
Fairgrounds**

What to Bring?

- Bring your show clothes (Dairy whites, Western) to change into after the clipping demo and before the showing demo
- Bringing a goat is NOT mandatory. We will have goats available to practice clipping and showing with, but you are welcome to bring your own. If bringing goats, please know that pens will not be set up so your goats will need to be kept in your trailers or car.
- Bring hair clippers. Some large goat stands will be available but feel welcome to bring your own if you plan on practicing clipping for show.

4-H Organizational Leaders Meeting

Thursday, May 15, 2025 at

JCC Carnahan Center at 6:30pm.

Lone Member Parents are welcome

*Club leaders or a representative from your club are required
to attend this meeting. Please make arrangements to be sure
someone is in attendance.*

Junior Superintendent Applications

Now Available

Deadline May 15th

Are you interested in becoming a Jr. Superinten-
dent at the 2025 Chautauqua County Fair? A Jr. Sup.
will assist in supervising exhibits, setting up barns
and booths, working with younger exhibitors, and
more! Some Jr. Sup's stay overnight in barns. One
benefit of being a Jr. Sup is a weekly fair pass.

Snack Bar Jr. Superintendents receive up to \$75 for
the week to cover travel expenses. Snack Bar Jr.
Sups are required to work a minimum of 5 hours
per day during the fair.

A completed application consists of a Jr.
Superintendent Application, a brief letter of intent,
and brief 4-H resume. Applications can be found
online at [https://chautauqua.cce.cornell.edu/
resources/4-h-jr-superintendent-application](https://chautauqua.cce.cornell.edu/resources/4-h-jr-superintendent-application) or by
contacting the 4-H Office. If you need assistance
creating a cover letter or resume, please contact
the 4-H Office at 664-9502 ext. 214.

Committees Looking for Members

Most of our livestock committees are
looking for new members, especially
Market Poultry and Snack Bar.



Livestock committees especially need those who
are willing to be hands-on helping lead our project
workshops.

If you are curious about or have questions about
serving on a committee, please email at:
chautauqua4h@cornell.edu to let us know!



SNACK BAR NEWS



It's getting to be that time again! We are gearing up for one of the largest fundraisers of the year to help support 4-H. Last year the Snack Bar made approximately \$11,000 within 6 days at the 2024 Chautauqua County Fair! We thank you for the support we received from our customers and all of our volunteers that helped make this happen. This year we are hoping to be able to extend our hours into the evening and increase the profit made. We are looking for help to make this happen!

- * We are looking for **two paid managers**, each for approximately 40 hours for the week. Could you help? **Do you know someone that could help...**friend, relative, neighbor? **Please spread the word and share with anyone that may be able to help! Contact Marie Warner at 716-450-3779 or marie.warner85@gmail.com.**
- * We are reaching out to outside sources for volunteers. Some employers, such as Wegmans and Cummins, have a **program for employees to participate in volunteer activities**. Do you know of any...please let us know by emailing Lisette, lm323@cornell.edu
- * **Adult and youth volunteers are needed.** Please consider volunteering for at least one shift throughout the week. Youth age 10 and under will need to have an adult with them. We are working on setting up a program so you can **sign up online for shifts in advance**. Stay tuned for additional details. **Contact Marie Warner at 716-450-3779 or marie.warner85@gmail.com with any questions.**
- * We are actively seeking **Snack Bar Jr. Superintendents!** Snack Bar Jr. Superintendents will receive a \$75 stipend, ride pass, t-shirt and hat. If you are a Chautauqua County 4-H member and are 12 or older, please consider applying. Send a **brief cover letter, resume and Jr. Superintendent application** (available online at <https://chautauqua.cce.cornell.edu/resources/4-h-jr-superintendent-application>) and send to lm323@cornell.edu
- * Are you interested in joining the **Snack Bar committee**. We would be happy to hear from you!! Call **716-664-9502, ext. 214** or email lm323@cornell.edu
- * A new **Facebook** page has been established..... **"Chautauqua County 4-H Alumni"**. Please spread the word and share with any alumni you may know.

Thank you for any help that you can offer!! See you at the Fair!!

2025 Chautauqua County Fair

Vouchers Due: Thursday, June 12, 2025

Evaluation Day:

Including Food and Horticulture

Tuesday, July 8, 2025

5:00pm-8:00pm

Chautauqua County Fair:

July 14-20, 2025

2025 Theme:





Master Gardener Plant Sale

Saturday, May 17, 2025

10:00am-1:00pm

Rain or Shine

Cash or Check Only

at the JCC Science Center

525 Falconer Street

Jamestown, NY 14701

GPS address: 241 James Ave

**Perennials, Annuals, Native Plants,
Vegetables & Herbs**

Gently used Gardening Books & Equipment!

Free soil pH testing

(Just drop off your soil sample in a small plastic baggie. We will test while you shop!)

For more information call the CCE
Office at (716) 664-9502





Spring Quick Tips

May 2025

Cornell
Cooperative
Extension



► Let's Start Planting!

April is the first full month of Spring! The days are longer and warmer, and trees, grass, and other plants are coming back to life. With the rising cost of food, consider growing some of your favorite vegetables in containers - no yard needed. To get started, find a plastic container like a pot, bucket, or other large container and make small holes in the bottom for drainage. Fill your container with potting soil - not garden soil or soil from your yard. Potting soil will hold water and drain well in a container. You can use your SNAP card to buy vegetable seeds or plants for your container. Often, you can find vegetable seeds at dollar type stores or your public library. Many public libraries now have seed libraries stocked by Master Gardner volunteers from local Cornell Cooperative Extension offices. Vegetables usually need at least 6 hours of sunlight. Make sure to read your seed packet or the tag that comes with your vegetable plants to learn what each type needs.



► National Stop Food Waste Day



The last Wednesday of April is National Stop Food Waste Day. This day raises awareness of food waste and encourages people to reduce it. Why is this day important? Across the world, it is estimated that the equivalent of 1 billion meals of edible food is being thrown away by households every single day. This food wasted could provide 1.3 meals to people impacted by hunger, every day!

Tips to reduce food waste are to make homemade veggie broth by boiling vegetable and herb scraps or make homemade croutons by coating bread ends in olive oil and seasoning with garlic powder, onion powder, and Italian seasoning.



Building Healthy Habits Recipe

Salsa Chicken

Makes 6 cups, one serving is 1/2 cup

Ingredients:

- 2 pounds boneless, skinless chicken (try a mix of dark and light pieces)
- 2 cups of salsa (any type - red or green)



Directions:

1. Wash your hands with soap and water.
2. Place chicken in a slow cooker. Pour salsa over chicken and stir until pieces are coated.
3. Place lid on slow cooker and cook on HIGH for 4 hours or on LOW for 6-8 hours. When ready, the chicken will fall apart easily.
4. Shred the chicken with 2 forks while in the slow cooker. Stir until mixed well.
5. Serve right away, refrigerate for up to 4 days or freeze for up to 6 months.

Nutrition Facts: Serving Size: ½ cup Calories: 110, total fat: 3.5g, saturated fat: 1g, sodium 130mg, carbohydrate: 3g, added sugar: 0g protein: 16g, Calcium: 8mg, Iron: 1mg, Potassium: 184mg, Vitamin A: 8mcg

Source: foodhero.org



Kids' Book Nook

With your child, visit your local library and borrow "GROW! How We Get Food from Our Garden" by Karl Besckstrand. Read the book together and then talk about what part of the book is your favorite and why. Will you and your family plant a small garden?

For more information contact:

Cornell Cooperative Extension of Chautauqua County

Jamestown Office: Wendy Alexander
(716) 664-9502 Ext. 221
wa66@cornell.edu



The Chautauqua County Extension Connection (**USPS#101-400**)
is published monthly by Cornell Cooperative Extension of
Chautauqua County, JCC Carnahan Center
525 Falconer Street, PO Box 20
Jamestown, NY 14702-9608

**Periodical Postage Paid at
Jamestown, NY 14701.**

Cornell Cooperative Extension is Chautauqua County's link to Cornell University. Our purpose is to make available to the individuals, families, communities, and businesses of Chautauqua County the resources and research-generated knowledge of Cornell University. By identifying and addressing local needs, Cornell Cooperative Extension provides practical information to help people help themselves and develop their leadership potential. Please feel free to contact Cornell Cooperative Extension for more information.

*The "Extension Connection" is prepared by the CCE staff and is published monthly by Cornell Cooperative Extension - Chautauqua County. **If you have information for the "Extension Connection" it needs to be in the CCE office by the 10th of each month for the following month's issue.***

The views expressed in presentations made at CCE meetings or other CCE events are those of the speaker and not, necessarily, of CCE or its Board of Directors. Presentations at CCE events, or the presence of vendors at CCE events, do not constitute an endorsement of the vendor or speaker's views, products or services.

With regard to any information presented at any CCE event, CCE does not make any warranty, express or implied, including the warranties of merchantability and fitness for a particular purpose, and specifically disclaims any legal liability or responsibility for the accuracy, completeness, or usefulness of any information, apparatus, product, service or process presented and makes no representation that its use would not infringe upon privately owned or intellectual property rights such as Copyright, Trademark, Trade Dress etc.

The presence of a commercial vendor at a CCE event, and the presentation by any vendor of any information regarding any specific commercial products, process, or service by trade name, trademark, manufacturer, or otherwise, does not constitute or imply CCE's endorsement, recommendation, or favoring of such item or organization.

Any such material presented by any vendor in any format, without limitation, is for informational purposes only. Any potential customer of any vendor, who is present at a CCE event, is expected to conduct their own due diligence and assessment of the vendor, product, or services as appropriate for their needs.

The information herein is supplied with the understanding that no discrimination is intended and no endorsement by Cornell Cooperative Extension is implied. Please contact the Cornell Cooperative Extension - Chautauqua County office if you have any special needs.